

Datasheet for ABIN7174670
anti-UFSP2 antibody (AA 63-343)



[Go to Product page](#)

3 Images

Overview

Quantity:	100 µg
Target:	UFSP2 (C4orf20)
Binding Specificity:	AA 63-343
Reactivity:	Human
Host:	Rabbit
Clonality:	Polyclonal
Conjugate:	This UFSP2 antibody is un-conjugated
Application:	ELISA, Western Blotting (WB), Immunohistochemistry (IHC), Immunofluorescence (IF)

Product Details

Immunogen:	Recombinant Human Ufm1-specific protease 2 protein (63-343AA)
Isotype:	IgG
Cross-Reactivity:	Human, Mouse
Purification:	>95%, Protein G purified

Target Details

Target:	UFSP2 (C4orf20)
Alternative Name:	UFSP2 (C4orf20 Products)
Background:	Background: Thiol protease which recognizes and hydrolyzes the peptide bond at the C-terminal Gly of UFM1, a ubiquitin-like modifier protein bound to a number of target proteins.

Target Details

Does not hydrolyze SUMO1 or ISG15 ubiquitin-like proteins. Through TRIP4 deufmylation may regulate intracellular nuclear receptors transactivation and thereby regulate cell proliferation and differentiation.

Aliases: C4orf20 antibody, Chromosome 4 open reading frame 20 antibody, FLJ11200 antibody, Ufm1 specific protease 2 antibody, UFM1-specific peptidase 2 antibody, Ufm1-specific protease 2 antibody, UfSP2 antibody, UFSP2_HUMAN antibody

UniProt: [Q9NUQ7](#)

Application Details

Application Notes: Recommended dilution: WB:1:500-1:2000, IHC:1:20-1:200, IF:1:50-1:200,

Restrictions: For Research Use only

Handling

Format: Liquid

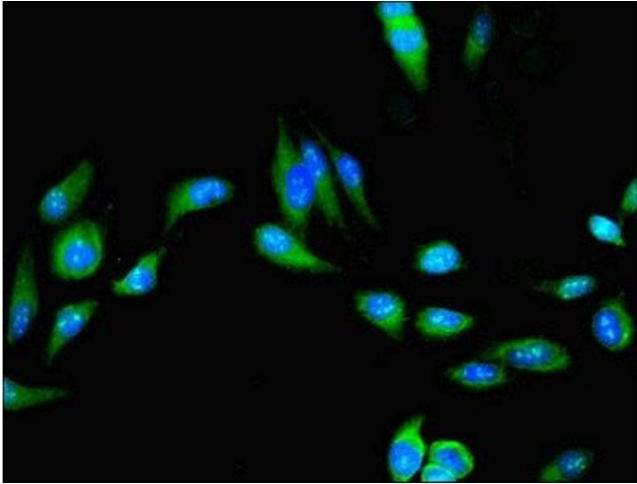
Buffer: Preservative: 0.03 % Proclin 300
Constituents: 50 % Glycerol, 0.01M PBS, PH 7.4

Preservative: ProClin

Precaution of Use: This product contains ProClin: a POISONOUS AND HAZARDOUS SUBSTANCE which should be handled by trained staff only.

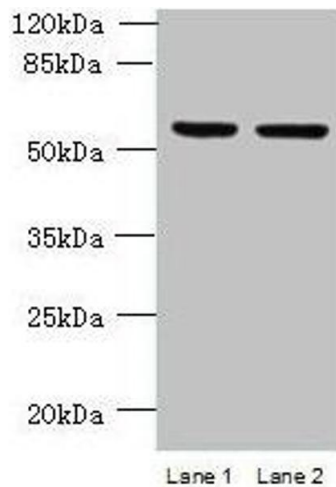
Storage: -20 °C,-80 °C

Storage Comment: Upon receipt, store at -20°C or -80°C. Avoid repeated freeze.



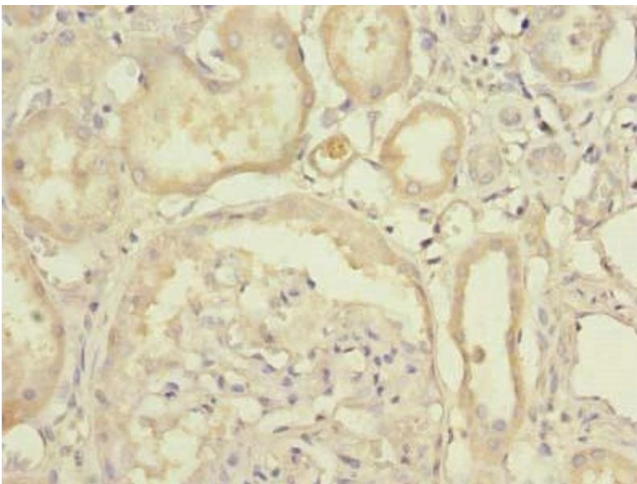
Immunofluorescence

Image 1. Immunofluorescent analysis of HeLa cells using ABIN7174670 at dilution of 1:100 and Alexa Fluor 488-conjugated AffiniPure Goat Anti-Rabbit IgG(H+L)



Western Blotting

Image 2. Western blot All lanes: UFSP2 antibody at 4 μ g/mL
Lane 1: HepG2 whole cell lysate Lane 2: NIH/3T3 whole cell lysate
Secondary Goat polyclonal to rabbit IgG at 1/10000 dilution
Predicted band size: 54 kDa Observed band size: 54 kDa



Immunohistochemistry

Image 3. Immunohistochemistry of paraffin-embedded human kidney tissue using ABIN7174670 at dilution of 1:100