



[Go to Product page](#)

Datasheet for ABIN7174707

## anti-RPAP2 antibody (AA 1-154)

### 3 Images

#### Overview

Quantity:	100 µg
Target:	RPAP2
Binding Specificity:	AA 1-154
Reactivity:	Human
Host:	Rabbit
Clonality:	Polyclonal
Conjugate:	This RPAP2 antibody is un-conjugated
Application:	ELISA, Western Blotting (WB), Immunohistochemistry (IHC)

#### Product Details

Immunogen:	Recombinant Human Uncharacterized protein C10orf82 protein (1-154AA)
Isotype:	IgG
Cross-Reactivity:	Human, Mouse
Purification:	Antigen Affinity Purified

#### Target Details

Target:	RPAP2
Alternative Name:	C1orf82 ( <a href="#">RPAP2 Products</a> )
Background:	C10orf82 antibody, CJ082_HUMAN antibody, FLJ40268 antibody, MGC33547 antibody, Uncharacterized protein C10orf82 antibody

## Target Details

---

UniProt: [Q8WW14](#)

## Application Details

---

Application Notes: Recommended dilution: WB:1:1000-1:5000, IHC:1:20-1:200,

Restrictions: For Research Use only

## Handling

---

Format: Liquid

Buffer: Preservative: 0.03 % Proclin 300  
Constituents: 50 % Glycerol, 0.01M PBS, PH 7.4

Preservative: ProClin

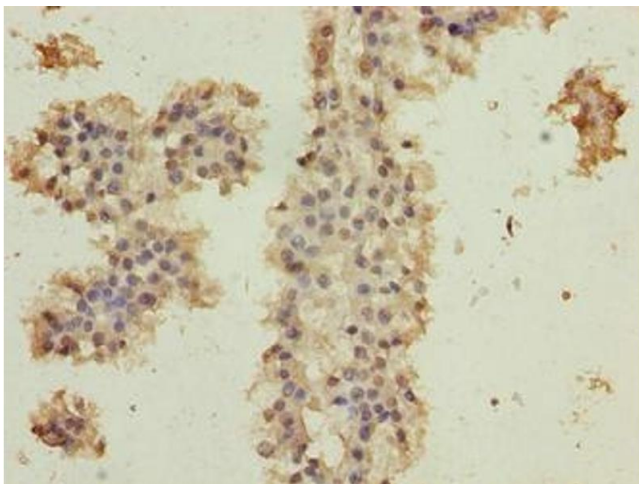
Precaution of Use: This product contains ProClin: a POISONOUS AND HAZARDOUS SUBSTANCE which should be handled by trained staff only.

Storage: -20 °C,-80 °C

Storage Comment: Upon receipt, store at -20°C or -80°C. Avoid repeated freeze.

## Images

---



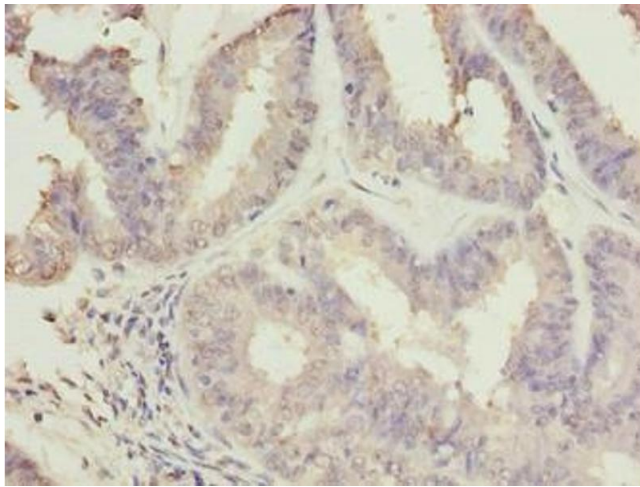
### Immunohistochemistry

**Image 1.** Immunohistochemistry of paraffin-embedded human breast cancer using ABIN7174707 at dilution of 1:100



### Western Blotting

**Image 2.** Western blot All lanes: C10orf82 antibody at 1  $\mu$ g/mL Lane 1: A431 whole cell lysate Lane 2: HepG2 whole cell lysate Lane 3: Mouse thymus tissue Secondary Goat polyclonal to rabbit IgG at 1/10000 dilution Predicted band size: 27, 18, 13 kDa Observed band size: 27 kDa



### Immunohistochemistry

**Image 3.** Immunohistochemistry of paraffin-embedded human endometrial cancer using ABIN7174707 at dilution of 1:100