



[Go to Product page](#)

Datasheet for ABIN7174715
anti-C11orf53 antibody (AA 13-236)

3 Images

Overview

Quantity:	100 µg
Target:	C11orf53
Binding Specificity:	AA 13-236
Reactivity:	Human
Host:	Rabbit
Clonality:	Polyclonal
Conjugate:	This C11orf53 antibody is un-conjugated
Application:	ELISA, Western Blotting (WB), Immunohistochemistry (IHC)

Product Details

Immunogen:	Recombinant Human Uncharacterized protein C11orf53 protein (13-236AA)
Isotype:	IgG
Cross-Reactivity:	Human, Mouse
Purification:	Antigen Affinity Purified

Target Details

Target:	C11orf53
Alternative Name:	C11orf53 (C11orf53 Products)
Background:	C11orf53Uncharacterized protein C11orf53 antibody
UniProt:	Q8IXP5

Application Details

Application Notes: Recommended dilution: WB:1:1000-1:5000, IHC:1:20-1:200,

Restrictions: For Research Use only

Handling

Format: Liquid

Buffer: Preservative: 0.03 % Proclin 300
Constituents: 50 % Glycerol, 0.01M PBS, PH 7.4

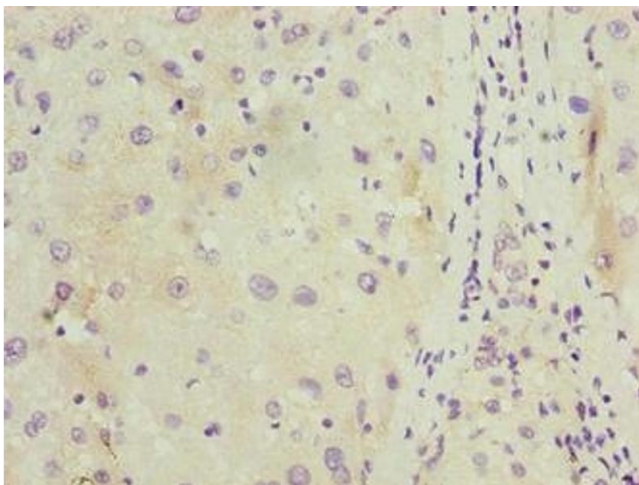
Preservative: ProClin

Precaution of Use: This product contains ProClin: a POISONOUS AND HAZARDOUS SUBSTANCE which should be handled by trained staff only.

Storage: -20 °C,-80 °C

Storage Comment: Upon receipt, store at -20°C or -80°C. Avoid repeated freeze.

Images



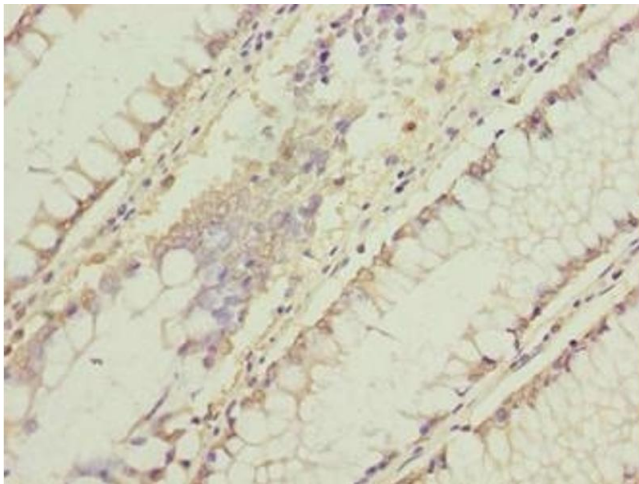
Immunohistochemistry

Image 1. Immunohistochemistry of paraffin-embedded human liver cancer using ABIN7174715 at dilution of 1:100



Western Blotting

Image 2. Western blot All lanes: C11orf53 antibody at 0.8 μ g/mL + Mouse gonadal tissue Secondary Goat polyclonal to rabbit IgG at 1/10000 dilution Predicted band size: 26 kDa Observed band size: 26 kDa



Immunohistochemistry

Image 3. Immunohistochemistry of paraffin-embedded human colon cancer using ABIN7174715 at dilution of 1:100