

Datasheet for ABIN7174864  
**anti-C6orf141 antibody (AA 1-237)**[Go to Product page](#)

## 2 Images

## Overview

Quantity:	100 µg
Target:	C6orf141 (C6ORF141)
Binding Specificity:	AA 1-237
Reactivity:	Human
Host:	Rabbit
Clonality:	Polyclonal
Conjugate:	This C6orf141 antibody is un-conjugated
Application:	ELISA, Immunohistochemistry (IHC)

## Product Details

Immunogen:	Recombinant Human Uncharacterized protein C6orf141 protein (1-237AA)
Isotype:	IgG
Cross-Reactivity:	Human
Purification:	>95%, Protein G purified

## Target Details

Target:	C6orf141 (C6ORF141)
Alternative Name:	C6orf141 ( <a href="#">C6ORF141 Products</a> )
Background:	C6orf141Uncharacterized protein C6orf141 antibody
UniProt:	<a href="#">Q5SZD1</a>

## Application Details

Application Notes: Recommended dilution: IHC:1:20-1:200,

Restrictions: For Research Use only

## Handling

Format: Liquid

Buffer: Preservative: 0.03 % Proclin 300  
Constituents: 50 % Glycerol, 0.01M PBS, PH 7.4

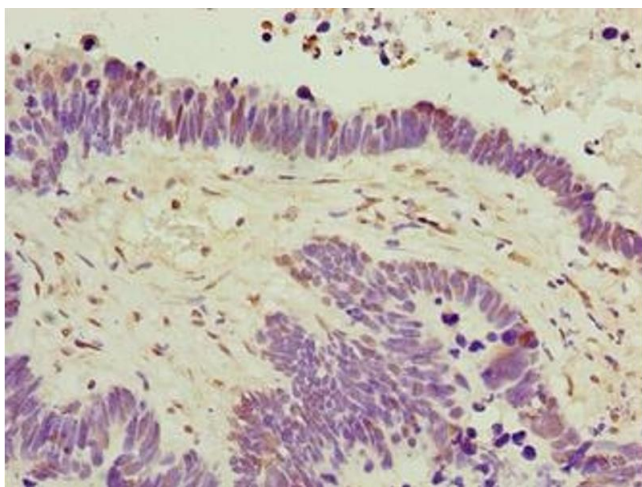
Preservative: ProClin

Precaution of Use: This product contains ProClin: a POISONOUS AND HAZARDOUS SUBSTANCE which should be handled by trained staff only.

Storage: -20 °C,-80 °C

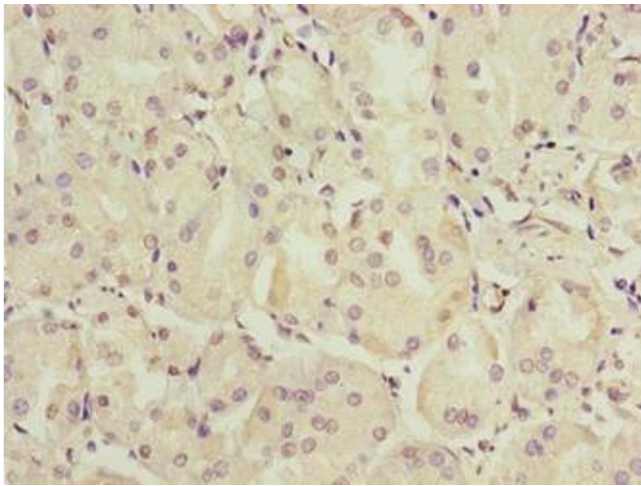
Storage Comment: Upon receipt, store at -20°C or -80°C. Avoid repeated freeze.

## Images



### Immunohistochemistry

**Image 1.** Immunohistochemistry of paraffin-embedded human ovarian cancer using ABIN7174864 at dilution of 1:100



#### Immunohistochemistry

**Image 2.** Immunohistochemistry of paraffin-embedded human gastric cancer using ABIN7174864 at dilution of 1:100