



[Go to Product page](#)

Datasheet for ABIN7174868  
**anti-LY6G6D antibody (AA 11-240)**

1 Image

Overview

Quantity:	100 µg
Target:	LY6G6D
Binding Specificity:	AA 11-240
Reactivity:	Human
Host:	Rabbit
Clonality:	Polyclonal
Conjugate:	This LY6G6D antibody is un-conjugated
Application:	ELISA, Immunohistochemistry (IHC)

Product Details

Immunogen:	Recombinant Human Uncharacterized protein C6orf203 protein (11-240AA)
Isotype:	IgG
Cross-Reactivity:	Human
Purification:	>95%, Protein G purified

Target Details

Target:	LY6G6D
Alternative Name:	C6orf23 ( <a href="#">LY6G6D Products</a> )
Background:	Background: mitochondrion Aliases: MTRES1 antibody, C6orf203 antibody, HSPC230 antibody, Mitochondrial transcription

## Target Details

rescue factor 1 antibody

UniProt: [Q9P0P8](#)

## Application Details

Application Notes: Recommended dilution: IHC:1:20-1:200,

Restrictions: For Research Use only

## Handling

Format: Liquid

Buffer: Preservative: 0.03 % Proclin 300  
Constituents: 50 % Glycerol, 0.01M PBS, PH 7.4

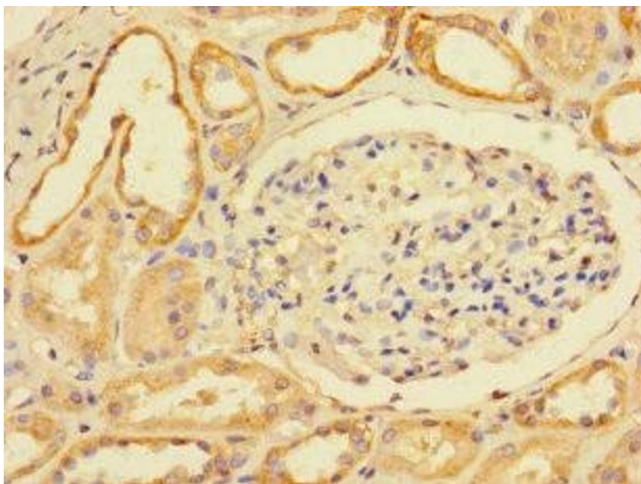
Preservative: ProClin

Precaution of Use: This product contains ProClin: a POISONOUS AND HAZARDOUS SUBSTANCE which should be handled by trained staff only.

Storage: -20 °C,-80 °C

Storage Comment: Upon receipt, store at -20°C or -80°C. Avoid repeated freeze.

## Images



### Immunohistochemistry

**Image 1.** Immunohistochemistry of paraffin-embedded human kidney tissue using ABIN7174868 at dilution of 1:100