

Datasheet for ABIN717491
anti-CENPH antibody (AA 41-140)[Go to Product page](#)

1 Image

Overview

Quantity:	100 µL
Target:	CENPH
Binding Specificity:	AA 41-140
Reactivity:	Human
Host:	Rabbit
Clonality:	Polyclonal
Conjugate:	This CENPH antibody is un-conjugated
Application:	Western Blotting (WB), ELISA, Immunofluorescence (Cultured Cells) (IF (cc)), Immunofluorescence (Paraffin-embedded Sections) (IF (p)), Immunohistochemistry (Paraffin- embedded Sections) (IHC (p)), Immunohistochemistry (Frozen Sections) (IHC (fro))

Product Details

Immunogen:	KLH conjugated synthetic peptide derived from human CENPH
Isotype:	IgG
Cross-Reactivity:	Human
Predicted Reactivity:	Mouse,Rat,Dog,Cow,Sheep,Horse
Purification:	Purified by Protein A.

Target Details

Target:	CENPH
---------	-------

Target Details

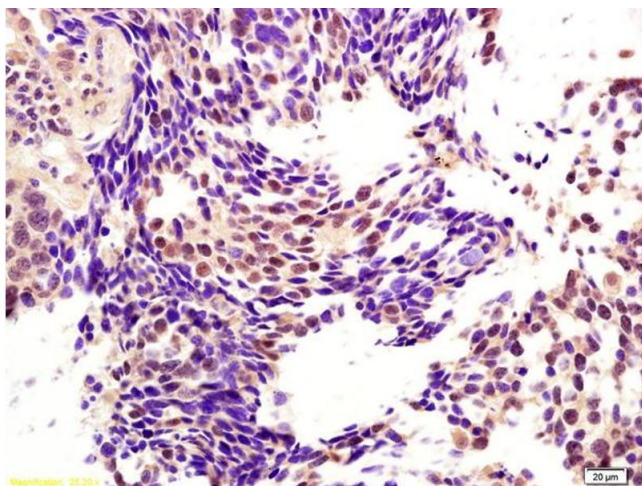
Alternative Name:	CENPH (CENPH Products)
Background:	<p>Synonyms: Centromere protein H, CENP-H, Interphase centromere complex protein 35, CENPH, ICEN35</p> <p>Background: Component of the CENPA-NAC (nucleosome-associated) complex, a complex that plays a central role in assembly of kinetochore proteins, mitotic progression and chromosome segregation. The CENPA-NAC complex recruits the CENPA-CAD (nucleosome distal) complex and may be involved in incorporation of newly synthesized CENPA into centromeres. Required for chromosome congression and efficiently align the chromosomes on a metaphase plate.</p>
Gene ID:	64946
UniProt:	Q9H3R5

Application Details

Application Notes:	WB 1:300-5000 ELISA 1:500-1000 IHC-P 1:200-400 IHC-F 1:100-500 IF(IHC-P) 1:50-200 IF(IHC-F) 1:50-200 IF(ICC) 1:50-200
Restrictions:	For Research Use only

Handling

Format:	Liquid
Concentration:	1 µg/µL
Buffer:	0.01M TBS(pH 7.4) with 1 % BSA, 0.02 % Proclin300 and 50 % Glycerol.
Preservative:	ProClin
Precaution of Use:	This product contains ProClin: a POISONOUS AND HAZARDOUS SUBSTANCE, which should be handled by trained staff only.
Storage:	4 °C, -20 °C
Storage Comment:	Shipped at 4°C. Store at -20°C for one year. Avoid repeated freeze/thaw cycles.
Expiry Date:	12 months



Immunohistochemistry

Image 1. Formalin-fixed and paraffin embedded human lung carcinoma labeled with Anti-CENPH Polyclonal Antibody, Unconjugated (ABIN717491) at 1:200 followed by conjugation to the secondary antibody and DAB staining.