

Datasheet for ABIN7174924  
**anti-CXorf21 antibody (AA 1-301)**



[Go to Product page](#)

1 Image

### Overview

Quantity:	100 µg
Target:	CXorf21
Binding Specificity:	AA 1-301
Reactivity:	Human
Host:	Rabbit
Clonality:	Polyclonal
Conjugate:	This CXorf21 antibody is un-conjugated
Application:	ELISA, Immunohistochemistry (IHC)

### Product Details

Immunogen:	Recombinant Human Uncharacterized protein CXorf21 protein (1-301AA)
Isotype:	IgG
Cross-Reactivity:	Human
Purification:	>95%, Protein G purified

### Target Details

Target:	CXorf21
Alternative Name:	CXorf21 ( <a href="#">CXorf21 Products</a> )
Background:	CXorf21Protein CXorf21 antibody
UniProt:	<a href="#">Q9HAI6</a>

## Application Details

---

Application Notes: Recommended dilution: IHC:1:20-1:200,

Restrictions: For Research Use only

## Handling

---

Format: Liquid

Buffer: Preservative: 0.03 % Proclin 300  
Constituents: 50 % Glycerol, 0.01M PBS, PH 7.4

Preservative: ProClin

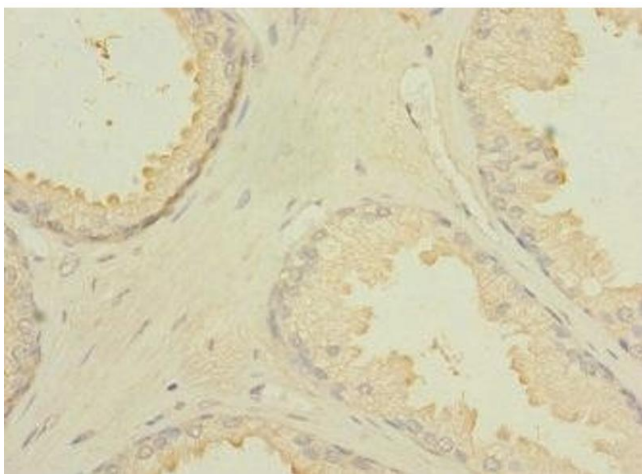
Precaution of Use: This product contains ProClin: a POISONOUS AND HAZARDOUS SUBSTANCE which should be handled by trained staff only.

Storage: -20 °C,-80 °C

Storage Comment: Upon receipt, store at -20°C or -80°C. Avoid repeated freeze.

## Images

---



### Immunohistochemistry

**Image 1.** Immunohistochemistry of paraffin-embedded human prostate cancer using ABIN7174924 at dilution of 1:100