



[Go to Product page](#)

Datasheet for ABIN7175033  
**anti-C16orf62 antibody (AA 6-205)**

2 Images

Overview

Quantity:	100 µg
Target:	C16orf62
Binding Specificity:	AA 6-205
Reactivity:	Human
Host:	Rabbit
Clonality:	Polyclonal
Conjugate:	This C16orf62 antibody is un-conjugated
Application:	ELISA, Western Blotting (WB), Immunofluorescence (IF)

Product Details

Immunogen:	Recombinant Human UPF0505 protein C16orf62 protein (6-205AA)
Isotype:	IgG
Cross-Reactivity:	Human
Purification:	>95%, Protein G purified

Target Details

Target:	C16orf62
Alternative Name:	C16orf62 ( <a href="#">C16orf62 Products</a> )
Background:	Background: Involved in copper-dependent ATP7A trafficking between the trans-Golgi network and vesicles in the cell periphery, the function is proposed to depend on its association within

## Target Details

---

the CCC complex and cooperation with the WASH complex on early endosomes. Seems not to be required for CCC complex stability (PubMed:25355947).

Aliases: C16orf62 antibody, Chromosome 16 open reading frame 62 antibody, CP062\_HUMAN antibody, DKFZp313M0539 antibody, DKFZp434B0212 antibody, Esophageal cancer associated protein antibody, Esophageal cancer-associated protein antibody, FLJ21040, antibody, Hypothetical protein LOC57020 antibody, MGC16824 antibody, UPF0505 protein C16orf62 antibody

---

UniProt: [Q7Z3J2](#)

## Application Details

---

Application Notes: Recommended dilution: WB:1:500-1:5000, IF:1:50-1:200,

Restrictions: For Research Use only

## Handling

---

Format: Liquid

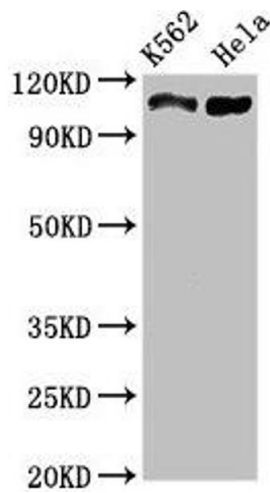
Buffer: Preservative: 0.03 % Proclin 300  
Constituents: 50 % Glycerol, 0.01M PBS, pH 7.4

Preservative: ProClin

Precaution of Use: This product contains ProClin: a POISONOUS AND HAZARDOUS SUBSTANCE which should be handled by trained staff only.

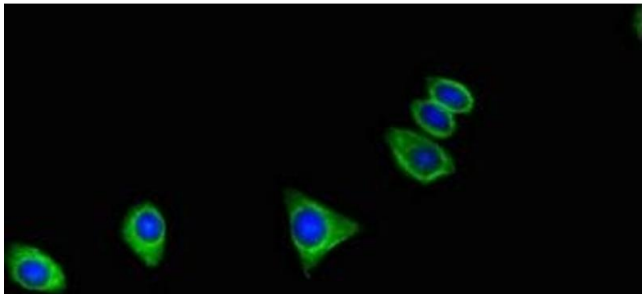
Storage: -20 °C,-80 °C

Storage Comment: Upon receipt, store at -20°C or -80°C. Avoid repeated freeze.



### Western Blotting

**Image 1.** Western Blot Positive WB detected in: K562 whole cell lysate, HeLa whole cell lysate All lanes: C16orf62 antibody at 3 µg/mL Secondary Goat polyclonal to rabbit IgG at 1/50000 dilution Predicted band size: 110, 94 kDa Observed band size: 110 kDa



### Immunofluorescence

**Image 2.** Immunofluorescent analysis of HepG2 cells using ABIN7175033 at dilution of 1:100 and Alexa Fluor 488-conjugated AffiniPure Goat Anti-Rabbit IgG(H+L)