

Datasheet for ABIN7175069  
**anti-C2orf27A antibody (AA 3-174)**



[Go to Product page](#)

4 Images

### Overview

Quantity:	100 µg
Target:	C2orf27A
Binding Specificity:	AA 3-174
Reactivity:	Human
Host:	Rabbit
Clonality:	Polyclonal
Conjugate:	This C2orf27A antibody is un-conjugated
Application:	ELISA, Western Blotting (WB), Immunohistochemistry (IHC)

### Product Details

Immunogen:	Recombinant Human UPF0687 protein C20orf27 protein (3-174AA)
Isotype:	IgG
Cross-Reactivity:	Human
Purification:	>95%, Protein G purified

### Target Details

Target:	C2orf27A
Alternative Name:	C2orf27 ( <a href="#">C2orf27A Products</a> )
Background:	C20orf27UPF0687 protein C20orf27 antibody
UniProt:	<a href="#">Q9GZN8</a>

## Application Details

---

Application Notes: Recommended dilution: WB:1:500-1:2000, IHC:1:20-1:200,

Restrictions: For Research Use only

## Handling

---

Format: Liquid

Buffer: Preservative: 0.03 % Proclin 300  
Constituents: 50 % Glycerol, 0.01M PBS, PH 7.4

Preservative: ProClin

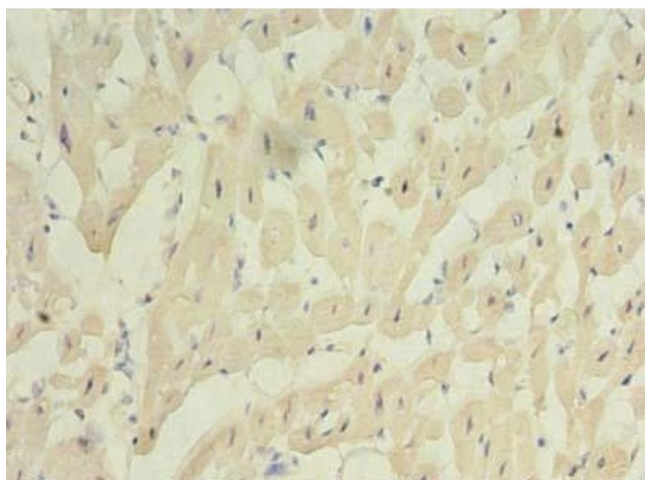
Precaution of Use: This product contains ProClin: a POISONOUS AND HAZARDOUS SUBSTANCE which should be handled by trained staff only.

Storage: -20 °C,-80 °C

Storage Comment: Upon receipt, store at -20°C or -80°C. Avoid repeated freeze.

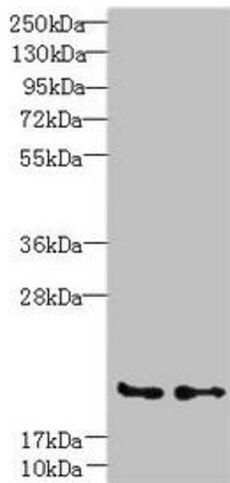
## Images

---



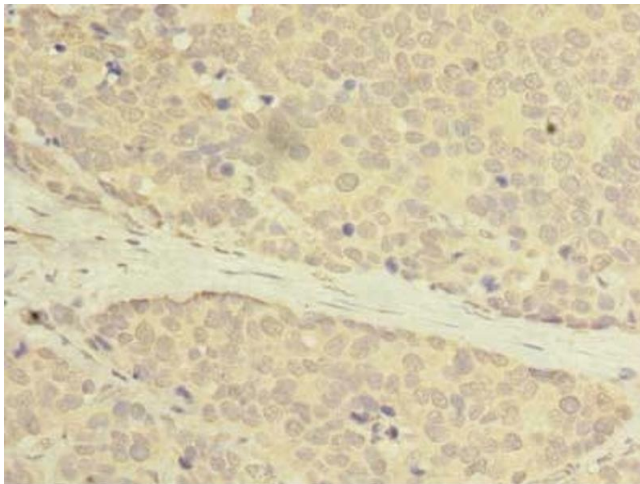
### Immunohistochemistry

**Image 1.** Immunohistochemistry of paraffin-embedded human heart tissue using ABIN7175069 at dilution of 1:100



### Western Blotting

**Image 2.** Western blot All lanes: C20orf27 antibody at 6  $\mu$ g/mL Lane 1: HCT116 whole cell lysate Lane 2: MDA-MB-231 whole cell lysate Secondary Goat polyclonal to rabbit IgG at 1/10000 dilution Predicted band size: 20, 22 kDa Observed band size: 20 kDa



### Immunohistochemistry

**Image 3.** Immunohistochemistry of paraffin-embedded human gastric cancer using ABIN7175069 at dilution of 1:100

Please check the [product details page](#) for more images. Overall 4 images are available for ABIN7175069.