



[Go to Product page](#)

Datasheet for ABIN7175073

anti-C11orf68 antibody (AA 1-251)

2 Images

Overview

Quantity:	100 µg
Target:	C11orf68
Binding Specificity:	AA 1-251
Reactivity:	Human
Host:	Rabbit
Clonality:	Polyclonal
Conjugate:	This C11orf68 antibody is un-conjugated
Application:	ELISA, Western Blotting (WB), Immunohistochemistry (IHC)

Product Details

Immunogen:	Recombinant Human UPF0696 protein C11orf68 protein (1-251AA)
Isotype:	IgG
Cross-Reactivity:	Human, Mouse
Purification:	>95%, Protein G purified

Target Details

Target:	C11orf68
Alternative Name:	C11orf68 (C11orf68 Products)
Background:	Background: poly(A) RNA binding Aliases: Basophilic leukemia expressed protein Bles03 antibody, Basophilic leukemia-expressed

Target Details

protein Bles03 antibody, BLES03 antibody, C11orf68 antibody, Chromosome 11 open reading frame 68 antibody, CK068_HUMAN antibody, NON antibody, Protein p5326 antibody, UPF0696 protein C11orf68 antibody

UniProt: [Q9H3H3](#)

Application Details

Application Notes: Recommended dilution: WB:1:500-1:2000, IHC:1:20-1:200,

Restrictions: For Research Use only

Handling

Format: Liquid

Buffer: Preservative: 0.03 % Proclin 300
Constituents: 50 % Glycerol, 0.01M PBS, PH 7.4

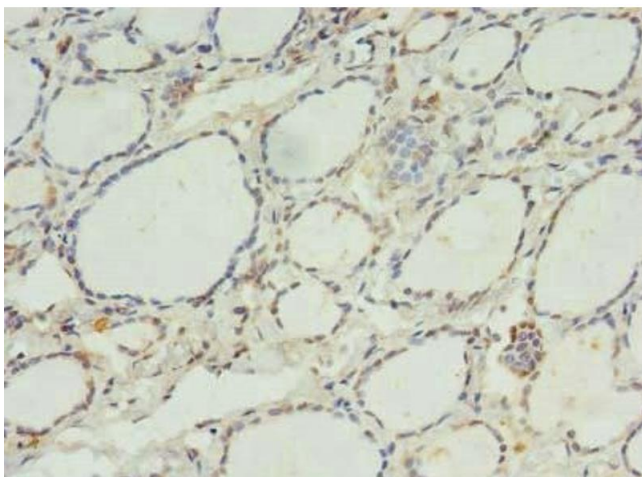
Preservative: ProClin

Precaution of Use: This product contains ProClin: a POISONOUS AND HAZARDOUS SUBSTANCE which should be handled by trained staff only.

Storage: -20 °C,-80 °C

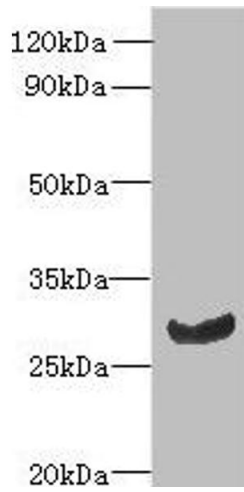
Storage Comment: Upon receipt, store at -20°C or -80°C. Avoid repeated freeze.

Images



Immunohistochemistry

Image 1. Immunohistochemistry of paraffin-embedded human thyroid tissue using ABIN7175073 at dilution of 1:100



Western Blotting

Image 2. Western blot All lanes: C11orf68 antibody at 3 μ g/mL + Mouse liver tissue Secondary Goat polyclonal to rabbit IgG at 1/10000 dilution Predicted band size: 28, 32 kDa Observed band size: 28 kDa