



[Go to Product page](#)

Datasheet for ABIN7175288
anti-VPS26A antibody (AA 21-180)

2 Images

Overview

Quantity:	100 µL
Target:	VPS26A
Binding Specificity:	AA 21-180
Reactivity:	Human
Host:	Rabbit
Clonality:	Polyclonal
Conjugate:	This VPS26A antibody is un-conjugated
Application:	ELISA, Immunohistochemistry (IHC)

Product Details

Immunogen:	Recombinant Human Vacuolar protein sorting-associated protein 26A protein (21-180AA)
Isotype:	IgG
Cross-Reactivity:	Human
Purification:	>95%, Protein G purified

Target Details

Target:	VPS26A
Alternative Name:	VPS26A (VPS26A Products)
Background:	Background: Acts as component of the retromer cargo-selective complex (CSC). The CSC is believed to be the core functional component of retromer or respective retromer complex

Target Details

variants acting to prevent missorting of selected transmembrane cargo proteins into the lysosomal degradation pathway. The recruitment of the CSC to the endosomal membrane involves RAB7A and SNX3. The SNX-BAR retromer mediates retrograde transport of cargo proteins from endosomes to the trans-Golgi network (TGN) and is involved in endosome-to-plasma membrane transport for cargo protein recycling. The SNX3-retromer mediates the retrograde endosome-to-TGN transport of WLS distinct from the SNX-BAR retromer pathway. The SNX27-retromer is believed to be involved in endosome-to-plasma membrane trafficking and recycling of a broad spectrum of cargo proteins (Probable). The CSC seems to act as recruitment hub for other proteins, such as the WASH complex and TBC1D5 (Probable). Required for retrograde transport of lysosomal enzyme receptor IGF2R (PubMed:15078902, PubMed:15078903). Required to regulate transcytosis of the polymeric immunoglobulin receptor (pIgR-pIgA) (PubMed:15247922). Required for the endosomal localization of WASHC2A (indicative for the WASH complex) (PubMed:22070227). Required for the endosomal localization of TBC1D5 (PubMed:20923837). Mediates retromer cargo recognition of SORL1 and is involved in trafficking of SORL1 implicated in sorting and processing of APP (PubMed:22279231). Involved in retromer-independent lysosomal sorting of F2R (PubMed:16407403). Involved in recycling of ADRB2 (PubMed:21602791). Enhances the affinity of SNX27 for PDZ-binding motifs in cargo proteins (By similarity).

Aliases: FLJ12930 antibody, HB 58 antibody, HB58 antibody, Hbeta 58 antibody, Hbeta 58 homolog antibody, Hbeta58 antibody, Hbeta58 homolog antibody, hVPS 26 antibody, hVPS26 antibody, MGC94168 antibody, PEP 8A antibody, PEP8A antibody, Vacuolar protein sorting 26 A antibody, Vacuolar protein sorting 26 antibody, Vacuolar protein sorting 26 homolog A antibody, Vacuolar protein sorting 26 homolog A S. pombe antibody, Vacuolar protein sorting 26 homolog A yeast antibody, Vacuolar protein sorting 26 yeast antibody, Vacuolar protein sorting 26 yeast homolog antibody, Vacuolar protein sorting 26A antibody, Vacuolar protein sorting associated protein 26A antibody, Vacuolar protein sorting-associated protein 26A antibody, Vesicle protein sorting 26 antibody, Vesicle protein sorting 26A antibody, VP26A_HUMAN antibody, VPS 26 antibody, VPS 26A antibody, VPS26A antibody

UniProt: [075436](#)

Application Details

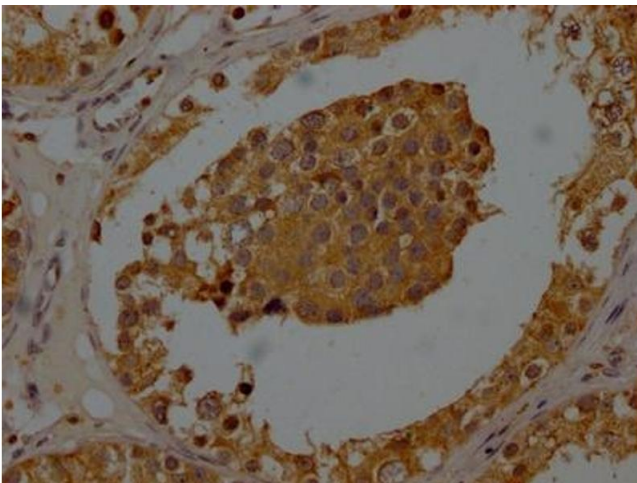
Application Notes: Recommended dilution: IHC:1:200-1:500,

Restrictions: For Research Use only

Handling

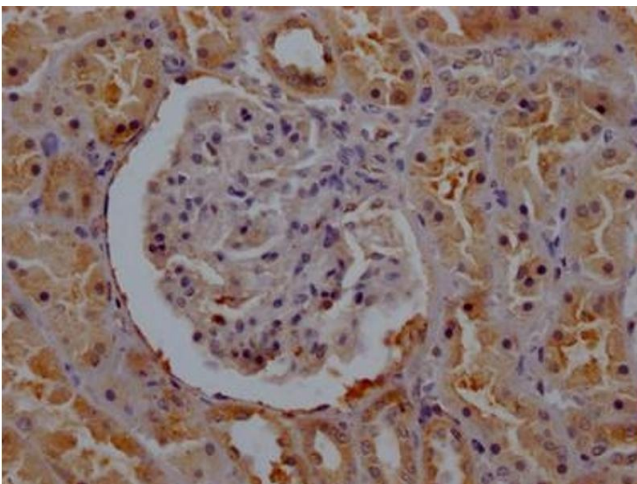
Format:	Liquid
Buffer:	Preservative: 0.03 % Proclin 300 Constituents: 50 % Glycerol, 0.01M PBS, PH 7.4
Preservative:	ProClin
Precaution of Use:	This product contains ProClin: a POISONOUS AND HAZARDOUS SUBSTANCE which should be handled by trained staff only.
Storage:	-20 °C,-80 °C
Storage Comment:	Upon receipt, store at -20°C or -80°C. Avoid repeated freeze.

Images



Immunohistochemistry

Image 1. IHC image of ABIN7175288 diluted at 1:200 and staining in paraffin-embedded human testis tissue performed on a Leica Bond™ system. After dewaxing and hydration, antigen retrieval was mediated by high pressure in a citrate buffer (pH 6.0). Section was blocked with 10 % normal goat serum 30 min at RT. Then primary antibody (1 % BSA) was incubated at 4 °C overnight. The primary is detected by a Goat anti-rabbit polymer IgG labeled by HRP and visualized using 0.05 % DAB.



Immunohistochemistry

Image 2. IHC image of ABIN7175288 diluted at 1:200 and staining in paraffin-embedded human kidney tissue performed on a Leica Bond™ system. After dewaxing and hydration, antigen retrieval was mediated by high pressure in a citrate buffer (pH 6.0). Section was blocked with 10 % normal goat serum 30 min at RT. Then primary antibody (1 % BSA) was incubated at 4 °C overnight. The primary is detected by a Goat anti-rabbit polymer IgG labeled by HRP and visualized using 0.05 % DAB.