

Datasheet for ABIN7175304
anti-VPS29 antibody (AA 68-145)



[Go to Product page](#)

3 Images

Overview

Quantity:	100 µg
Target:	VPS29
Binding Specificity:	AA 68-145
Reactivity:	Human
Host:	Rabbit
Clonality:	Polyclonal
Conjugate:	This VPS29 antibody is un-conjugated
Application:	ELISA, Western Blotting (WB), Immunohistochemistry (IHC), Immunofluorescence (IF)

Product Details

Immunogen:	Recombinant Human Vacuolar protein sorting-associated protein 29 protein (68-145AA)
Isotype:	IgG
Cross-Reactivity:	Human
Purification:	>95%, Protein G purified

Target Details

Target:	VPS29
Alternative Name:	VPS29 (VPS29 Products)
Background:	Background: Acts as component of the retromer cargo-selective complex (CSC). The CSC is believed to be the core functional component of retromer or respective retromer complex

Target Details

variants acting to prevent missorting of selected transmembrane cargo proteins into the lysosomal degradation pathway. The recruitment of the CSC to the endosomal membrane involves RAB7A and SNX3. The SNX-BAR retromer mediates retrograde transport of cargo proteins from endosomes to the trans-Golgi network (TGN) and is involved in endosome-to-plasma membrane transport for cargo protein recycling. The SNX3-retromer mediates the retrograde endosome-to-TGN transport of WLS distinct from the SNX-BAR retromer pathway. The SNX27-retromer is believed to be involved in endosome-to-plasma membrane trafficking and recycling of a broad spectrum of cargo proteins. The CSC seems to act as recruitment hub for other proteins, such as the WASH complex and TBC1D5. Required to regulate transcytosis of the polymeric immunoglobulin receptor (pIgR-pIgA) (Probable). Involved in GLUT1 endosome-to-plasma membrane trafficking, the function is dependent of association with ANKRD27 (PubMed:24856514).

Aliases: DC15 antibody, DC7 antibody, DKFZp564F0223 antibody, FLJ20492 antibody, hVPS29 antibody, PEP11 antibody, PEP11 homolog antibody, Retromer protein antibody, Vacuolar protein sorting 29 antibody, Vacuolar protein sorting 29 (yeast homolog) antibody, Vacuolar protein sorting 29 (yeast) antibody, Vacuolar protein sorting 29 homolog (S. cerevisiae) antibody, Vacuolar protein sorting 29 homolog antibody, Vacuolar protein sorting associated protein 29 antibody, Vacuolar protein sorting-associated protein 29 antibody, Vacuolar sorting protein VPS29/PEP11 antibody, Vesicle protein sorting 29 antibody, VPS 29 antibody, VPS29 antibody, VPS29 retromer complex component antibody, VPS29_HUMAN antibody, x 007 protein antibody

UniProt: [Q9UBQ0](#)

Application Details

Application Notes: Recommended dilution: WB:1:500-1:5000, IHC:1:20-1:200, IF:1:50-1:200,

Restrictions: For Research Use only

Handling

Format: Liquid

Buffer: Preservative: 0.03 % Proclin 300
Constituents: 50 % Glycerol, 0.01M PBS, pH 7.4

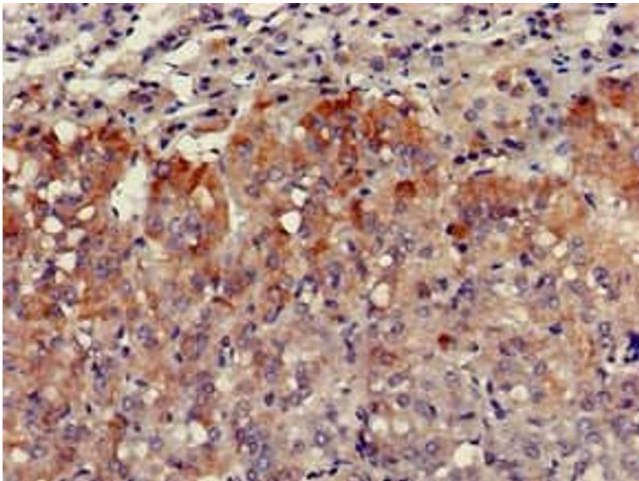
Preservative: ProClin

Precaution of Use: This product contains ProClin: a POISONOUS AND HAZARDOUS SUBSTANCE which should be

Handling

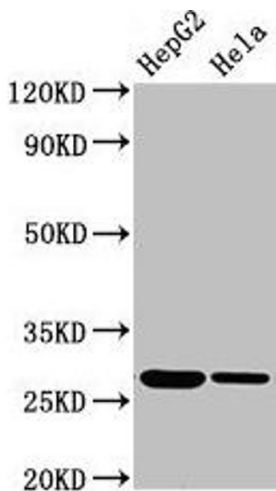
	handled by trained staff only.
Storage:	-20 °C,-80 °C
Storage Comment:	Upon receipt, store at -20°C or -80°C. Avoid repeated freeze.

Images



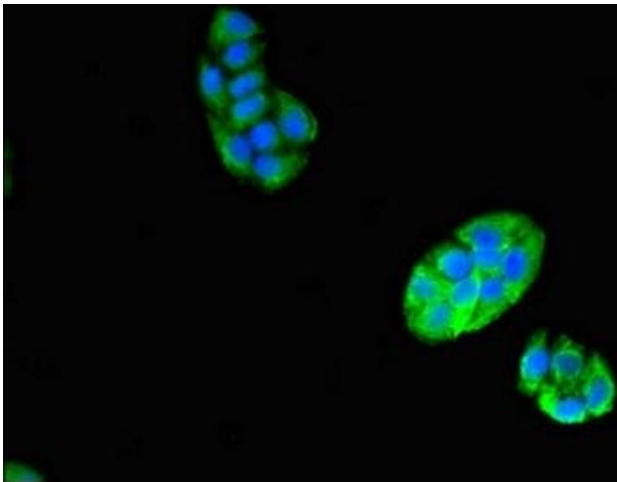
Immunohistochemistry

Image 1. Immunohistochemistry of paraffin-embedded human adrenal gland tissue using ABIN7175304 at dilution of 1:100



Western Blotting

Image 2. Western Blot Positive WB detected in: HepG2 whole cell lysate, HeLa whole cell lysate All lanes: VPS29 antibody at 3.4 µg/mL Secondary Goat polyclonal to rabbit IgG at 1/50000 dilution Predicted band size: 21 kDa Observed band size: 28 kDa



Immunofluorescence

Image 3. Immunofluorescent analysis of PC-3 cells using ABIN7175304 at dilution of 1:100 and Alexa Fluor 488-conjugated AffiniPure Goat Anti-Rabbit IgG(H+L)