

Datasheet for ABIN7175332  
**anti-VTA1 antibody (AA 23-307)**[Go to Product page](#)

## 2 Images

## Overview

Quantity:	100 µg
Target:	VTA1
Binding Specificity:	AA 23-307
Reactivity:	Human
Host:	Rabbit
Clonality:	Polyclonal
Conjugate:	This VTA1 antibody is un-conjugated
Application:	ELISA, Immunohistochemistry (IHC)

## Product Details

Immunogen:	Recombinant Human Vacuolar protein sorting-associated protein VTA1 homolog protein (23-307AA)
Isotype:	IgG
Cross-Reactivity:	Human
Purification:	>95%, Protein G purified

## Target Details

Target:	VTA1
Alternative Name:	VTA1 ( <a href="#">VTA1 Products</a> )
Background:	Background: Involved in the endosomal multivesicular bodies (MVB) pathway. MVBs contain

## Target Details

intraluminal vesicles (ILVs) that are generated by invagination and scission from the limiting membrane of the endosome and mostly are delivered to lysosomes enabling degradation of membrane proteins, such as stimulated growth factor receptors, lysosomal enzymes and lipids. Thought to be a cofactor of VPS4A/B, which catalyzes disassembles membrane-associated ESCRT-III assemblies. Involved in the sorting and down-regulation of EGFR (By similarity). Involved in HIV-1 budding.

Aliases: C6orf55 antibody, Chromosome 6 open reading frame 55 antibody, Dopamine responsive protein DRG 1 antibody, Dopamine-responsive gene 1 protein antibody, DRG 1 antibody, DRG-1 antibody, DRG1 antibody, Homolog of mouse SKD1 binding protein 1 antibody, HSPC228 antibody, LIP5 antibody, LYST interacting protein 5 antibody, LYST-interacting protein 5 antibody, My012 antibody, SBP1 antibody, SKD1 binding protein 1 antibody, SKD1-binding protein 1 antibody, Vacuolar protein sorting-associated protein VTA1 homolog antibody, Vps20 associated 1 homolog (S. cerevisiae) antibody, VTA1 antibody, VTA1\_HUMAN antibody

UniProt: [Q9NP79](#)

## Application Details

Application Notes: Recommended dilution: IHC:1:20-1:200,

Restrictions: For Research Use only

## Handling

Format: Liquid

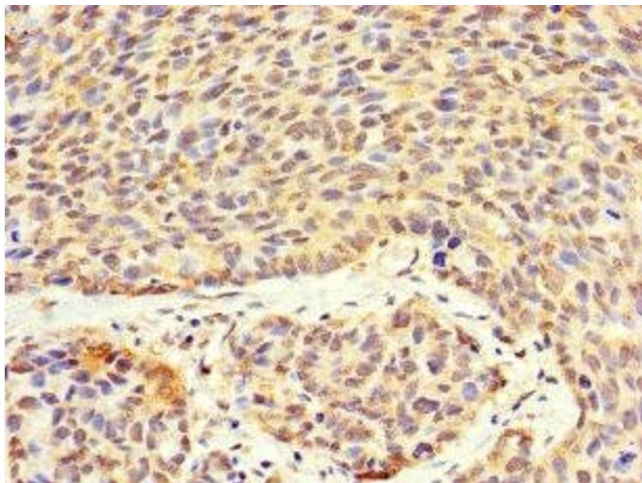
Buffer: Preservative: 0.03 % Proclin 300  
Constituents: 50 % Glycerol, 0.01M PBS, PH 7.4

Preservative: ProClin

Precaution of Use: This product contains ProClin: a POISONOUS AND HAZARDOUS SUBSTANCE which should be handled by trained staff only.

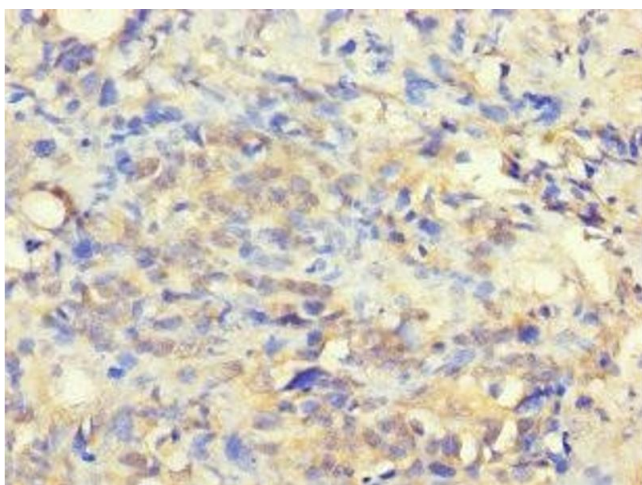
Storage: -20 °C,-80 °C

Storage Comment: Upon receipt, store at -20°C or -80°C. Avoid repeated freeze.



#### Immunohistochemistry

**Image 1.** Immunohistochemistry of paraffin-embedded human ovarian cancer using ABIN7175332 at dilution of 1:100



#### Immunohistochemistry

**Image 2.** Immunohistochemistry of paraffin-embedded human gastric cancer using ABIN7175332 at dilution of 1:100