

Datasheet for ABIN7175336  
**anti-VPS25 antibody (AA 1-176)**[Go to Product page](#)

## 4 Images

## Overview

Quantity:	100 µg
Target:	VPS25
Binding Specificity:	AA 1-176
Reactivity:	Human
Host:	Rabbit
Clonality:	Polyclonal
Conjugate:	This VPS25 antibody is un-conjugated
Application:	Western Blotting (WB), ELISA, Immunohistochemistry (IHC), Immunofluorescence (IF)

## Product Details

Immunogen:	Recombinant Human Vacuolar protein-sorting-associated protein 25 protein (1-176AA)
Isotype:	IgG
Cross-Reactivity:	Human, Mouse
Purification:	>95%, Protein G purified

## Target Details

Target:	VPS25
Alternative Name:	VPS25 ( <a href="#">VPS25 Products</a> )
Background:	Background: Component of the ESCRT-II complex (endosomal sorting complex required for transport II), which is required for multivesicular body (MVB) formation and sorting of

## Target Details

endosomal cargo proteins into MVBs. The MVB pathway mediates delivery of transmembrane proteins into the lumen of the lysosome for degradation. The ESCRT-II complex is probably involved in the recruitment of the ESCRT-III complex. The ESCRT-II complex may also play a role in transcription regulation, possibly via its interaction with ELL. The ESCRT-II complex may be involved in facilitating the budding of certain RNA viruses.

Aliases: Dermal papilla derived protein 9 antibody, Dermal papilla-derived protein 9 antibody, DERP9 antibody, EAP20 antibody, ELL associated protein of 20 kDa antibody, ELL-associated protein of 20 kDa antibody, ESCRT-II complex subunit VPS25 antibody, FAP20 antibody, HGNC:28122 antibody, hVps25 antibody, MGC10540 antibody, Vacuolar protein sorting 25 homolog (S. cerevisiae) antibody, Vacuolar protein sorting associated protein 25 antibody, Vacuolar protein-sorting-associated protein 25 antibody, VPS25 antibody, VPS25\_HUMAN antibody

UniProt: [Q9BRG1](#)

## Application Details

Application Notes: Recommended dilution: WB:1:1000-1:5000, IHC:1:20-1:200, IF:1:50-1:200,

Restrictions: For Research Use only

## Handling

Format: Liquid

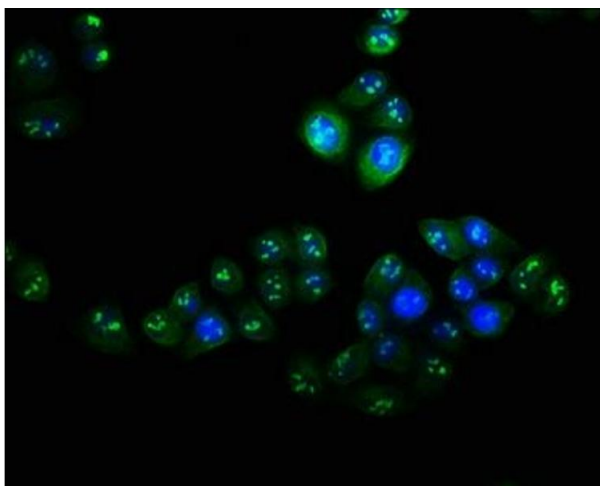
Buffer: Preservative: 0.03 % Proclin 300  
Constituents: 50 % Glycerol, 0.01M PBS, PH 7.4

Preservative: ProClin

Precaution of Use: This product contains ProClin: a POISONOUS AND HAZARDOUS SUBSTANCE which should be handled by trained staff only.

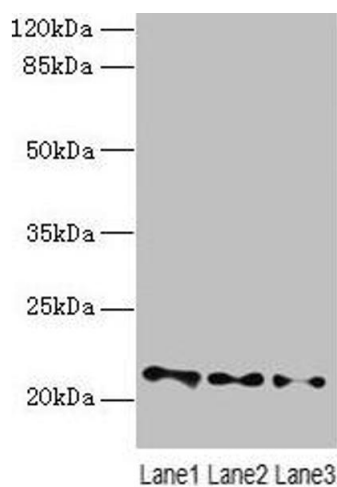
Storage: -20 °C, -80 °C

Storage Comment: Upon receipt, store at -20°C or -80°C. Avoid repeated freeze.



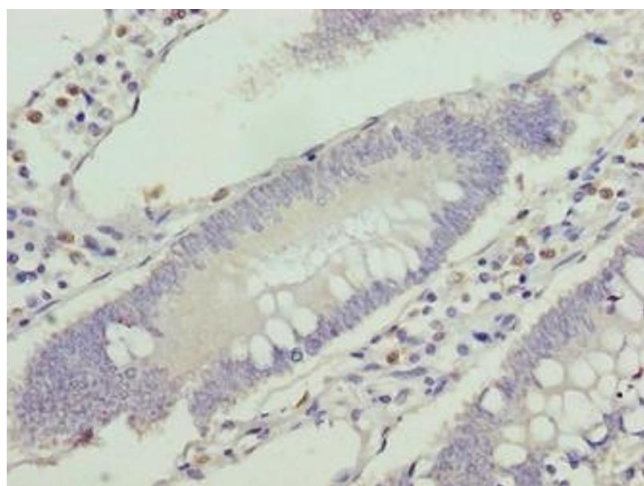
#### Immunofluorescence

**Image 1.** Immunofluorescence staining of HeLa cells with ABIN7175336 at 1:100, counter-stained with DAPI. The cells were fixed in 4% formaldehyde, permeabilized using 0.2% Triton X-100 and blocked in 10% normal Goat Serum. The cells were then incubated with the antibody overnight at 4°C. The secondary antibody was Alexa Fluor 488-conjugated AffiniPure Goat Anti-Rabbit IgG(H+L).



#### Western Blotting

**Image 2.** Western blot All lanes: VPS25 antibody at 3 µg/mL  
Lane 1: Mouse kidney tissue Lane 2: HL60 whole cell lysate  
Lane 3: THP-1 whole cell lysate Secondary Goat polyclonal to rabbit IgG at 1/10000 dilution Predicted band size: 21 kDa  
Observed band size: 21 kDa



#### Immunohistochemistry

**Image 3.** Immunohistochemistry of paraffin-embedded human colon cancer using ABIN7175336 at dilution of 1:100

Please check the [product details page](#) for more images. Overall 4 images are available for ABIN7175336.