



[Go to Product page](#)

Datasheet for ABIN7175358
anti-VANGL2 antibody (AA 1-110)

4 Images

Overview

Quantity:	100 µL
Target:	VANGL2
Binding Specificity:	AA 1-110
Reactivity:	Human
Host:	Rabbit
Clonality:	Polyclonal
Conjugate:	This VANGL2 antibody is un-conjugated
Application:	Western Blotting (WB), ELISA, Immunohistochemistry (IHC)

Product Details

Immunogen:	Recombinant Human Vang-like protein 2 protein (1-110AA)
Isotype:	IgG
Cross-Reactivity:	Human, Mouse
Purification:	Antigen Affinity Purified

Target Details

Target:	VANGL2
Alternative Name:	VANGL2 (VANGL2 Products)
Background:	Background: Involved in the control of early morphogenesis and patterning of both axial midline structures and the development of neural plate. Plays a role in the regulation of planar cell

Target Details

polarity, particularly in the orientation of stereociliary bundles in the cochlea. Required for polarization and movement of myocardializing cells in the outflow tract and seems to act via RHOA signaling to regulate this process. Required for cell surface localization of FZD3 and FZD6 in the inner ear (By similarity).

Aliases: Homolog of Drosophila strabismus antibody, KIAA1215 antibody, Loop tail associated protein antibody, loop tail protein 1 homolog antibody, Loop-tail protein 1 homolog antibody, LPP 1 antibody, LPP1 antibody, LTAP antibody, MGC119403 antibody, MGC119404 antibody, STB 1 antibody, STB1 antibody, STBM 1 antibody, STBM antibody, STBM1 antibody, Strabismus 1 antibody, van Gogh like protein 2 antibody, Van Gogh-like protein 2 antibody, Vang (van gogh, Drosophila) like 2 antibody, Vang like 2 (van gogh, Drosophila) antibody, vang like 2 antibody, vang like protein 2 antibody, Vang-like protein 2 antibody, VANG2_HUMAN antibody, VANGL 2 antibody, VANGL planar cell polarity protein 2 antibody, Vangl2 antibody

UniProt: [Q9ULK5](#)

Pathways: [WNT Signaling](#), [Stem Cell Maintenance](#), [Tube Formation](#), [Asymmetric Protein Localization](#)

Application Details

Application Notes: Recommended dilution: WB:1:500-1:5000, IHC:1:20-1:200,

Restrictions: For Research Use only

Handling

Format: Liquid

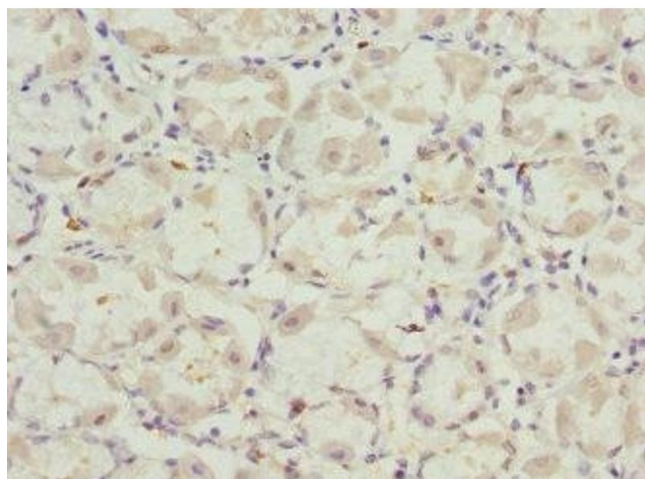
Buffer: PBS with 0.02 % sodium azide, 50 % glycerol, pH 7.3.

Preservative: Sodium azide

Precaution of Use: This product contains Sodium azide: a POISONOUS AND HAZARDOUS SUBSTANCE which should be handled by trained staff only.

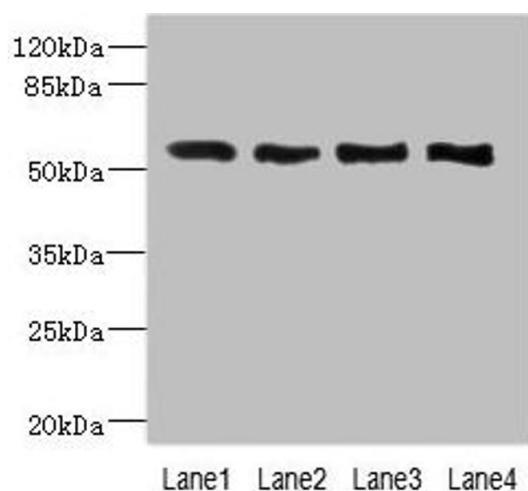
Storage: -20 °C,-80 °C

Storage Comment: Upon receipt, store at -20°C or -80°C. Avoid repeated freeze.



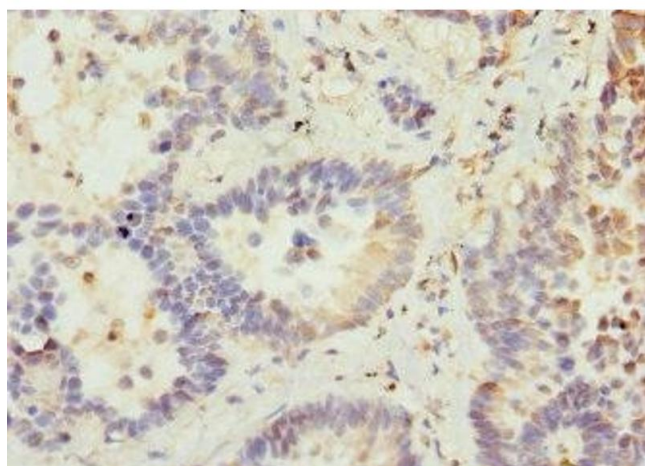
Immunohistochemistry

Image 1. Immunohistochemistry of paraffin-embedded human gastric cancer using ABIN7175358 at dilution of 1:100



Western Blotting

Image 2. Western blot All lanes: VANGL2 antibody at 2.26 μ g/mL Lane 1: HepG2 whole cell lysate Lane 2: MCF-7 whole cell lysate Lane 3: Hela whole cell lysate Lane 4: NIH/3T3 whole cell lysate Secondary Goat polyclonal to rabbit IgG at 1/10000 dilution Predicted band size: 60 kDa Observed band size: 60 kDa



Immunohistochemistry

Image 3. Immunohistochemistry of paraffin-embedded human lung cancer using ABIN7175358 at dilution of 1:100

Please check the [product details page](#) for more images. Overall 4 images are available for ABIN7175358.