



[Go to Product page](#)

Datasheet for ABIN7175498

anti-SLC32A1 antibody (AA 14-118)

3 Images

Overview

Quantity:	100 µg
Target:	SLC32A1
Binding Specificity:	AA 14-118
Reactivity:	Human
Host:	Rabbit
Clonality:	Polyclonal
Conjugate:	This SLC32A1 antibody is un-conjugated
Application:	Western Blotting (WB), ELISA, Immunohistochemistry (IHC), Immunofluorescence (IF)

Product Details

Immunogen:	Recombinant Human Vesicular inhibitory amino acid transporter protein (14-118AA)
Isotype:	IgG
Cross-Reactivity:	Human, Mouse
Purification:	>95%, Protein G purified

Target Details

Target:	SLC32A1
Alternative Name:	SLC32A1 (SLC32A1 Products)
Background:	Background: Involved in the uptake of GABA and glycine into the synaptic vesicles. Aliases: bA12201.1 antibody, GABA and glycine transporter antibody, hVIAAT antibody, SLC32A

Target Details

1 antibody, Slc32a1 antibody, solute carrier family 32 (GABA vesicular transporter) member 1 antibody, Solute carrier family 32 member 1 antibody, Vesicular GABA Amino Acid Transporter antibody, Vesicular GABA transporter antibody, Vesicular inhibitory amino acid transporter antibody, VGAT antibody, VIAAT antibody, VIAAT_HUMAN antibody

UniProt: [Q9H598](#)

Pathways: [Proton Transport](#)

Application Details

Application Notes: Recommended dilution: WB:1:500-1:5000, IHC:1:20-1:200, IF:1:50-1:200,

Restrictions: For Research Use only

Handling

Format: Liquid

Buffer: Preservative: 0.03 % Proclin 300
Constituents: 50 % Glycerol, 0.01M PBS, pH 7.4

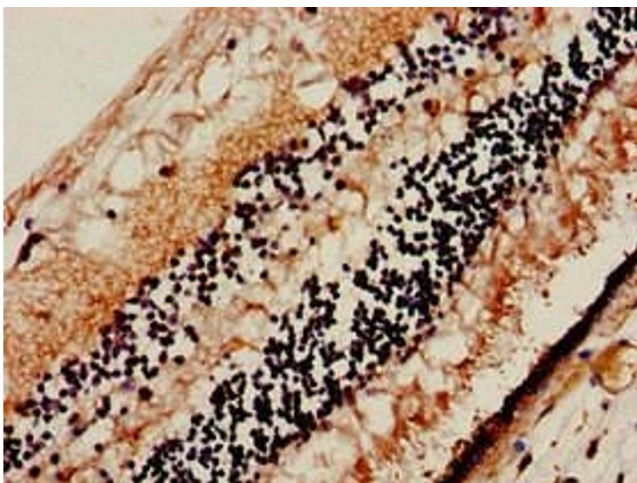
Preservative: ProClin

Precaution of Use: This product contains ProClin: a POISONOUS AND HAZARDOUS SUBSTANCE which should be handled by trained staff only.

Storage: -20 °C,-80 °C

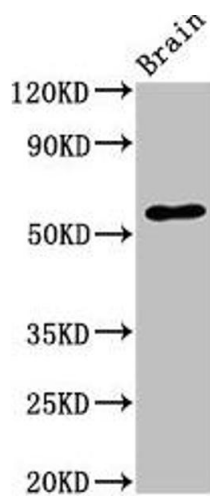
Storage Comment: Upon receipt, store at -20°C or -80°C. Avoid repeated freeze.

Images



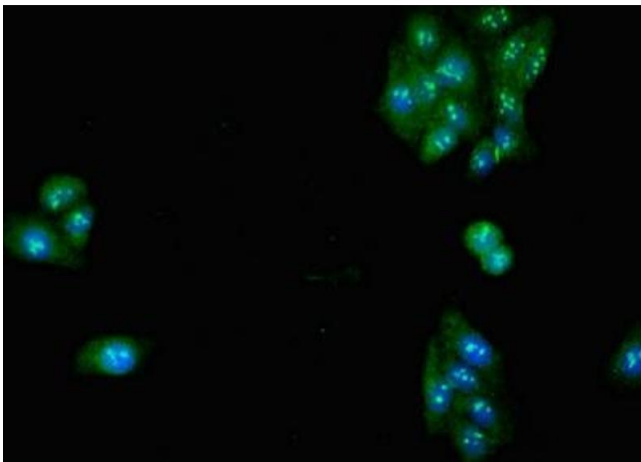
Immunohistochemistry

Image 1. Immunohistochemistry of paraffin-embedded human eye tissue using ABIN7175498 at dilution of 1:100



Western Blotting

Image 2. Western Blot Positive WB detected in: Mouse brain tissue All lanes: SLC32A1 antibody at 3.4 $\mu\text{g}/\text{mL}$ Secondary Goat polyclonal to rabbit IgG at 1/50000 dilution Predicted band size: 58 kDa Observed band size: 58 kDa



Immunofluorescence

Image 3. Immunofluorescent analysis of HepG2 cells using ABIN7175498 at dilution of 1:100 and Alexa Fluor 488-conjugated AffiniPure Goat Anti-Rabbit IgG(H+L)