



[Go to Product page](#)

Datasheet for ABIN7175541
anti-PROC antibody (AA 288-409)

2 Images

Overview

Quantity:	100 µg
Target:	PROC
Binding Specificity:	AA 288-409
Reactivity:	Human
Host:	Rabbit
Clonality:	Polyclonal
Conjugate:	This PROC antibody is un-conjugated
Application:	ELISA, Immunohistochemistry (IHC), Immunofluorescence (IF)

Product Details

Immunogen:	Recombinant Human Vitamin K-dependent protein C protein (288-409AA)
Isotype:	IgG
Cross-Reactivity:	Human
Purification:	>95%, Protein G purified

Target Details

Target:	PROC
Alternative Name:	PROC (PROC Products)
Target Type:	Viral Protein
Background:	Background: Protein C is a vitamin K-dependent serine protease that regulates blood

Target Details

coagulation by inactivating factors Va and VIIIa in the presence of calcium ions and phospholipids (PubMed:25618265). Exerts a protective effect on the endothelial cell barrier function (PubMed:25651845).

Aliases: Activation peptide antibody, Anticoagulant protein C antibody, APC antibody, Autoprothrombin IIA antibody, Blood coagulation factor XIV antibody, EC 3.4.21.69 antibody, PC antibody, proC antibody, PROC_HUMAN antibody, PROC1 antibody, Protein C (inactivator of coagulation factors Va and VIIIa) antibody, THPH3 antibody, THPH4 antibody, Vitamin K dependent protein C antibody

UniProt: [P04070](#)

Application Details

Application Notes: Recommended dilution: IHC:1:20-1:200, IF:1:50-1:200,

Restrictions: For Research Use only

Handling

Format: Liquid

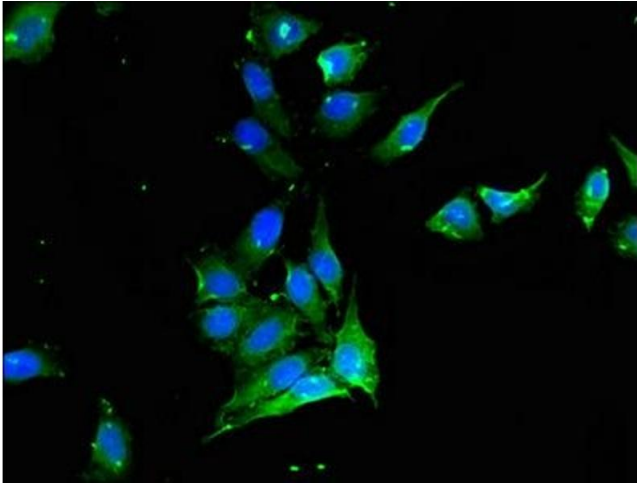
Buffer: Preservative: 0.03 % Proclin 300
Constituents: 50 % Glycerol, 0.01M PBS, pH 7.4

Preservative: ProClin

Precaution of Use: This product contains ProClin: a POISONOUS AND HAZARDOUS SUBSTANCE which should be handled by trained staff only.

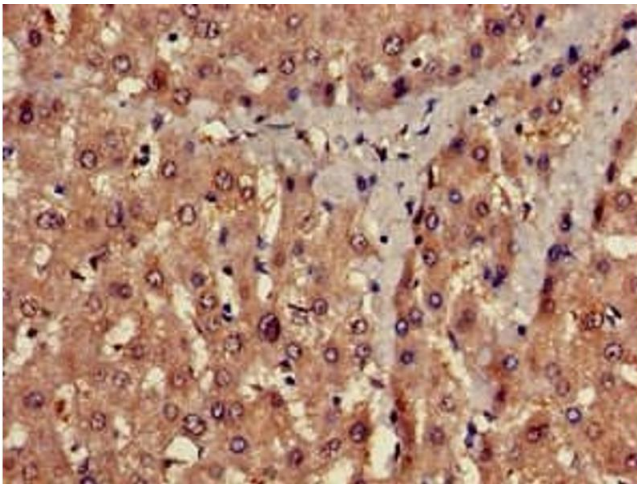
Storage: -20 °C,-80 °C

Storage Comment: Upon receipt, store at -20°C or -80°C. Avoid repeated freeze.



Immunofluorescence

Image 1. Immunofluorescent analysis of HeLa cells using ABIN7175541 at dilution of 1:100 and Alexa Fluor 488-conjugated AffiniPure Goat Anti-Rabbit IgG(H+L)



Immunohistochemistry

Image 2. Immunohistochemistry of paraffin-embedded human liver tissue using ABIN7175541 at dilution of 1:100