

Datasheet for ABIN7175586  
**anti-CACNA1C antibody (AA 1755-1971)**



[Go to Product page](#)

2 Images

## Overview

Quantity:	100 µg
Target:	CACNA1C
Binding Specificity:	AA 1755-1971
Reactivity:	Human
Host:	Rabbit
Clonality:	Polyclonal
Conjugate:	This CACNA1C antibody is un-conjugated
Application:	Immunohistochemistry (IHC), ELISA, Immunofluorescence (IF)

## Product Details

Immunogen:	Recombinant Human Voltage-dependent L-type calcium channel subunit alpha-1C protein (1755-1971AA)
Isotype:	IgG
Cross-Reactivity:	Human
Purification:	>95%, Protein G purified

## Target Details

Target:	CACNA1C
Alternative Name:	CACNA1C ( <a href="#">CACNA1C Products</a> )
Background:	Background: Voltage-sensitive calcium channels (VSCC) mediate the entry of calcium ions into

## Target Details

excitable cells and are also involved in a variety of calcium-dependent processes, including muscle contraction, hormone or neurotransmitter release, gene expression, cell motility, cell division and cell death. The isoform alpha-1C gives rise to L-type calcium currents. Long-lasting (L-type) calcium channels belong to the 'high-voltage activated' (HVA) group. They are blocked by dihydropyridines (DHP), phenylalkylamines, benzothiazepines, and by omega-agatoxin-IIIa (omega-Aga-IIIa). They are however insensitive to omega-conotoxin-GVIA (omega-CTx-GVIA) and omega-agatoxin-IVA (omega-Aga-IVA). Calcium channels containing the alpha-1C subunit play an important role in excitation-contraction coupling in the heart. The various isoforms display marked differences in the sensitivity to DHP compounds. Binding of calmodulin or CABP1 at the same regulatory sites results in an opposite effects on the channel function.

Aliases: alpha-1 polypeptide antibody, cardiac muscle antibody, isoform 1 antibody, L type antibody, CAC1C\_HUMAN antibody, CACH 2 antibody, CACH2 antibody, CACN 2 antibody, CACN2 antibody, CACNA1C antibody, CACNL1A1 antibody, Calcium channel antibody, Calcium channel cardiac dihydropyridine sensitive alpha 1 subunit antibody, Calcium channel L type alpha 1 polypeptide isoform 1 cardiac muscle antibody, Calcium channel voltage dependent L type alpha 1C subunit antibody, Cav1.2 antibody, CCHL1A1 antibody, DHPR alpha 1 antibody, DHPR alpha 1 subunit antibody, LQT8 antibody, TS antibody, Voltage dependent L type calcium channel alpha 1C subunit antibody, Voltage dependent L type calcium channel subunit alpha 1C antibody, Voltage gated calcium channel alpha subunit Cav1.2 antibody, Voltage gated calcium channel subunit alpha Cav1.2 antibody, Voltage gated L type calcium channel Cav1.2 alpha 1 subunit, splice variant 10\* antibody, Voltage-dependent L-type calcium channel subunit alpha-1C antibody, Voltage-gated calcium channel subunit alpha Cav1.2 antibody

UniProt:	<a href="#">Q13936</a>
Pathways:	<a href="#">Hormone Transport</a> , <a href="#">Carbohydrate Homeostasis</a>

## Application Details

Application Notes:	Recommended dilution: IHC:1:20-1:200, IF:1:200-1:500,
Restrictions:	For Research Use only

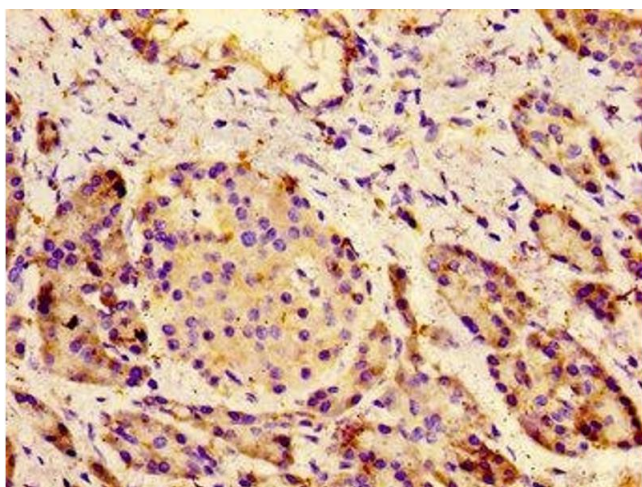
## Handling

Format:	Liquid
Buffer:	Preservative: 0.03 % Proclin 300

## Handling

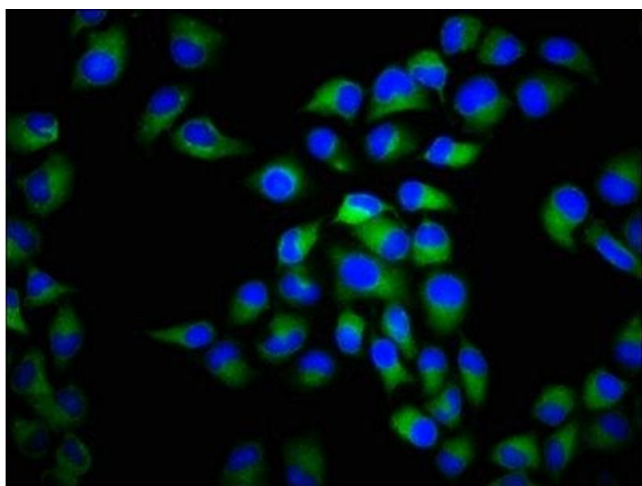
	Constituents: 50 % Glycerol, 0.01M PBS, pH 7.4
Preservative:	ProClin
Precaution of Use:	This product contains ProClin: a POISONOUS AND HAZARDOUS SUBSTANCE which should be handled by trained staff only.
Storage:	-20 °C,-80 °C
Storage Comment:	Upon receipt, store at -20°C or -80°C. Avoid repeated freeze.

## Images



### Immunohistochemistry

**Image 1.** Immunohistochemistry of paraffin-embedded human pancreatic tissue using ABIN7175586 at dilution of 1:100



### Immunofluorescence

**Image 2.** Immunofluorescence staining of HeLa cells with ABIN7175586 at 1:266, counter-stained with DAPI. The cells were fixed in 4% formaldehyde, permeabilized using 0.2% Triton X-100 and blocked in 10% normal Goat Serum. The cells were then incubated with the antibody overnight at 4°C. The secondary antibody was Alexa Fluor 488-conjugated AffiniPure Goat Anti-Rabbit IgG(H+L).