



[Go to Product page](#)

Datasheet for ABIN7175638
anti-VHLL antibody (AA 1-139)

2 Images

Overview

Quantity:	100 µg
Target:	VHLL
Binding Specificity:	AA 1-139
Reactivity:	Human
Host:	Rabbit
Clonality:	Polyclonal
Conjugate:	This VHLL antibody is un-conjugated
Application:	ELISA, Immunohistochemistry (IHC)

Product Details

Immunogen:	Recombinant Human von Hippel-Lindau-like protein (1-139AA)
Isotype:	IgG
Cross-Reactivity:	Human
Purification:	>95%, Protein G purified

Target Details

Target:	VHLL
Alternative Name:	VHLL (VHLL Products)
Background:	Background: Functions as a dominant-negative VHL to serve as a protector of HIFalpha. Aliases: VHLL antibody, VLP antibody, von Hippel-Lindau-like protein antibody, VHL-like protein

Target Details

antibody, VLP antibody

UniProt: [Q6RSH7](#)

Application Details

Application Notes: Recommended dilution: IHC:1:20-1:200,

Restrictions: For Research Use only

Handling

Format: Liquid

Buffer: Preservative: 0.03 % Proclin 300
Constituents: 50 % Glycerol, 0.01M PBS, PH 7.4

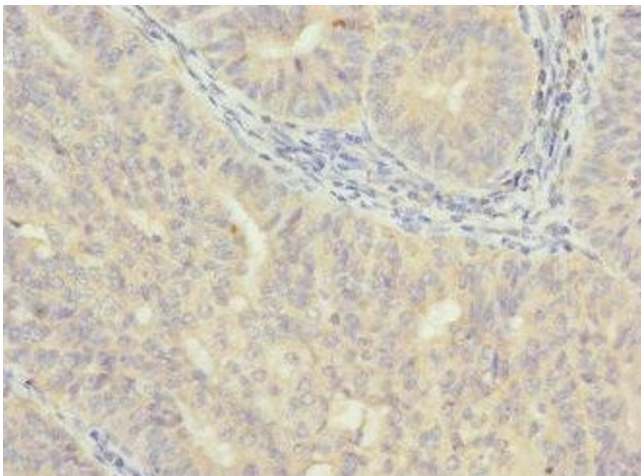
Preservative: ProClin

Precaution of Use: This product contains ProClin: a POISONOUS AND HAZARDOUS SUBSTANCE which should be handled by trained staff only.

Storage: -20 °C,-80 °C

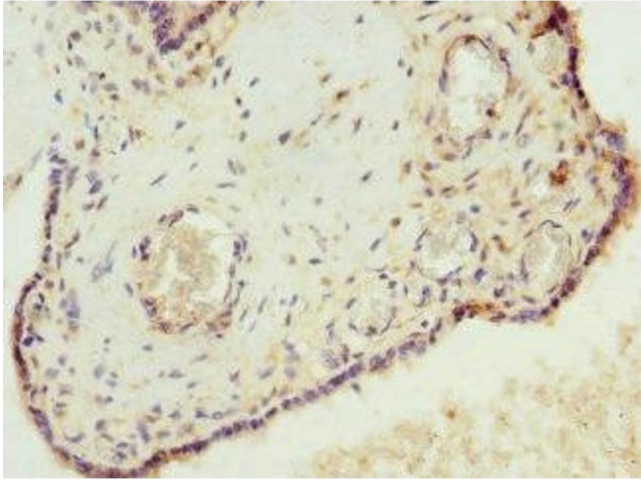
Storage Comment: Upon receipt, store at -20°C or -80°C. Avoid repeated freeze.

Images



Immunohistochemistry

Image 1. Immunohistochemistry of paraffin-embedded human endometrial cancer using ABIN7175638 at dilution of 1:100



Immunohistochemistry

Image 2. Immunohistochemistry of paraffin-embedded human placenta tissue using ABIN7175638 at dilution of 1:100