

Datasheet for ABIN7175671
anti-WFDC2 antibody (AA 31-124)[Go to Product page](#)

4 Images

Overview

Quantity:	100 µg
Target:	WFDC2
Binding Specificity:	AA 31-124
Reactivity:	Human
Host:	Rabbit
Clonality:	Polyclonal
Conjugate:	This WFDC2 antibody is un-conjugated
Application:	ELISA, Western Blotting (WB), Immunohistochemistry (IHC), Immunofluorescence (IF)

Product Details

Immunogen:	Recombinant Human WAP four-disulfide core domain protein 2 protein (31-124AA)
Isotype:	IgG
Cross-Reactivity:	Human, Mouse
Purification:	>95%, Protein G purified

Target Details

Target:	WFDC2
Alternative Name:	WFDC2 (WFDC2 Products)
Background:	DJ461P17.6 antibody, EDDM4 antibody, epididymal protein 4 antibody, Epididymal secretory protein E4 antibody, Epididymis specific whey acidic protein type four disulfide core antibody,

Target Details

HE 4 antibody, Major epididymis specific protein E4 antibody, Major epididymis-specific protein E4 antibody, MGC57529 antibody, Putative protease inhibitor WAP5 antibody, WAP 5 antibody, WAP domain containing protein HE4 antibody, WAP domain containing protein HE4 V4 antibody, WAP four disulfide core domain 2 antibody, WAP four disulfide core domain protein 2 antibody, WAP four-disulfide core domain protein 2 antibody, WAP5 antibody, WFDC 2 antibody, WFDC2 antibody, WFDC2_HUMAN antibody

UniProt: [Q14508](#)

Application Details

Application Notes: Recommended dilution: WB:1:500-1:2000, IHC:1:200-1:500, IF:1:50-1:200,

Restrictions: For Research Use only

Handling

Format: Liquid

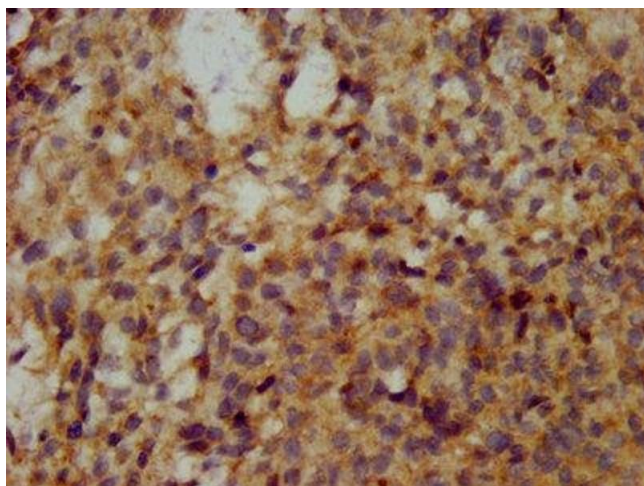
Buffer: Preservative: 0.03 % Proclin 300
Constituents: 50 % Glycerol, 0.01M PBS, PH 7.4

Preservative: ProClin

Precaution of Use: This product contains ProClin: a POISONOUS AND HAZARDOUS SUBSTANCE which should be handled by trained staff only.

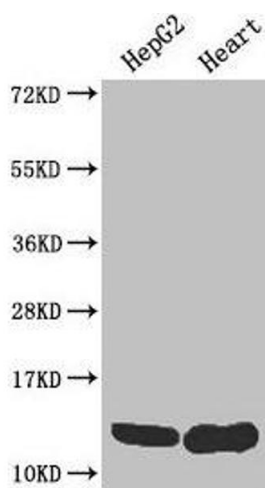
Storage: -20 °C,-80 °C

Storage Comment: Upon receipt, store at -20°C or -80°C. Avoid repeated freeze.



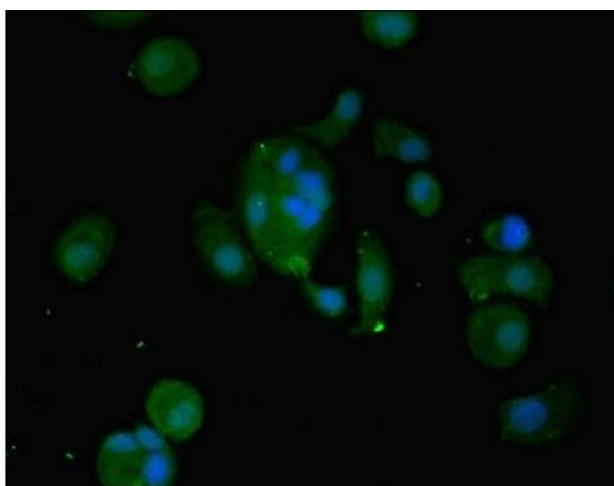
Immunohistochemistry

Image 1. IHC image of ABIN7175671 diluted at 1:200 and staining in paraffin-embedded human ovarian cancer performed on a Leica Bond™ system. After dewaxing and hydration, antigen retrieval was mediated by high pressure in a citrate buffer (pH 6.0). Section was blocked with 10% normal goat serum 30min at RT. Then primary antibody (1% BSA) was incubated at 4°C overnight. The primary is detected by a biotinylated secondary antibody and visualized using an HRP conjugated SP system.



Western Blotting

Image 2. Western Blot Positive WB detected in: HepG2 whole cell lysate, Mouse heart tissue All lanes: WFDC2 antibody at 4 µg/mL Secondary Goat polyclonal to rabbit IgG at 1/50000 dilution Predicted band size: 13, 9, 12 kDa Observed band size: 13 kDa



Immunofluorescence

Image 3. Immunofluorescent analysis of MCF-7 cells using ABIN7175671 at dilution of 1:100 and Alexa Fluor 488-conjugated AffiniPure Goat Anti-Rabbit IgG(H+L)

Please check the [product details page](#) for more images. Overall 4 images are available for ABIN7175671.