

Datasheet for ABIN7175679  
**anti-WIPF2 antibody (AA 18-176)**[Go to Product page](#)

## 2 Images

## Overview

Quantity:	100 µg
Target:	WIPF2
Binding Specificity:	AA 18-176
Reactivity:	Human
Host:	Rabbit
Clonality:	Polyclonal
Conjugate:	This WIPF2 antibody is un-conjugated
Application:	ELISA, Immunohistochemistry (IHC)

## Product Details

Immunogen:	Recombinant Human WAS/WASL-interacting protein family member 2 protein (18-176AA)
Isotype:	IgG
Cross-Reactivity:	Human
Purification:	>95%, Protein G purified

## Target Details

Target:	WIPF2
Alternative Name:	WIPF2 ( <a href="#">WIPF2 Products</a> )
Background:	Background: Plays an active role in the formation of cell surface protrusions downstream of activated PDGFB receptors. Plays an important role in actin-microspike formation through

## Target Details

cooperation with WASL. May cooperate with WASP and WASL to induce mobilization and reorganization of the actin filament system.

Aliases: WIPF2 antibody, WICH antibody, WIRE antibody, PP10631 antibody, WAS/WASL-interacting protein family member 2 antibody, WASP-interacting protein-related protein antibody, WIP- and CR16-homologous protein antibody, WIP-related protein antibody

UniProt: [Q8TF74](#)

## Application Details

Application Notes: Recommended dilution: IHC:1:500-1:1000,

Restrictions: For Research Use only

## Handling

Format: Liquid

Buffer: Preservative: 0.03 % Proclin 300  
Constituents: 50 % Glycerol, 0.01M PBS, pH 7.4

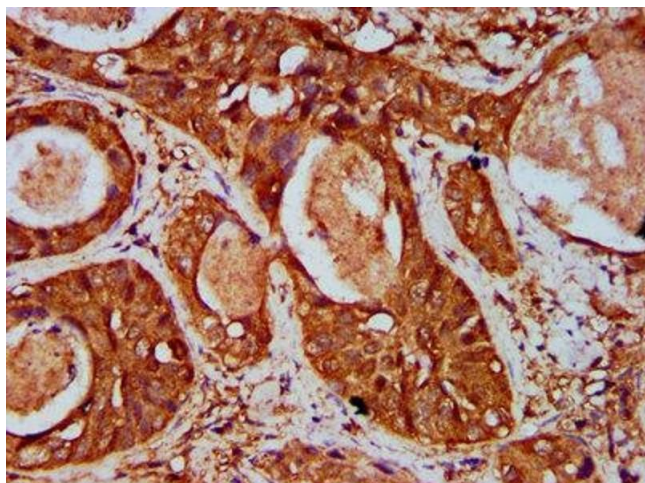
Preservative: ProClin

Precaution of Use: This product contains ProClin: a POISONOUS AND HAZARDOUS SUBSTANCE which should be handled by trained staff only.

Storage: -20 °C,-80 °C

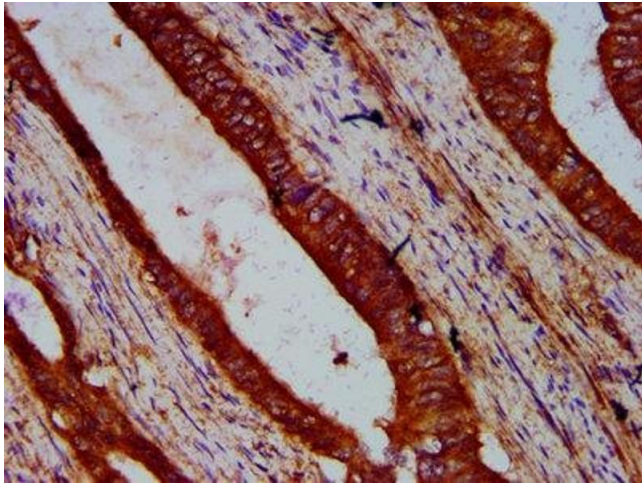
Storage Comment: Upon receipt, store at -20°C or -80°C. Avoid repeated freeze.

## Images



### Immunohistochemistry

**Image 1.** IHC image of ABIN7175679 diluted at 1:500 and staining in paraffin-embedded human cervical cancer performed on a Leica Bond™ system. After dewaxing and hydration, antigen retrieval was mediated by high pressure in a citrate buffer (pH 6.0). Section was blocked with 10% normal goat serum 30min at RT. Then primary antibody (1% BSA) was incubated at 4°C overnight. The primary is detected by a biotinylated secondary antibody and



visualized using an HRP conjugated SP system.

#### Immunohistochemistry

**Image 2.** IHC image of ABIN7175679 diluted at 1:500 and staining in paraffin-embedded human colon cancer performed on a Leica Bond™ system. After dewaxing and hydration, antigen retrieval was mediated by high pressure in a citrate buffer (pH 6.0). Section was blocked with 10% normal goat serum 30min at RT. Then primary antibody (1% BSA) was incubated at 4°C overnight. The primary is detected by a biotinylated secondary antibody and visualized using an HRP conjugated SP system.