



[Go to Product page](#)

Datasheet for ABIN7175687  
**anti-WDTC1 antibody (AA 201-420)**

1 Image

Overview

Quantity:	100 µg
Target:	WDTC1 (Wdtd1)
Binding Specificity:	AA 201-420
Reactivity:	Human
Host:	Rabbit
Clonality:	Polyclonal
Conjugate:	This WDTC1 antibody is un-conjugated
Application:	Western Blotting (WB), ELISA

Product Details

Immunogen:	Recombinant Human WD and tetratricopeptide repeats protein 1 protein (201-420AA)
Isotype:	IgG
Cross-Reactivity:	Human, Mouse
Purification:	Antigen Affinity Purified

Target Details

Target:	WDTC1 (Wdtd1)
Alternative Name:	WDTC1 ( <a href="#">Wdtd1 Products</a> )
Background:	Background: May function as a substrate receptor for CUL4-DDB1 E3 ubiquitin-protein ligase complex.

## Target Details

Aliases: WDTC1 antibody, KIAA1037 antibody, WD and tetratricopeptide repeats protein 1 antibody

UniProt: [Q8N5D0](#)

## Application Details

Application Notes: Recommended dilution: WB:1:500-1:2000,

Restrictions: For Research Use only

## Handling

Format: Liquid

Buffer: Preservative: 0.03 % Proclin 300  
Constituents: 50 % Glycerol, 0.01M PBS, PH 7.4

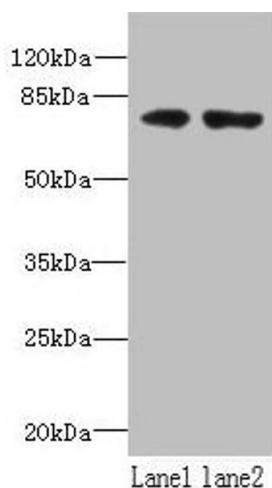
Preservative: ProClin

Precaution of Use: This product contains ProClin: a POISONOUS AND HAZARDOUS SUBSTANCE which should be handled by trained staff only.

Storage: -20 °C,-80 °C

Storage Comment: Upon receipt, store at -20°C or -80°C. Avoid repeated freeze.

## Images



### Western Blotting

**Image 1.** Western blot All lanes: WDTC1 antibody at 1.5  $\mu$ g/mL Lane 1: A431 whole cell lysate Lane 2: Mouse liver tissue Secondary Goat polyclonal to rabbit IgG at 1/10000 dilution Predicted band size: 76, 70, 68, 69 kDa Observed band size: 76 kDa