



[Go to Product page](#)

Datasheet for ABIN7175691
anti-WDFY1 antibody (AA 261-357)

1 Image

Overview

Quantity:	100 µg
Target:	WDFY1
Binding Specificity:	AA 261-357
Reactivity:	Human
Host:	Rabbit
Clonality:	Polyclonal
Conjugate:	This WDFY1 antibody is un-conjugated
Application:	ELISA, Western Blotting (WB)

Product Details

Immunogen:	Recombinant Human WD repeat and FYVE domain-containing protein 1 protein (261-357AA)
Isotype:	IgG
Cross-Reactivity:	Human, Mouse
Purification:	>95%, Protein G purified

Target Details

Target:	WDFY1
Alternative Name:	WDFY1 (WDFY1 Products)
Background:	Background: Positively regulates TLR3- and TLR4-mediated signaling pathways by bridging the interaction between TLR3 or TLR4 and TICAM1. Promotes TLR3/4 ligand-induced activation of

Target Details

transcription factors IRF3 and NF-kappa-B, as well as the production of IFN-beta and inflammatory cytokines (PubMed:25736436).

Aliases: FENS 1 antibody, FENS-1 antibody, FENS1 antibody, KIAA1435 antibody, Phosphoinositide binding protein 1 antibody, Phosphoinositide binding protein SR1 antibody, Phosphoinositide-binding protein 1 antibody, WD repeat and FYVE domain containing 1 antibody, WD repeat and FYVE domain-containing protein 1 antibody, WD40 and FYVE domain containing protein 1 antibody, WD40- and FYVE domain-containing protein 1 antibody, WDF1 antibody, WDFY1 antibody, WDFY1_HUMAN antibody, ZFYVE17 antibody, Zinc finger FYVE domain containing protein 17 antibody, Zinc finger FYVE domain-containing protein 17 antibody

UniProt: [Q8IWB7](#)

Application Details

Application Notes: Recommended dilution: WB:1:500-1:5000,

Restrictions: For Research Use only

Handling

Format: Liquid

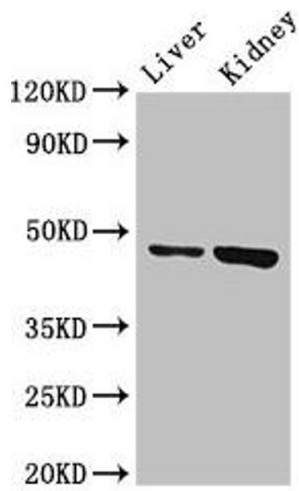
Buffer: Preservative: 0.03 % Proclin 300
Constituents: 50 % Glycerol, 0.01M PBS, PH 7.4

Preservative: ProClin

Precaution of Use: This product contains ProClin: a POISONOUS AND HAZARDOUS SUBSTANCE which should be handled by trained staff only.

Storage: -20 °C,-80 °C

Storage Comment: Upon receipt, store at -20°C or -80°C. Avoid repeated freeze.



Western Blotting

Image 1. Western Blot Positive WB detected in: Mouse liver tissue, Mouse kidney tissue All lanes: WDFY1 antibody at 3 $\mu\text{g}/\text{mL}$ Secondary Goat polyclonal to rabbit IgG at 1/50000 dilution Predicted band size: 47 kDa Observed band size: 47 kDa