

Datasheet for ABIN7175695
anti-WDFY2 antibody (AA 2-114)[Go to Product page](#)

2 Images

Overview

Quantity:	100 µg
Target:	WDFY2 (ZFYVE22)
Binding Specificity:	AA 2-114
Reactivity:	Human
Host:	Rabbit
Clonality:	Polyclonal
Conjugate:	This WDFY2 antibody is un-conjugated
Application:	Western Blotting (WB), ELISA, Immunofluorescence (IF)

Product Details

Immunogen:	Recombinant Human WD repeat and FYVE domain-containing protein 2 protein (2-114AA)
Isotype:	IgG
Cross-Reactivity:	Human
Purification:	>95%, Protein G purified

Target Details

Target:	WDFY2 (ZFYVE22)
Alternative Name:	WDFY2 (ZFYVE22 Products)
Background:	Background: Acts in an adapter protein-like fashion to mediate the interaction between the kinase PRKCZ and its substrate VAMP2 and increases the PRKCZ-dependent phosphorylation

Target Details

of VAMP2 (PubMed:17313651). Positively regulates adipocyte differentiation, by facilitating the phosphorylation and thus inactivation of the anti-adipogenic transcription factor FOXO1 by the kinase AKT1 (PubMed:18388859). Plays a role in endosomal control of AKT2 signaling, required for insulin-stimulated AKT2 phosphorylation and glucose uptake and insulin-stimulated phosphorylation of AKT2 substrates (By similarity). Participates in transferrin receptor endocytosis (PubMed:16873553).

Aliases: PROF antibody, Propeller-FYVE protein antibody, RP11 147H23.1 antibody, WD repeat and FYVE domain containing 2 antibody, WD repeat and FYVE domain-containing protein 2 antibody, WD40 and FYVE domain containing 2 antibody, WD40- and FYVE domain-containing protein 2 antibody, WDF2 antibody, Wdfy2 antibody, WDFY2_HUMAN antibody, ZFYVE22 antibody, Zinc finger FYVE domain-containing protein 22 antibody

UniProt: [Q96P53](#)

Application Details

Application Notes: Recommended dilution: WB:1:500-1:5000, IF:1:50-1:200,

Restrictions: For Research Use only

Handling

Format: Liquid

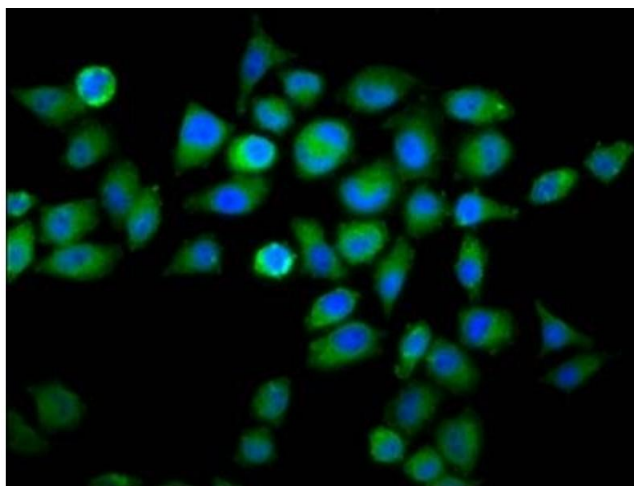
Buffer: Preservative: 0.03 % Proclin 300
Constituents: 50 % Glycerol, 0.01M PBS, pH 7.4

Preservative: ProClin

Precaution of Use: This product contains ProClin: a POISONOUS AND HAZARDOUS SUBSTANCE which should be handled by trained staff only.

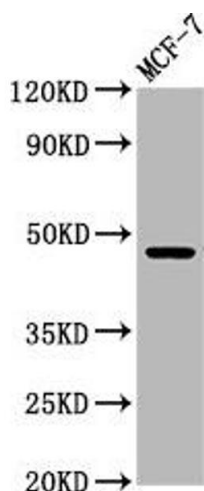
Storage: -20 °C, -80 °C

Storage Comment: Upon receipt, store at -20°C or -80°C. Avoid repeated freeze.



Immunofluorescence

Image 1. Immunofluorescence staining of HeLa cells with ABIN7175695 at 1:66, counter-stained with DAPI. The cells were fixed in 4% formaldehyde, permeabilized using 0.2% Triton X-100 and blocked in 10% normal Goat Serum. The cells were then incubated with the antibody overnight at 4°C. The secondary antibody was Alexa Fluor 488-conjugated AffiniPure Goat Anti-Rabbit IgG(H+L).



Western Blotting

Image 2. Western Blot Positive WB detected in: MCF-7 whole cell lysate All lanes: WDFY2 antibody at 5.6 µg/mL Secondary Goat polyclonal to rabbit IgG at 1/50000 dilution Predicted band size: 46 kDa Observed band size: 46 kDa