

Datasheet for ABIN7175699
anti-WDFY3 antibody (AA 1-100)

3 Images

[Go to Product page](#)

Overview

Quantity:	100 µg
Target:	WDFY3
Binding Specificity:	AA 1-100
Reactivity:	Human
Host:	Rabbit
Clonality:	Polyclonal
Conjugate:	This WDFY3 antibody is un-conjugated
Application:	ELISA, Immunofluorescence (IF), Immunohistochemistry (IHC)

Product Details

Immunogen:	Recombinant Human WD repeat and FYVE domain-containing protein 3 protein (1-100AA)
Isotype:	IgG
Cross-Reactivity:	Human
Purification:	>95%, Protein G purified

Target Details

Target:	WDFY3
Alternative Name:	WDFY3 (WDFY3 Products)
Background:	Background: Required for selective autophagy (aggrephagy) but not for autophagic degradation of bulk cytosol in response to starvation. Involved in the formation and degradation of

Target Details

cytoplasmic polyubiquitin-containing bodies (p62 bodies, ALIS/aggresome-like induced structures). May play a role as adaptor or scaffolding protein by promoting the association of the E3-like ligase ATG12-ATG5-ATG16L and LC3 to ubiquitinated target substrate. The association with GABARAP is required for its recruitment to LC3B-positive p62 bodies suggesting a role in targeting certain p62 structures for clearance. Involved in midbody ring degradation.

Aliases: WDFY3 antibody, KIAA0993 antibody, WD repeat and FYVE domain-containing protein 3 antibody, Autophagy-linked FYVE protein antibody, Alfz antibody

UniProt: [Q8IZQ1](#)

Application Details

Application Notes: Recommended dilution: IHC:1:20-1:200, IF:1:50-1:200,

Restrictions: For Research Use only

Handling

Format: Liquid

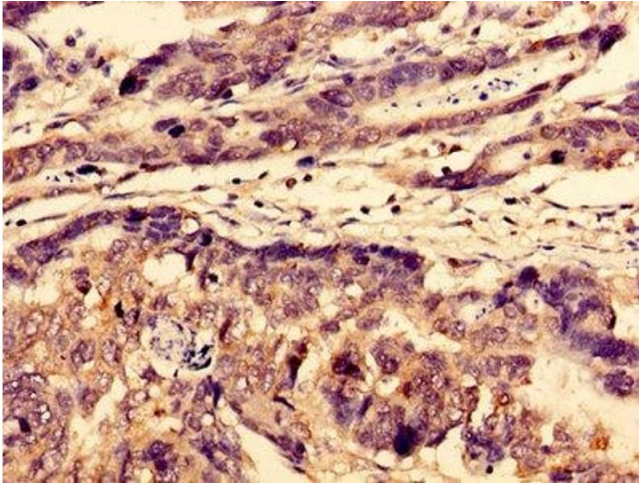
Buffer: Preservative: 0.03 % Proclin 300
Constituents: 50 % Glycerol, 0.01M PBS, pH 7.4

Preservative: ProClin

Precaution of Use: This product contains ProClin: a POISONOUS AND HAZARDOUS SUBSTANCE which should be handled by trained staff only.

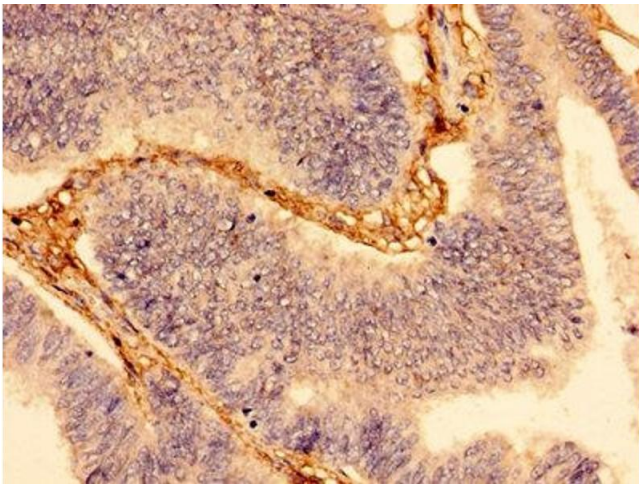
Storage: -20 °C,-80 °C

Storage Comment: Upon receipt, store at -20°C or -80°C. Avoid repeated freeze.



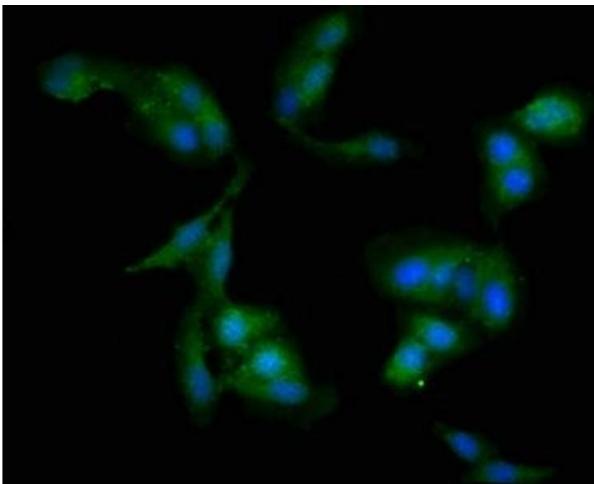
Immunohistochemistry

Image 1. Immunohistochemistry of paraffin-embedded human gastric cancer using ABIN7175699 at dilution of 1:100



Immunohistochemistry

Image 2. Immunohistochemistry of paraffin-embedded human colon cancer using ABIN7175699 at dilution of 1:100



Immunofluorescence

Image 3. Immunofluorescent analysis of HeLa cells using ABIN7175699 at dilution of 1:100 and Alexa Fluor 488-conjugated AffiniPure Goat Anti-Rabbit IgG(H+L)