

Datasheet for ABIN7175707  
**anti-WIP1 antibody (AA 187-446)**[Go to Product page](#)

## 2 Images

## Overview

Quantity:	100 µL
Target:	WIP1
Binding Specificity:	AA 187-446
Reactivity:	Human
Host:	Rabbit
Clonality:	Polyclonal
Conjugate:	This WIP1 antibody is un-conjugated
Application:	Western Blotting (WB), ELISA, Immunohistochemistry (IHC)

## Product Details

Immunogen:	Recombinant Human WD repeat domain phosphoinositide-interacting protein 1 protein (187-446AA)
Isotype:	IgG
Cross-Reactivity:	Human, Mouse
Purification:	Antigen Affinity Purified

## Target Details

Target:	WIP1
Alternative Name:	WIP1 ( <a href="#">WIP1 Products</a> )
Background:	Background: Plays an important role in autophagy and in particular starvation- and calcium-

## Target Details

mediated autophagy, as well as in mitophagy. Functions upstream of the ATG12-ATG5-ATG16L1 complex and LC3, and downstream of the ULK1 and PI3-kinase complexes. Involved in xenophagy of Staphylococcus aureus. Invading S.aureus cells become entrapped in autophagosome-like WIPI1 positive vesicles targeted for lysosomal degradation. Plays also a distinct role in controlling the transcription of melanogenic enzymes and melanosome maturation, a process that is distinct from starvation-induced autophagy. May also regulate the trafficking of proteins involved in the mannose-6-phosphate receptor (MPR) recycling pathway. Aliases: ATG 18 antibody, ATG18 antibody, Atg18 protein homolog antibody, ATG18A antibody, FLJ10055 antibody, WD repeat domain phosphoinositide interacting 1 antibody, WD repeat domain phosphoinositide interacting protein 1 antibody, WD repeat domain phosphoinositide-interacting protein 1 antibody, WD40 repeat protein interacting with phosphoinositides of 49 kDa antibody, WD40 repeat protein interacting with phospholinositides of 49 kDa antibody, WIPI 1 alpha antibody, WIPI 1 antibody, WIPI 49 antibody, WIPI 49 kDa antibody, WIPI-1 antibody, wipi1 antibody, WIPI1\_HUMAN antibody, WIPI49 antibody

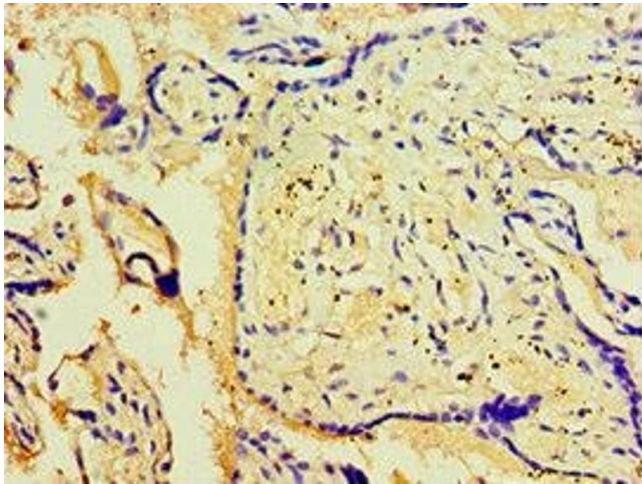
UniProt:	<a href="#">Q5MNZ9</a>
Pathways:	<a href="#">Nuclear Hormone Receptor Binding</a> , <a href="#">ER-Nucleus Signaling</a>

## Application Details

Application Notes:	Recommended dilution: WB:1:500-1:2000, IHC:1:20-1:200,
Restrictions:	For Research Use only

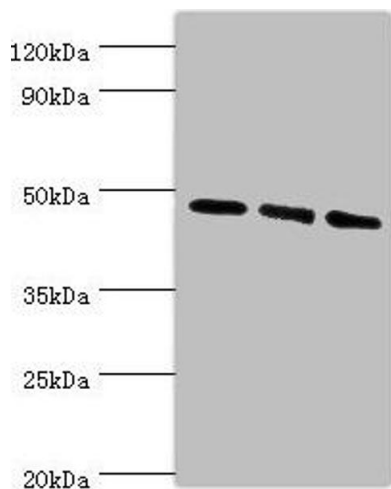
## Handling

Format:	Liquid
Buffer:	PBS with 0.02 % sodium azide, 50 % glycerol, pH 7.3.
Preservative:	Sodium azide
Precaution of Use:	This product contains Sodium azide: a POISONOUS AND HAZARDOUS SUBSTANCE which should be handled by trained staff only.
Storage:	-20 °C,-80 °C
Storage Comment:	Upon receipt, store at -20°C or -80°C. Avoid repeated freeze.



### Immunohistochemistry

**Image 1.** Immunohistochemistry of paraffin-embedded human placenta tissue using ABIN7175707 at dilution of 1:100



### Western Blotting

**Image 2.** Western blot All lanes: WIP1 antibody at 6 µg/mL  
Lane 1: 293T whole cell lysate Lane 2: NIH/3T3 whole cell lysate Lane 3: Mouse skeletal muscle tissue Secondary Goat polyclonal to rabbit IgG at 1/10000 dilution Predicted band size: 49 kDa Observed band size: 49 kDa