

Datasheet for ABIN7175710
anti-MORG1 antibody (AA 64-315)[Go to Product page](#)

2 Images

Overview

Quantity:	100 µL
Target:	MORG1 (wdr83)
Binding Specificity:	AA 64-315
Reactivity:	Human
Host:	Rabbit
Clonality:	Polyclonal
Conjugate:	This MORG1 antibody is un-conjugated
Application:	ELISA, Immunohistochemistry (IHC), Immunofluorescence (IF)

Product Details

Immunogen:	Recombinant Human WD repeat domain-containing protein 83 protein (64-315AA)
Isotype:	IgG
Cross-Reactivity:	Human
Purification:	>95%, Protein G purified

Target Details

Target:	MORG1 (wdr83)
Alternative Name:	WDR83 (wdr83 Products)
Background:	Background: Molecular scaffold protein for various multimeric protein complexes. Acts as a module in the assembly of a multicomponent scaffold for the ERK pathway, linking ERK

Target Details

responses to specific agonists. At low concentrations it enhances ERK activation, whereas high concentrations lead to the inhibition of ERK activation. Also involved in response to hypoxia by acting as a negative regulator of HIF1A/HIF-1-alpha via its interaction with EGLN3/PHD3. May promote degradation of HIF1A. May act by recruiting signaling complexes to a specific upstream activator (By similarity). May also be involved in pre-mRNA splicing.

Aliases: MAPK organizer 1 antibody, MGC4238 antibody, Mitogen activated protein kinase organizer 1 antibody, Mitogen-activated protein kinase organizer 1 antibody, MORG 1 antibody, WD repeat domain-containing protein 83 antibody, wdr83 antibody, WDR83_HUMAN antibody

UniProt: [Q9BRX9](#)

Application Details

Application Notes: Recommended dilution: IHC:1:200-1:500, IF:1:50-1:200,

Restrictions: For Research Use only

Handling

Format: Liquid

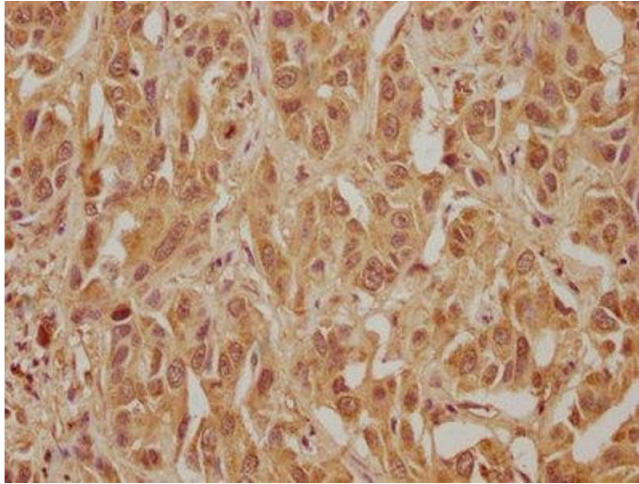
Buffer: Preservative: 0.03 % Proclin 300
Constituents: 50 % Glycerol, 0.01M PBS, pH 7.4

Preservative: ProClin

Precaution of Use: This product contains ProClin: a POISONOUS AND HAZARDOUS SUBSTANCE which should be handled by trained staff only.

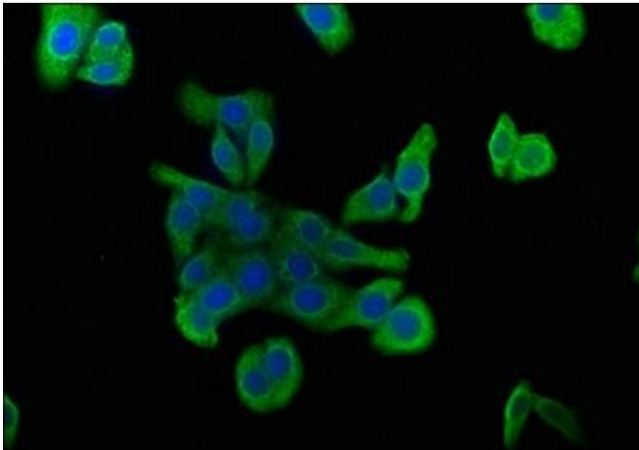
Storage: -20 °C,-80 °C

Storage Comment: Upon receipt, store at -20°C or -80°C. Avoid repeated freeze.



Immunohistochemistry

Image 1. IHC image of ABIN7175710 diluted at 1:300 and staining in paraffin-embedded human liver cancer performed on a Leica Bond™ system. After dewaxing and hydration, antigen retrieval was mediated by high pressure in a citrate buffer (pH 6.0). Section was blocked with 10% normal goat serum 30min at RT. Then primary antibody (1% BSA) was incubated at 4°C overnight. The primary is detected by a biotinylated secondary antibody and visualized using an HRP conjugated SP system.



Immunofluorescence

Image 2. Immunofluorescence staining of HepG2 cells with ABIN7175710 at 1:100, counter-stained with DAPI. The cells were fixed in 4% formaldehyde, permeabilized using 0.2% Triton X-100 and blocked in 10% normal Goat Serum. The cells were then incubated with the antibody overnight at 4°C. The secondary antibody was Alexa Fluor 488-conjugated AffiniPure Goat Anti-Rabbit IgG(H+L).