



[Go to Product page](#)

Datasheet for ABIN7175714  
**anti-WDFY4 antibody (AA 1-322)**

2 Images

### Overview

Quantity:	100 µg
Target:	WDFY4
Binding Specificity:	AA 1-322
Reactivity:	Human
Host:	Rabbit
Clonality:	Polyclonal
Conjugate:	This WDFY4 antibody is un-conjugated
Application:	ELISA, Immunohistochemistry (IHC)

### Product Details

Immunogen:	Recombinant Human WD repeat- and FYVE domain-containing protein 4 protein (1-322AA)
Isotype:	IgG
Cross-Reactivity:	Human
Purification:	>95%, Protein G purified

### Target Details

Target:	WDFY4
Alternative Name:	WDFY4 ( <a href="#">WDFY4 Products</a> )
Background:	Background: endomembrane system, extrinsic component of membrane, phospholipid binding Aliases: WDFY4 antibody, C10orf64 antibody, KIAA1607WD repeat- and FYVE domain-

## Target Details

containing protein 4 antibody

UniProt: [Q6ZS81](#)

## Application Details

Application Notes: Recommended dilution: IHC:1:20-1:200,

Restrictions: For Research Use only

## Handling

Format: Liquid

Buffer: Preservative: 0.03 % Proclin 300  
Constituents: 50 % Glycerol, 0.01M PBS, PH 7.4

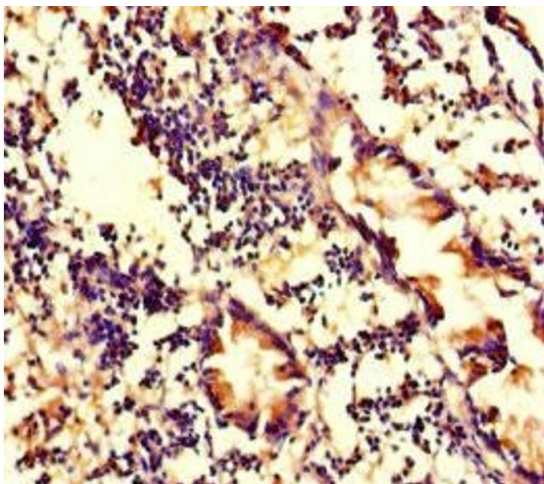
Preservative: ProClin

Precaution of Use: This product contains ProClin: a POISONOUS AND HAZARDOUS SUBSTANCE which should be handled by trained staff only.

Storage: -20 °C,-80 °C

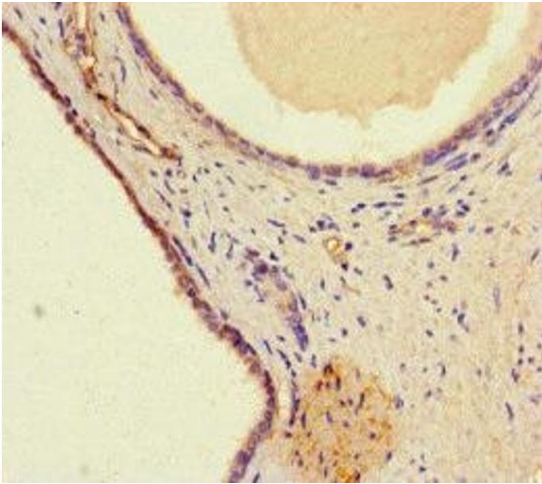
Storage Comment: Upon receipt, store at -20°C or -80°C. Avoid repeated freeze.

## Images



### Immunohistochemistry

**Image 1.** Immunohistochemistry of paraffin-embedded human appendix tissue using ABIN7175714 at dilution of 1:100



### Immunohistochemistry

**Image 2.** Immunohistochemistry of paraffin-embedded human prostate cancer using ABIN7175714 at dilution of 1:100