

Datasheet for ABIN7175718  
**anti-WDPCP antibody (AA 621-737)**[Go to Product page](#)

## 2 Images

## Overview

Quantity:	100 µg
Target:	WDPCP
Binding Specificity:	AA 621-737
Reactivity:	Human
Host:	Rabbit
Clonality:	Polyclonal
Conjugate:	This WDPCP antibody is un-conjugated
Application:	ELISA, Immunohistochemistry (IHC), Immunofluorescence (IF)

## Product Details

Immunogen:	Recombinant Human WD repeat-containing and planar cell polarity effector protein fritz homolog protein (621-737AA)
Isotype:	IgG
Cross-Reactivity:	Human
Purification:	>95%, Protein G purified

## Target Details

Target:	WDPCP
Alternative Name:	WDPCP ( <a href="#">WDPCP Products</a> )
Background:	Background: Probable effector of the planar cell polarity signaling pathway which regulates the

## Target Details

septin cytoskeleton in both ciliogenesis and collective cell movements. Together with FUZ and WDPCP proposed to function as core component of the CPLANE (ciliogenesis and planar polarity effectors) complex involved in the recruitment of peripheral IFT-A proteins to basal bodies (By similarity).

Aliases: Bardet-Biedl syndrome 15 protein antibody, Chromosome 2 open reading frame 86 antibody, DKFZp686C12204 antibody, Fritz antibody, FRITZ\_HUMAN antibody, hFrtz antibody, WD repeat containing protein C2orf86 antibody, WD repeat-containing and planar cell polarity effector protein antibody, WD repeat-containing and planar cell polarity effector protein fritz homolog antibody, WDPCP antibody

UniProt: [O95876](#)

## Application Details

Application Notes: Recommended dilution: IHC:1:20-1:200, IF:1:50-1:200,

Restrictions: For Research Use only

## Handling

Format: Liquid

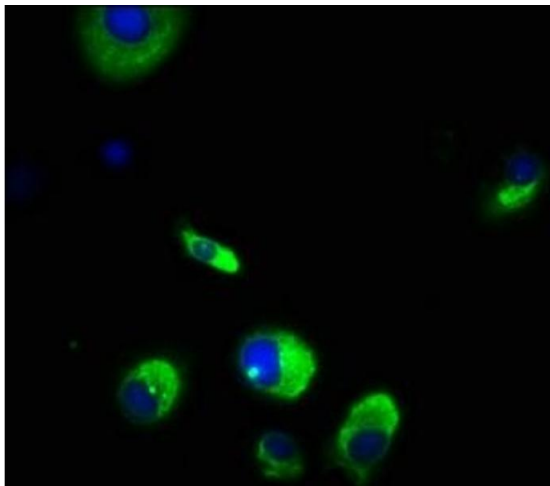
Buffer: Preservative: 0.03 % Proclin 300  
Constituents: 50 % Glycerol, 0.01M PBS, pH 7.4

Preservative: ProClin

Precaution of Use: This product contains ProClin: a POISONOUS AND HAZARDOUS SUBSTANCE which should be handled by trained staff only.

Storage: -20 °C,-80 °C

Storage Comment: Upon receipt, store at -20°C or -80°C. Avoid repeated freeze.



### Immunofluorescence

**Image 1.** Immunofluorescence staining of MCF-7 cells with ABIN7175718 at 1:166, counter-stained with DAPI. The cells were fixed in 4% formaldehyde, permeabilized using 0.2% Triton X-100 and blocked in 10% normal Goat Serum. The cells were then incubated with the antibody overnight at 4°C. The secondary antibody was Alexa Fluor 488-conjugated AffiniPure Goat Anti-Rabbit IgG(H+L).



### Immunohistochemistry

**Image 2.** Immunohistochemistry of paraffin-embedded human brain tissue using ABIN7175718 at dilution of 1:100