



[Go to Product page](#)

Datasheet for ABIN7175722  
**anti-WDR13 antibody (AA 14-156)**

1 Image

### Overview

Quantity:	100 µg
Target:	WDR13
Binding Specificity:	AA 14-156
Reactivity:	Human
Host:	Rabbit
Clonality:	Polyclonal
Conjugate:	This WDR13 antibody is un-conjugated
Application:	ELISA, Immunohistochemistry (IHC)

### Product Details

Immunogen:	Recombinant Human WD repeat-containing protein 13 protein (14-156AA)
Isotype:	IgG
Cross-Reactivity:	Human
Purification:	>95%, Protein G purified

### Target Details

Target:	WDR13
Alternative Name:	WDR13 ( <a href="#">WDR13 Products</a> )
Background:	Background: microtubule organizing center, nucleoplasm, plasma membrane Aliases: DKFZp779C2057 antibody, FLJ20563 antibody, located at OATL1 antibody, MG21

## Target Details

antibody, WD repeat domain 13 antibody, WD repeat-containing protein 13 antibody, WDR13 antibody, WDR13\_HUMAN antibody

UniProt: [Q9H1Z4](#)

## Application Details

Application Notes: Recommended dilution: IHC:1:200-1:500,

Restrictions: For Research Use only

## Handling

Format: Liquid

Buffer: Preservative: 0.03 % Proclin 300  
Constituents: 50 % Glycerol, 0.01M PBS, pH 7.4

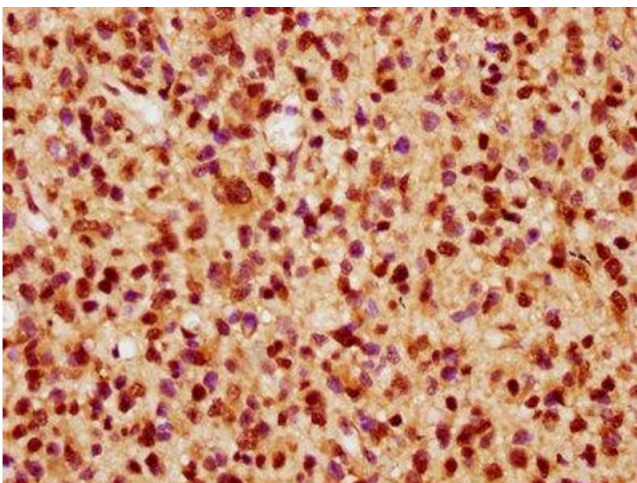
Preservative: ProClin

Precaution of Use: This product contains ProClin: a POISONOUS AND HAZARDOUS SUBSTANCE which should be handled by trained staff only.

Storage: -20 °C,-80 °C

Storage Comment: Upon receipt, store at -20°C or -80°C. Avoid repeated freeze.

## Images



### Immunohistochemistry

**Image 1.** IHC image of ABIN7175722 diluted at 1:300 and staining in paraffin-embedded human glioma performed on a Leica Bond™ system. After dewaxing and hydration, antigen retrieval was mediated by high pressure in a citrate buffer (pH 6.0). Section was blocked with 10% normal goat serum 30min at RT. Then primary antibody (1% BSA) was incubated at 4°C overnight. The primary is detected by a biotinylated secondary antibody and visualized using an HRP conjugated SP system.