



[Go to Product page](#)

Datasheet for ABIN7175755  
**anti-WDR47 antibody (AA 350-600)**

2 Images

Overview

Quantity:	100 µL
Target:	WDR47
Binding Specificity:	AA 350-600
Reactivity:	Human
Host:	Rabbit
Clonality:	Polyclonal
Conjugate:	This WDR47 antibody is un-conjugated
Application:	ELISA, Immunohistochemistry (IHC)

Product Details

Immunogen:	Recombinant Human WD repeat-containing protein 47 protein (350-600AA)
Isotype:	IgG
Cross-Reactivity:	Human
Purification:	Antigen Affinity Purified

Target Details

Target:	WDR47
Alternative Name:	WDR47 ( <a href="#">WDR47 Products</a> )
Background:	RGD1309181 antibody, WD repeat containing protein 47 antibody, WD repeat domain 47 antibody, WD repeat-containing protein 47 antibody, Wdr47 antibody, WDR47_HUMAN antibody

## Target Details

---

UniProt: [O94967](#)

## Application Details

---

Application Notes: Recommended dilution: IHC:1:20-1:200,

Restrictions: For Research Use only

## Handling

---

Format: Liquid

Buffer: PBS with 0.02 % sodium azide, 50 % glycerol, pH 7.3.

Preservative: Sodium azide

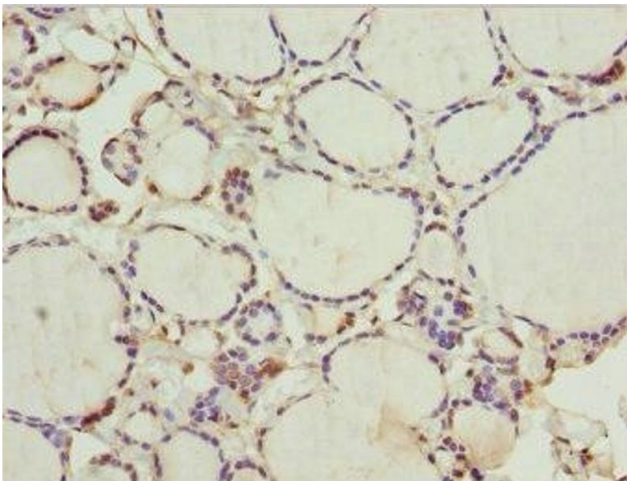
Precaution of Use: This product contains Sodium azide: a POISONOUS AND HAZARDOUS SUBSTANCE which should be handled by trained staff only.

Storage: -20 °C,-80 °C

Storage Comment: Upon receipt, store at -20°C or -80°C. Avoid repeated freeze.

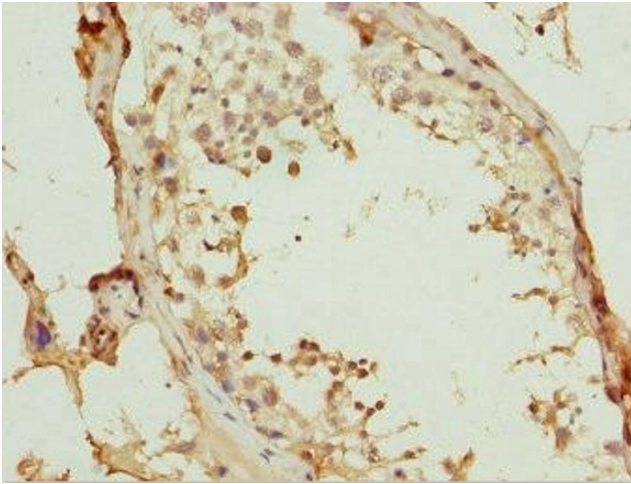
## Images

---



### Immunohistochemistry

**Image 1.** Immunohistochemistry of paraffin-embedded human thyroid tissue using ABIN7175755 at dilution of 1:100



### Immunohistochemistry

**Image 2.** Immunohistochemistry of paraffin-embedded human testis tissue using ABIN7175755 at dilution of 1:100