

Datasheet for ABIN7175818
anti-WT1 antibody (AA 1-449)



[Go to Product page](#)

2 Images

Overview

Quantity:	100 µg
Target:	WT1
Binding Specificity:	AA 1-449
Reactivity:	Human
Host:	Rabbit
Clonality:	Polyclonal
Conjugate:	This WT1 antibody is un-conjugated
Application:	Immunohistochemistry (IHC), ELISA

Product Details

Immunogen:	Recombinant Human Wilms tumor protein (1-449AA)
Isotype:	IgG
Cross-Reactivity:	Human
Purification:	>95%, Protein G purified

Target Details

Target:	WT1
Alternative Name:	WT1 (WT1 Products)
Background:	Background: Transcription factor that plays an important role in cellular development and cell survival. Regulates the expression of numerous target genes, including EPO. Plays an essential

Target Details

role for development of the urogenital system. Recognizes and binds to the DNA sequence 5\'-CGCCCCCGC-3\'. It has a tumor suppressor as well as an oncogenic role in tumor formation. Function may be isoform-specific: isoforms lacking the KTS motif may act as transcription factors. Isoforms containing the KTS motif may bind mRNA and play a role in mRNA metabolism or splicing. Isoform 1 has lower affinity for DNA, and can bind RNA.

Aliases: WIT 2 antibody, WT 1 antibody, AWT1 antibody, FWT1 antibody, GUD antibody, NPHS4 antibody, WAGR antibody, Wilms tumor 1 antibody, Wilms Tumor antibody, Wilms tumor protein antibody, Wilms' tumor gene antibody, Wilms' tumor protein antibody, WIT2 antibody, WT antibody, WT1 antibody, WT1_HUMAN antibody, WT33 antibody

UniProt: [P19544](#)

Pathways: [Tube Formation](#)

Application Details

Application Notes: Recommended dilution: IHC:1:20-1:200,

Restrictions: For Research Use only

Handling

Format: Liquid

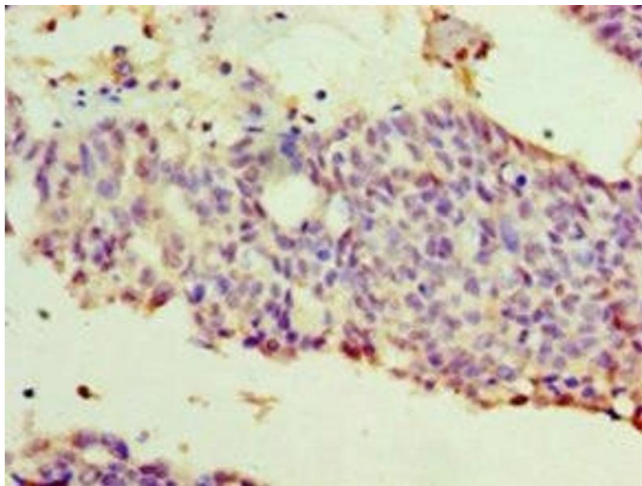
Buffer: Preservative: 0.03 % Proclin 300
Constituents: 50 % Glycerol, 0.01M PBS, PH 7.4

Preservative: ProClin

Precaution of Use: This product contains ProClin: a POISONOUS AND HAZARDOUS SUBSTANCE which should be handled by trained staff only.

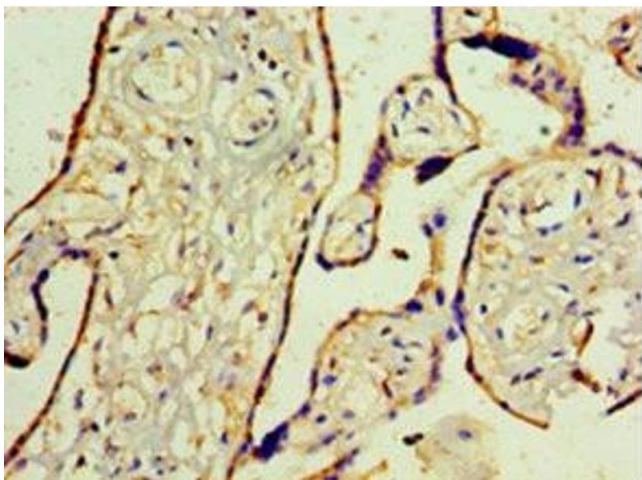
Storage: -20 °C,-80 °C

Storage Comment: Upon receipt, store at -20°C or -80°C. Avoid repeated freeze.



Immunohistochemistry

Image 1. Immunohistochemistry of paraffin-embedded human endometrial cancer using ABIN7175818 at dilution of 1:100



Immunohistochemistry

Image 2. Immunohistochemistry of paraffin-embedded human placenta tissue using ABIN7175818 at dilution of 1:100