

Datasheet for ABIN7175822
anti-WAPAL antibody (AA 1037-1190)[Go to Product page](#)

3 Images

Overview

| | |
|----------------------|--|
| Quantity: | 100 µg |
| Target: | WAPAL |
| Binding Specificity: | AA 1037-1190 |
| Reactivity: | Human |
| Host: | Rabbit |
| Clonality: | Polyclonal |
| Conjugate: | This WAPAL antibody is un-conjugated |
| Application: | ELISA, Western Blotting (WB), Immunohistochemistry (IHC) |

Product Details

| | |
|-------------------|--|
| Immunogen: | Recombinant Human Wings apart-like protein homolog protein (1037-1190AA) |
| Isotype: | IgG |
| Cross-Reactivity: | Human |
| Purification: | >95%, Protein G purified |

Target Details

| | |
|-------------------|--|
| Target: | WAPAL |
| Alternative Name: | WAPL (WAPAL Products) |
| Background: | Background: Regulator of sister chromatid cohesion in mitosis which negatively regulates cohesin association with chromatin. Involved in both sister chromatid cohesion during |

Target Details

interphase and sister-chromatid resolution during early stages of mitosis. Couples DNA replication to sister chromatid cohesion. Cohesion ensures that chromosome partitioning is accurate in both meiotic and mitotic cells and plays an important role in DNA repair.

Aliases: FOE antibody, Friend of EBNA2 (Epstein Barr virus nuclear protein 2) antibody, Friend of EBNA2 protein antibody, KIAA0261 antibody, OTTHUMP00000020004 antibody, WAPAL antibody, WAPL antibody, WAPL_HUMAN antibody, Wings apart like homolog antibody, Wings apart like homolog (Drosophila) antibody, Wings apart-like protein homolog antibody

UniProt: [Q7Z5K2](#)

Pathways: [Chromatin Binding](#)

Application Details

Application Notes: Recommended dilution: WB:1:500-1:5000, IHC:1:200-1:500,

Restrictions: For Research Use only

Handling

Format: Liquid

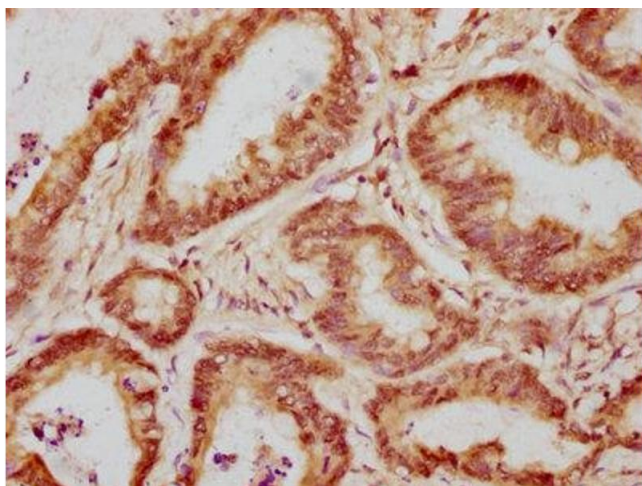
Buffer: Preservative: 0.03 % Proclin 300
Constituents: 50 % Glycerol, 0.01M PBS, PH 7.4

Preservative: ProClin

Precaution of Use: This product contains ProClin: a POISONOUS AND HAZARDOUS SUBSTANCE which should be handled by trained staff only.

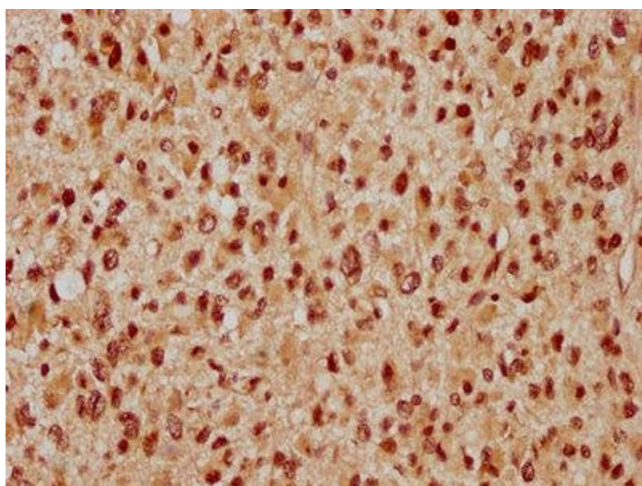
Storage: -20 °C,-80 °C

Storage Comment: Upon receipt, store at -20°C or -80°C. Avoid repeated freeze.



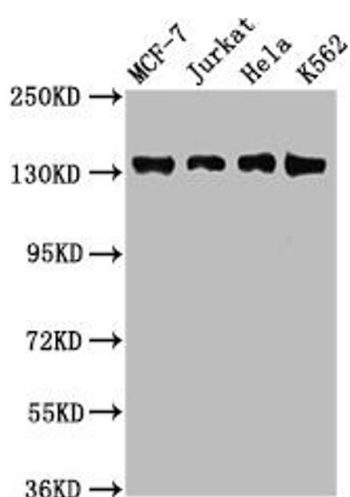
Immunohistochemistry

Image 1. IHC image of ABIN7175822 diluted at 1:300 and staining in paraffin-embedded human colon cancer performed on a Leica Bond™ system. After dewaxing and hydration, antigen retrieval was mediated by high pressure in a citrate buffer (pH 6.0). Section was blocked with 10% normal goat serum 30min at RT. Then primary antibody (1% BSA) was incubated at 4°C overnight. The primary is detected by a biotinylated secondary antibody and visualized using an HRP conjugated SP system.



Immunohistochemistry

Image 2. IHC image of ABIN7175822 diluted at 1:300 and staining in paraffin-embedded human glioma performed on a Leica Bond™ system. After dewaxing and hydration, antigen retrieval was mediated by high pressure in a citrate buffer (pH 6.0). Section was blocked with 10% normal goat serum 30min at RT. Then primary antibody (1% BSA) was incubated at 4°C overnight. The primary is detected by a biotinylated secondary antibody and visualized using an HRP conjugated SP system.



Western Blotting

Image 3. Western Blot Positive WB detected in: MCF-7 whole cell lysate, Jurkat whole cell lysate, HeLa whole cell lysate, K562 whole cell lysate. All lanes: WAPL antibody at 2.5 µg/mL. Secondary Goat polyclonal to rabbit IgG at 1/50000 dilution. Predicted band size: 133, 138, 143 kDa. Observed band size: 133 kDa.