

Datasheet for ABIN7175826  
**anti-WASP antibody (AA 145-265)**

## 3 Images

[Go to Product page](#)

## Overview

Quantity:	100 µg
Target:	WASP (WAS)
Binding Specificity:	AA 145-265
Reactivity:	Human
Host:	Rabbit
Clonality:	Polyclonal
Conjugate:	This WASP antibody is un-conjugated
Application:	Western Blotting (WB), ELISA, Immunohistochemistry (IHC), Immunofluorescence (IF)

## Product Details

Immunogen:	Recombinant Human Wiskott-Aldrich syndrome protein (145-265AA)
Isotype:	IgG
Cross-Reactivity:	Human
Purification:	>95%, Protein G purified

## Target Details

Target:	WASP (WAS)
Alternative Name:	WAS ( <a href="#">WAS Products</a> )
Background:	Background: Effector protein for Rho-type GTPases. Regulates actin filament reorganization via its interaction with the Arp2/3 complex. Important for efficient actin polymerization. Possible

## Target Details

regulator of lymphocyte and platelet function. Mediates actin filament reorganization and the formation of actin pedestals upon infection by pathogenic bacteria.

Aliases: Eczema thrombocytopenia antibody, IMD2 antibody, SCNX antibody, THC antibody, THC1 antibody, Thrombocytopenia 1 (X linked) antibody, U42471 antibody, Was antibody, WASp antibody, WASP\_HUMAN antibody, Wiskott Aldrich syndrome (eczema thrombocytopenia) antibody, Wiskott Aldrich syndrome antibody, Wiskott Aldrich syndrome protein antibody, Wiskott-Aldrich syndrome protein antibody

UniProt: [P42768](#)

## Application Details

Application Notes: Recommended dilution: WB:1:500-1:5000, IHC:1:200-1:500, IF:1:50-1:200,

Restrictions: For Research Use only

## Handling

Format: Liquid

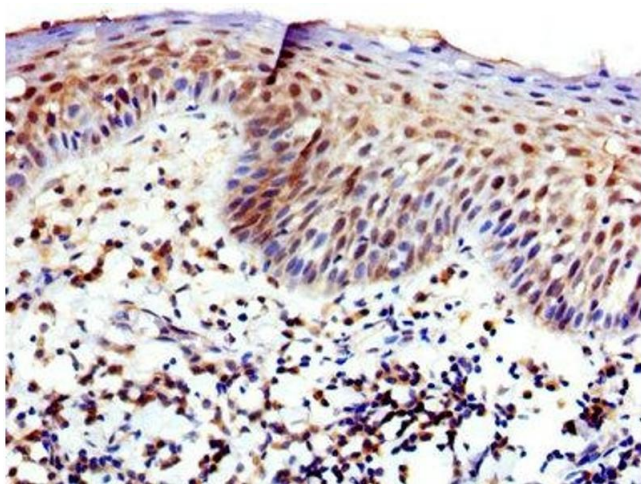
Buffer: Preservative: 0.03 % Proclin 300  
Constituents: 50 % Glycerol, 0.01M PBS, pH 7.4

Preservative: ProClin

Precaution of Use: This product contains ProClin: a POISONOUS AND HAZARDOUS SUBSTANCE which should be handled by trained staff only.

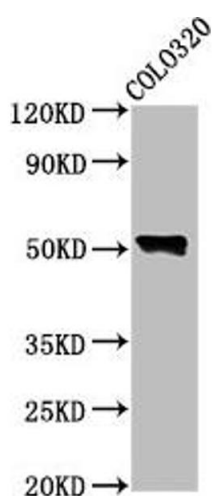
Storage: -20 °C, -80 °C

Storage Comment: Upon receipt, store at -20°C or -80°C. Avoid repeated freeze.



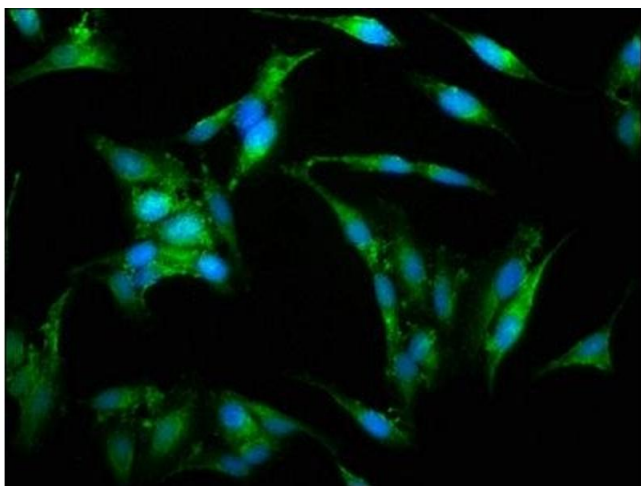
### Immunohistochemistry

**Image 1.** IHC image of ABIN7175826 diluted at 1:400 and staining in paraffin-embedded human tonsil tissue performed on a Leica Bond™ system. After dewaxing and hydration, antigen retrieval was mediated by high pressure in a citrate buffer (pH 6.0). Section was blocked with 10% normal goat serum 30min at RT. Then primary antibody (1% BSA) was incubated at 4°C overnight. The primary is detected by a biotinylated secondary antibody and visualized using an HRP conjugated SP system.



### Western Blotting

**Image 2.** Western Blot Positive WB detected in: Colo320 whole cell lysate All lanes: WAS antibody at 4.6 µg/mL Secondary Goat polyclonal to rabbit IgG at 1/50000 dilution Predicted band size: 53 kDa Observed band size: 53 kDa



### Immunofluorescence

**Image 3.** Immunofluorescence staining of HeLa cells with ABIN7175826 at 1:150, counter-stained with DAPI. The cells were fixed in 4% formaldehyde, permeabilized using 0.2% Triton X-100 and blocked in 10% normal Goat Serum. The cells were then incubated with the antibody overnight at 4°C. The secondary antibody was Alexa Fluor 488-conjugated AffiniPure Goat Anti-Rabbit IgG(H+L).