

Datasheet for ABIN7175838
anti-WASF3 antibody (AA 368-502)[Go to Product page](#)

4 Images

Overview

Quantity:	100 µg
Target:	WASF3
Binding Specificity:	AA 368-502
Reactivity:	Human
Host:	Rabbit
Clonality:	Polyclonal
Conjugate:	This WASF3 antibody is un-conjugated
Application:	Western Blotting (WB), ELISA, Immunohistochemistry (IHC), Immunofluorescence (IF)

Product Details

Immunogen:	Recombinant Human Wiskott-Aldrich syndrome protein family member 3 protein (368-502AA)
Isotype:	IgG
Cross-Reactivity:	Human
Purification:	>95%, Protein G purified

Target Details

Target:	WASF3
Alternative Name:	WASF3 (WASF3 Products)
Background:	Background: Downstream effector molecules involved in the transmission of signals from tyrosine kinase receptors and small GTPases to the actin cytoskeleton. Plays a role in the

Target Details

regulation of cell morphology and cytoskeletal organization. Required in the control of cell shape.

Aliases: KIAA0900 antibody, Protein WAVE-3 antibody, Protein WAVE3 antibody, SCAR3 antibody, Verprolin homology domain containing protein 3 antibody, Verprolin homology domain-containing protein 3 antibody, WASF3 antibody, WASF3_HUMAN antibody, WASP family protein member 3 antibody, WAVE3 antibody, Wiskott Aldrich syndrome protein family member 3 antibody, Wiskott-Aldrich syndrome protein family member 3 antibody

UniProt: [Q9UPY6](#)

Pathways: [RTK Signaling](#)

Application Details

Application Notes: Recommended dilution: WB:1:500-1:5000, IHC:1:20-1:200, IF:1:20-1:200,

Restrictions: For Research Use only

Handling

Format: Liquid

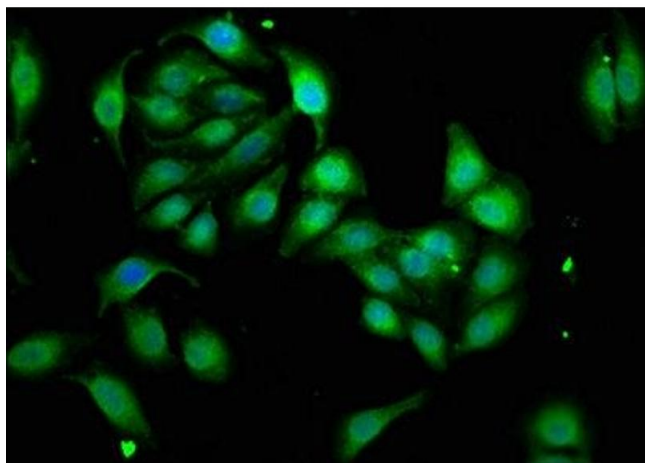
Buffer: Preservative: 0.03 % Proclin 300
Constituents: 50 % Glycerol, 0.01M PBS, pH 7.4

Preservative: ProClin

Precaution of Use: This product contains ProClin: a POISONOUS AND HAZARDOUS SUBSTANCE which should be handled by trained staff only.

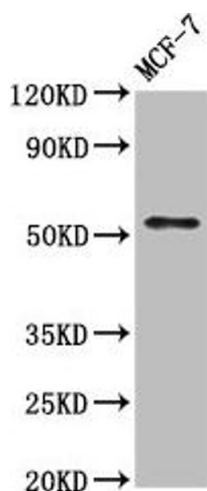
Storage: -20 °C,-80 °C

Storage Comment: Upon receipt, store at -20°C or -80°C. Avoid repeated freeze.



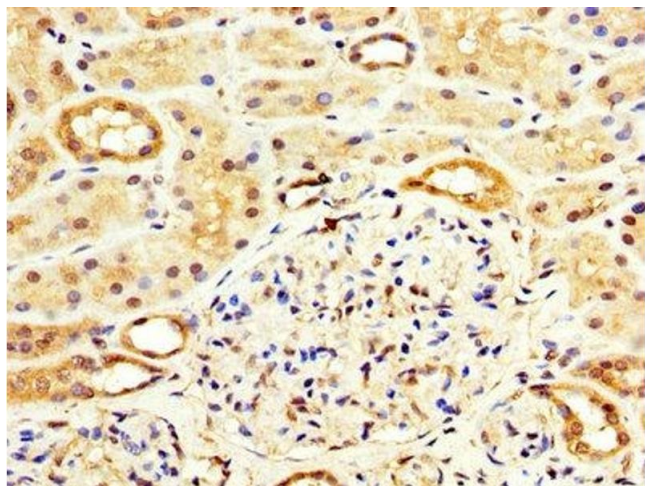
Immunofluorescence

Image 1. Immunofluorescence staining of A549 cells with ABIN7175838 at 1:33, counter-stained with DAPI. The cells were fixed in 4% formaldehyde, permeabilized using 0.2% Triton X-100 and blocked in 10% normal Goat Serum. The cells were then incubated with the antibody overnight at 4°C. The secondary antibody was Alexa Fluor 488-conjugated AffiniPure Goat Anti-Rabbit IgG(H+L).



Western Blotting

Image 2. Western Blot Positive WB detected in: MCF-7 whole cell lysate All lanes: WASF3 antibody at 7 µg/mL Secondary Goat polyclonal to rabbit IgG at 1/50000 dilution Predicted band size: 56 kDa Observed band size: 56 kDa



Immunohistochemistry

Image 3. IHC image of ABIN7175838 diluted at 1:100 and staining in paraffin-embedded human kidney tissue performed on a Leica Bond™ system. After dewaxing and hydration, antigen retrieval was mediated by high pressure in a citrate buffer (pH 6.0). Section was blocked with 10% normal goat serum 30min at RT. Then primary antibody (1% BSA) was incubated at 4°C overnight. The primary is detected by a biotinylated secondary antibody and visualized using an HRP conjugated SP system.

Please check the [product details page](#) for more images. Overall 4 images are available for ABIN7175838.