



[Go to Product page](#)

Datasheet for ABIN7175846
anti-WISP1 antibody (AA 130-251)

4 Images

Overview

Quantity:	100 µg
Target:	WISP1
Binding Specificity:	AA 130-251
Reactivity:	Human
Host:	Rabbit
Clonality:	Polyclonal
Conjugate:	This WISP1 antibody is un-conjugated
Application:	Western Blotting (WB), ELISA, Immunohistochemistry (IHC), Immunofluorescence (IF)

Product Details

Immunogen:	Recombinant Human WNT1-inducible-signaling pathway protein 1 protein (130-251AA)
Isotype:	IgG
Cross-Reactivity:	Human, Mouse
Purification:	>95%, Protein G purified

Target Details

Target:	WISP1
Alternative Name:	WISP1 (WISP1 Products)
Background:	Background: Downstream regulator in the Wnt/Frizzled-signaling pathway. Associated with cell survival. Attenuates p53-mediated apoptosis in response to DNA damage through activation of

Target Details

AKT kinase. Up-regulates the anti-apoptotic Bcl-X(L) protein. Adheres to skin and melanoma fibroblasts. In vitro binding to skin fibroblasts occurs through the proteoglycans, decorin and biglycan.

Aliases: CCN4 antibody, WISP1 antibody, CCN family member 4 antibody, WNT1-inducible-signaling pathway protein 1 antibody, WISP-1 antibody, Wnt-1-induced secreted protein antibody

UniProt: [O95388](#)

Pathways: [WNT Signaling](#), [Growth Factor Binding](#)

Application Details

Application Notes: Recommended dilution: WB:1:1000-1:5000, IHC:1:20-1:200, IF:1:50-1:200,

Restrictions: For Research Use only

Handling

Format: Liquid

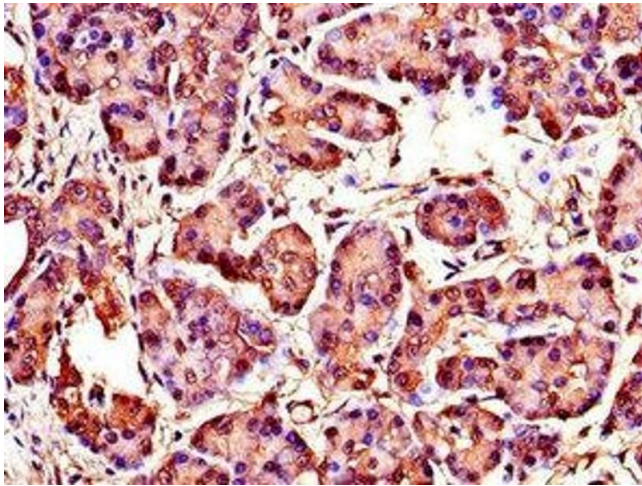
Buffer: Preservative: 0.03 % Proclin 300
Constituents: 50 % Glycerol, 0.01M PBS, PH 7.4

Preservative: ProClin

Precaution of Use: This product contains ProClin: a POISONOUS AND HAZARDOUS SUBSTANCE which should be handled by trained staff only.

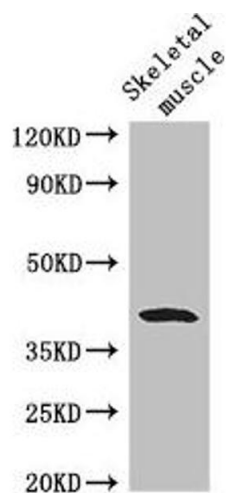
Storage: -20 °C,-80 °C

Storage Comment: Upon receipt, store at -20°C or -80°C. Avoid repeated freeze.



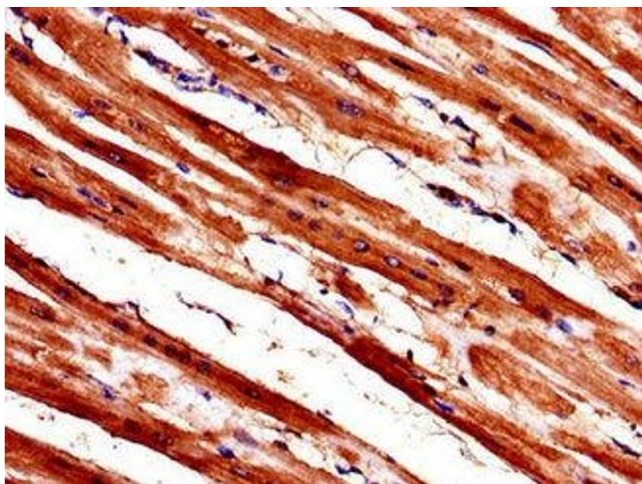
Immunohistochemistry

Image 1. Immunohistochemistry of paraffin-embedded human pancreatic tissue using ABIN7175846 at dilution of 1:100



Western Blotting

Image 2. Western Blot Positive WB detected in: Mouse skeletal muscle tissue All lanes: WISP1 antibody at 2.8 μ g/mL Secondary Goat polyclonal to rabbit IgG at 1/50000 dilution Predicted band size: 41, 31, 14, 17, 22 kDa Observed band size: 41 kDa



Immunohistochemistry

Image 3. Immunohistochemistry of paraffin-embedded human heart tissue using ABIN7175846 at dilution of 1:100

Please check the [product details page](#) for more images. Overall 4 images are available for ABIN7175846.