

Datasheet for ABIN7175850  
**anti-WISP2 antibody (AA 1-250)**[Go to Product page](#)

## 2 Images

## Overview

Quantity:	100 µL
Target:	WISP2
Binding Specificity:	AA 1-250
Reactivity:	Human
Host:	Rabbit
Clonality:	Polyclonal
Conjugate:	This WISP2 antibody is un-conjugated
Application:	Immunohistochemistry (IHC), ELISA

## Product Details

Immunogen:	Recombinant Human WNT1-inducible-signaling pathway protein 2 protein (1-250AA)
Isotype:	IgG
Cross-Reactivity:	Human
Purification:	Antigen Affinity Purified

## Target Details

Target:	WISP2
Alternative Name:	WISP2 ( <a href="#">WISP2 Products</a> )
Background:	Background: May play an important role in modulating bone turnover. Promotes the adhesion of osteoblast cells and inhibits the binding of fibrinogen to integrin receptors. In addition,

## Target Details

inhibits osteocalcin production.

Aliases: CCN family member 5 antibody, CCN5 antibody, Connective tissue growth factor like protein antibody, Connective tissue growth factor related protein 58 antibody, Connective tissue growth factor-like protein antibody, Connective tissue growth factor-related protein 58 antibody, CT58 antibody, CTGF L antibody, CTGF-L antibody, WISP 2 antibody, WISP-2 antibody, Wisp2 antibody, WISP2\_HUMAN antibody, Wnt 1 signaling pathway protein 2 antibody, WNT1 inducible signaling pathway protein 2 antibody, WNT1-inducible-signaling pathway protein 2 antibody

UniProt: [O76076](#)

Pathways: [WNT Signaling](#), [Growth Factor Binding](#)

## Application Details

Application Notes: Recommended dilution: IHC:1:20-1:200,

Restrictions: For Research Use only

## Handling

Format: Liquid

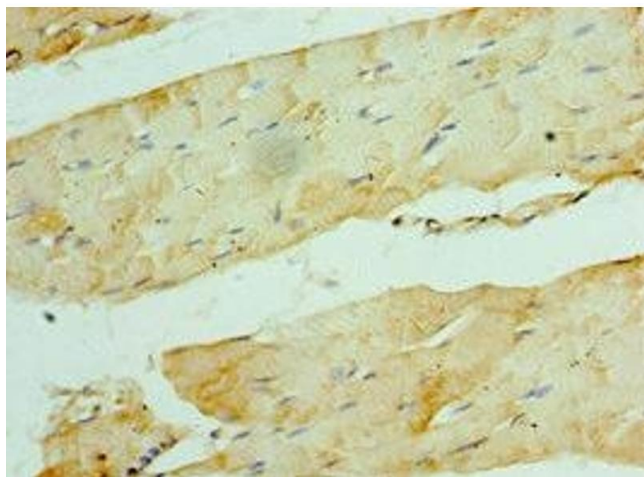
Buffer: PBS with 0.02 % sodium azide, 50 % glycerol, pH 7.3.

Preservative: Sodium azide

Precaution of Use: This product contains Sodium azide: a POISONOUS AND HAZARDOUS SUBSTANCE which should be handled by trained staff only.

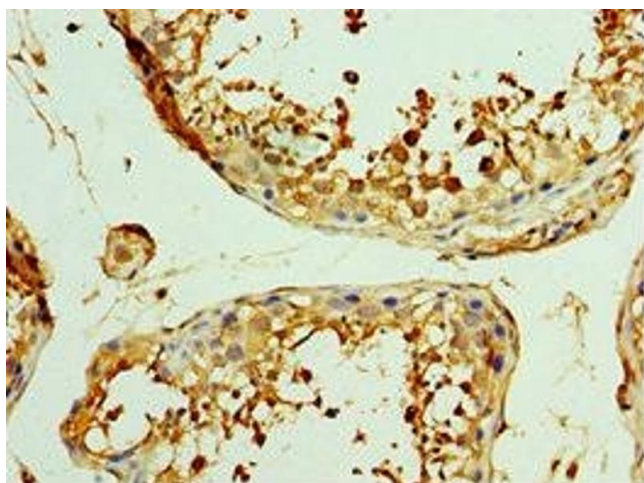
Storage: -20 °C,-80 °C

Storage Comment: Upon receipt, store at -20°C or -80°C. Avoid repeated freeze.



#### Immunohistochemistry

**Image 1.** Immunohistochemistry of paraffin-embedded human skeletal muscle tissue using ABIN7175850 at dilution of 1:100



#### Immunohistochemistry

**Image 2.** Immunohistochemistry of paraffin-embedded human testis tissue using ABIN7175850 at dilution of 1:100