

Datasheet for ABIN7175883  
**anti-XBP1 antibody (AA 1-167)**

## 3 Images

[Go to Product page](#)

## Overview

Quantity:	100 µg
Target:	XBP1
Binding Specificity:	AA 1-167
Reactivity:	Human
Host:	Rabbit
Clonality:	Polyclonal
Conjugate:	This XBP1 antibody is un-conjugated
Application:	ELISA, Immunohistochemistry (IHC), Immunofluorescence (IF)

## Product Details

Immunogen:	Recombinant Human X-box-binding protein 1 protein (1-167AA)
Isotype:	IgG
Cross-Reactivity:	Human
Purification:	>95%, Protein G purified

## Target Details

Target:	XBP1
Alternative Name:	XBP1 ( <a href="#">XBP1 Products</a> )
Background:	Background: Functions as a transcription factor during endoplasmic reticulum (ER) stress by regulating the unfolded protein response (UPR). Required for cardiac myogenesis and

## Target Details

hepatogenesis during embryonic development, and the development of secretory tissues such as exocrine pancreas and salivary gland (By similarity). Involved in terminal differentiation of B lymphocytes to plasma cells and production of immunoglobulins (PubMed:11460154).

Modulates the cellular response to ER stress in a PIK3R-dependent manner (PubMed:20348923). Binds to the cis-acting X box present in the promoter regions of major histocompatibility complex class II genes (PubMed:8349596). Involved in VEGF-induced endothelial cell (EC) proliferation and retinal blood vessel formation during embryonic development but also for angiogenesis in adult tissues under ischemic conditions. Functions also as a major regulator of the UPR in obesity-induced insulin resistance and type 2 diabetes for the management of obesity and diabetes prevention (By similarity).

Aliases: Tax responsive element binding protein 5 antibody, Tax-responsive element-binding protein 5 antibody, TREB5 antibody, X box binding protein 1 antibody, X box binding protein 2 antibody, X-box-binding protein 1 antibody, XBP 1 antibody, XBP-1 antibody, XBP1 antibody, XBP1\_HUMAN antibody, XBP2 antibody

UniProt: [P17861](#)

Pathways: [ER-Nucleus Signaling](#), [Unfolded Protein Response](#)

## Application Details

Application Notes: Recommended dilution: IHC:1:20-1:200, IF:1:50-1:200,

Restrictions: For Research Use only

## Handling

Format: Liquid

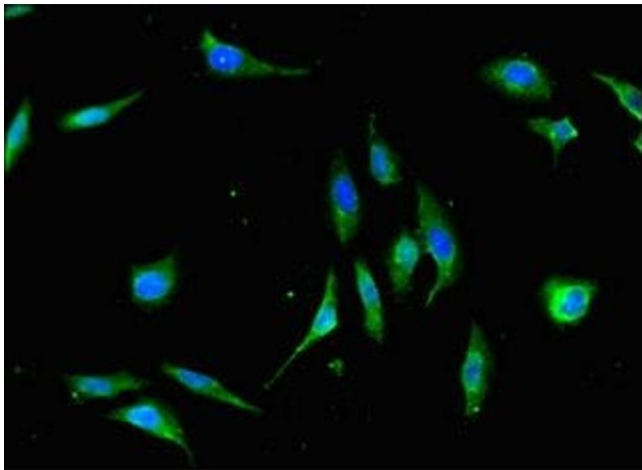
Buffer: Preservative: 0.03 % Proclin 300  
Constituents: 50 % Glycerol, 0.01M PBS, PH 7.4

Preservative: ProClin

Precaution of Use: This product contains ProClin: a POISONOUS AND HAZARDOUS SUBSTANCE which should be handled by trained staff only.

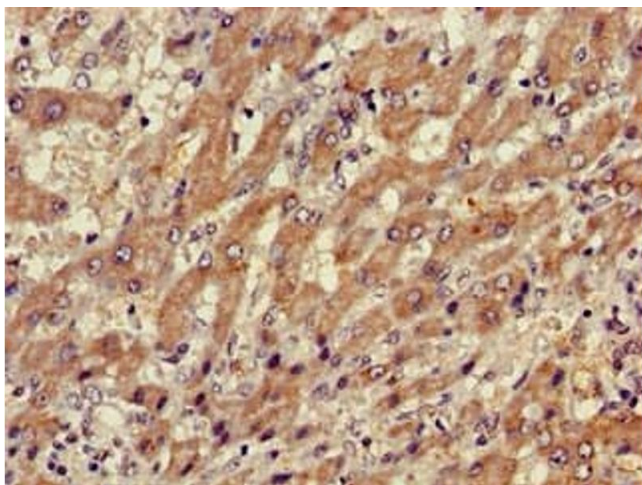
Storage: -20 °C,-80 °C

Storage Comment: Upon receipt, store at -20°C or -80°C. Avoid repeated freeze.



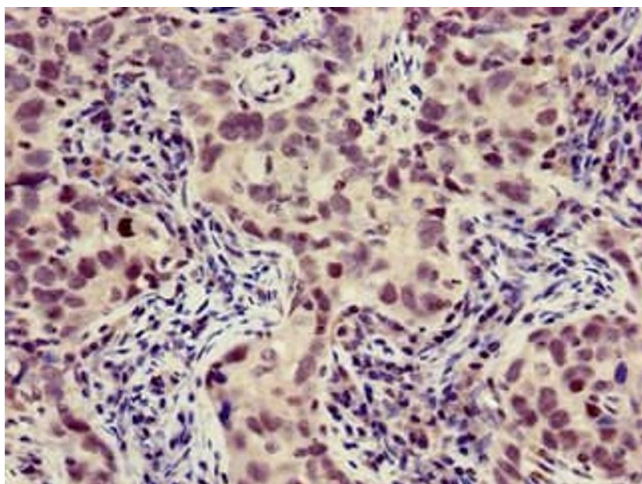
#### Immunofluorescence

**Image 1.** Immunofluorescent analysis of HeLa cells using ABIN7175883 at dilution of 1:100 and Alexa Fluor 488-conjugated AffiniPure Goat Anti-Rabbit IgG(H+L)



#### Immunohistochemistry

**Image 2.** Immunohistochemistry of paraffin-embedded human liver cancer using ABIN7175883 at dilution of 1:100



#### Immunohistochemistry

**Image 3.** Immunohistochemistry of paraffin-embedded human pancreatic cancer using ABIN7175883 at dilution of 1:100