



Datasheet for ABIN7175891
anti-RPGRIP1 antibody (AA 400-580)



[Go to Product page](#)

2 Images

Overview

Quantity:	100 µL
Target:	RPGRIP1
Binding Specificity:	AA 400-580
Reactivity:	Human
Host:	Rabbit
Clonality:	Polyclonal
Conjugate:	This RPGRIP1 antibody is un-conjugated
Application:	ELISA, Immunohistochemistry (IHC)

Product Details

Immunogen:	Recombinant Human X-linked retinitis pigmentosa GTPase regulator-interacting protein 1 protein (400-580AA)
Isotype:	IgG
Cross-Reactivity:	Human
Purification:	Antigen Affinity Purified

Target Details

Target:	RPGRIP1
Alternative Name:	RPGRIP1 (RPGRIP1 Products)
Background:	Background: May function as scaffolding protein. Required for normal location of RPGR at the

Target Details

connecting cilium of photoreceptor cells. Required for normal disk morphogenesis and disk organization in the outer segment of photoreceptor cells and for survival of photoreceptor cells. Aliases: RPGRIP1 antibody, X-linked retinitis pigmentosa GTPase regulator-interacting protein 1 antibody, RPGR-interacting protein 1 antibody

UniProt: [Q96KN7](#)

Application Details

Application Notes: Recommended dilution: IHC:1:20-1:200,

Restrictions: For Research Use only

Handling

Format: Liquid

Buffer: PBS with 0.02 % sodium azide, 50 % glycerol, pH 7.3.

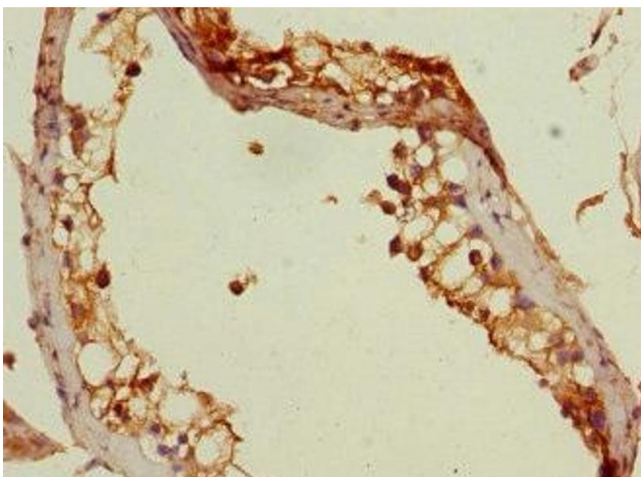
Preservative: Sodium azide

Precaution of Use: This product contains Sodium azide: a POISONOUS AND HAZARDOUS SUBSTANCE which should be handled by trained staff only.

Storage: -20 °C,-80 °C

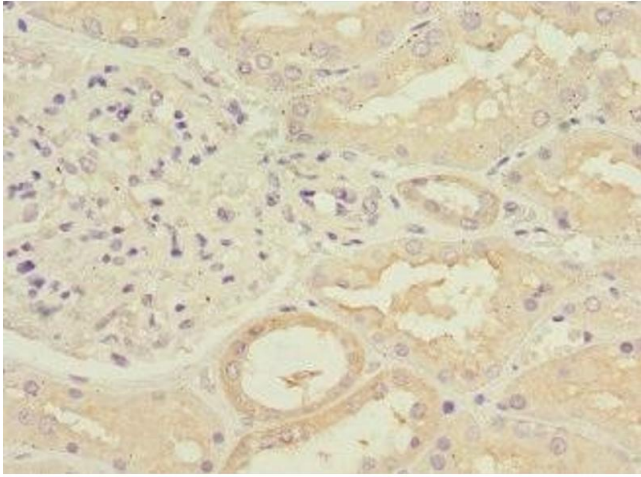
Storage Comment: Upon receipt, store at -20°C or -80°C. Avoid repeated freeze.

Images



Immunohistochemistry

Image 1. Immunohistochemistry of paraffin-embedded human testis tissue using ABIN7175891 at dilution of 1:100



Immunohistochemistry

Image 2. Immunohistochemistry of paraffin-embedded human kidney tissue using ABIN7175891 at dilution of 1:100