

Datasheet for ABIN7175905  
**anti-XRCC6 antibody (AA 2-609)**



[Go to Product page](#)

4 Images

### Overview

Quantity:	100 µg
Target:	XRCC6
Binding Specificity:	AA 2-609
Reactivity:	Human
Host:	Rabbit
Clonality:	Polyclonal
Conjugate:	This XRCC6 antibody is un-conjugated
Application:	Western Blotting (WB), ELISA, Immunohistochemistry (IHC), Immunofluorescence (IF)

### Product Details

Immunogen:	Recombinant Human X-ray repair cross-complementing protein 6 ptein (2-609AA)
Isotype:	IgG
Cross-Reactivity:	Human
Purification:	>95%, Protein G purified

### Target Details

Target:	XRCC6
Alternative Name:	XRCC6 ( <a href="#">XRCC6 Products</a> )
Background:	Background: Single stranded DNA-dependent ATP-dependent helicase. Has a role in chromosome translocation. The DNA helicase II complex binds preferentially to fork-like ends

## Target Details

---

of double-stranded DNA in a cell cycle-dependent manner. It works in the 3'→5' direction. Binding to DNA may be mediated by XRCC6. Involved in DNA non-homologous end joining (NHEJ) required for double-strand break repair and V(D)J recombination. The XRCC5/6 dimer acts as regulatory subunit of the DNA-dependent protein kinase complex DNA-PK by increasing the affinity of the catalytic subunit PRKDC to DNA by 100-fold. The XRCC5/6 dimer is probably involved in stabilizing broken DNA ends and bringing them together. The assembly of the DNA-PK complex to DNA ends is required for the NHEJ ligation step. Required for osteocalcin gene expression. Probably also acts as a 5'-deoxyribose-5-phosphate lyase (5'-dRP lyase), by catalyzing the beta-elimination of the 5' deoxyribose-5-phosphate at an abasic site near double-strand breaks. 5'-dRP lyase activity allows to 'clean' the termini of abasic sites, a class of nucleotide damage commonly associated with strand breaks, before such broken ends can be joined. The XRCC5/6 dimer together with APEX1 acts as a negative regulator of transcription.

Aliases: 5'-deoxyribose-5-phosphate lyase Ku70 antibody, 5'-dRP lyase Ku70 antibody, 70 kDa subunit of Ku antigen antibody, ATP dependent DNA helicase 2 subunit 1 antibody, ATP dependent DNA helicase II 70 kDa subunit antibody, ATP-dependent DNA helicase 2 subunit 1 antibody, ATP-dependent DNA helicase II 70 kDa subunit antibody, CTC box binding factor 75 kDa subunit antibody, CTC box-binding factor 75 kDa subunit antibody, CTC75 antibody, CTCBF antibody, DNA repair protein XRCC6 antibody, G22P1 antibody, Ku 70 antibody, Ku autoantigen p70 subunit antibody, Ku autoantigen, 70 kDa antibody, Ku p70 antibody, Ku70 antibody, Ku70 DNA binding component of DNA-dependent protein kinase complex (thyroid autoantigen 70 kDa antibody, Kup70 antibody, Lupus Ku autoantigen protein p70 antibody, ML8 antibody, Thyroid autoantigen 70kD (Ku antigen) antibody, Thyroid autoantigen antibody, Thyroid lupus autoantigen antibody, Thyroid lupus autoantigen p70 antibody, Thyroid-lupus autoantigen antibody, TLAA antibody, X ray repair complementing defective repair in Chinese hamster cells 6 antibody, X-ray repair complementing defective repair in Chinese hamster cells 6 antibody, X-ray repair cross-complementing protein 6 antibody, XRCC 6 antibody, Xrcc6 antibody, XRCC6\_HUMAN antibody

---

UniProt: [P12956](#)

---

Pathways: [DNA Damage Repair](#)

## Application Details

---

Application Notes: Recommended dilution: WB:1:500-1:5000, IHC:1:20-1:200, IF:1:50-1:200,

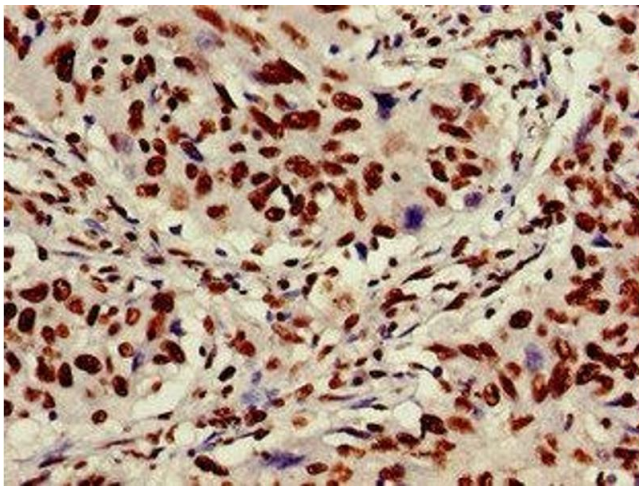
---

Restrictions: For Research Use only

## Handling

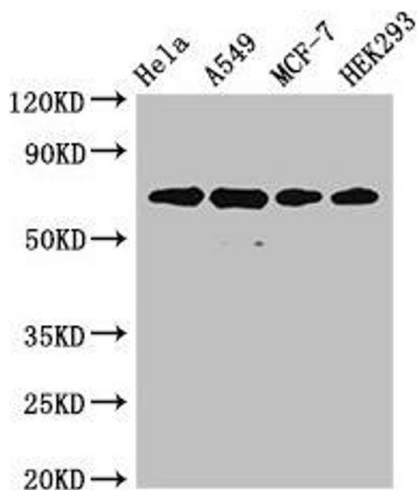
Format:	Liquid
Buffer:	Preservative: 0.03 % Proclin 300 Constituents: 50 % Glycerol, 0.01M PBS, PH 7.4
Preservative:	ProClin
Precaution of Use:	This product contains ProClin: a POISONOUS AND HAZARDOUS SUBSTANCE which should be handled by trained staff only.
Storage:	-20 °C,-80 °C
Storage Comment:	Upon receipt, store at -20°C or -80°C. Avoid repeated freeze.

## Images



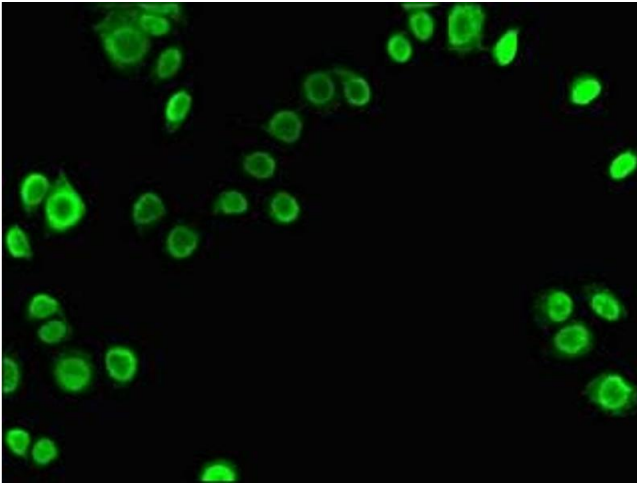
### Immunohistochemistry

**Image 1.** Immunohistochemistry of paraffin-embedded human lung cancer using ABIN7175905 at dilution of 1:100



### Western Blotting

**Image 2.** Western Blot Positive WB detected in: HeLa whole cell lysate, A549 whole cell lysate, MCF-7 whole cell lysate, HEK293 whole cell lysate All lanes: XRCC6 antibody at 4  $\mu$ g/mL Secondary Goat polyclonal to rabbit IgG at 1/50000 dilution Predicted band size: 70, 66 kDa Observed band size: 70 kDa



### Immunofluorescence

**Image 3.** Immunofluorescent analysis of PC-3 cells using ABIN7175905 at dilution of 1:100 and Alexa Fluor 488-conjugated AffiniPure Goat Anti-Rabbit IgG(H+L)

Please check the [product details page](#) for more images. Overall 4 images are available for ABIN7175905.