



[Go to Product page](#)

Datasheet for ABIN7175909  
**anti-XPNPEP1 antibody (AA 2-623)**

2 Images

Overview

Quantity:	100 µg
Target:	XPNPEP1
Binding Specificity:	AA 2-623
Reactivity:	Human
Host:	Rabbit
Clonality:	Polyclonal
Conjugate:	This XPNPEP1 antibody is un-conjugated
Application:	ELISA, Western Blotting (WB), Immunohistochemistry (IHC)

Product Details

Immunogen:	Recombinant Human Xaa-Pro aminopeptidase 1 protein (2-623AA)
Isotype:	IgG
Cross-Reactivity:	Human, Mouse
Purification:	>95%, Protein G purified

Target Details

Target:	XPNPEP1
Alternative Name:	XPNPEP1 ( <a href="#">XPNPEP1 Products</a> )
Background:	Background: Contributes to the degradation of bradykinin. Catalyzes the removal of a penultimate prolyl residue from the N-termini of peptides, such as Arg-Pro-Pro.

## Target Details

---

Aliases: Aminoacylproline aminopeptidase antibody, aminopeptidase P, cytosolic antibody, APP1 antibody, Cytosolic aminopeptidase P antibody, RP11 451M19.1 antibody, sAmp antibody, Soluble aminopeptidase P antibody, soluble antibody, X Pro aminopeptidase 1 antibody, X prolyl aminopeptidase (aminopeptidase P) 1 antibody, X prolyl aminopeptidase (Aminopeptidase P) 1 soluble antibody, X prolyl aminopeptidase 1 antibody, X prolyl aminopeptidase 1 soluble antibody, X-Pro aminopeptidase 1 antibody, X-prolyl aminopeptidase 1 antibody, Xaa Pro aminopeptidase 1 antibody, Xaa-Pro aminopeptidase 1 antibody, XPNPEP 1 antibody, XPNPEP antibody, xpnpep1 antibody, XPNPEPL antibody, XPNPEPL1 antibody, XPP1\_HUMAN antibody

---

UniProt: [Q9NQW7](#)

## Application Details

---

Application Notes: Recommended dilution: WB:1:1000-1:5000, IHC:1:20-1:200,

Restrictions: For Research Use only

## Handling

---

Format: Liquid

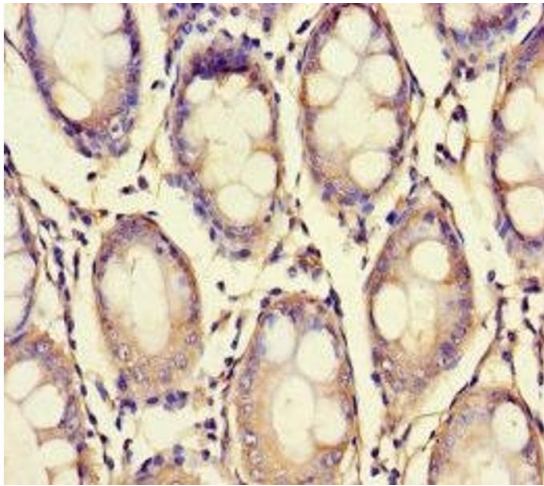
Buffer: Preservative: 0.03 % Proclin 300  
Constituents: 50 % Glycerol, 0.01M PBS, PH 7.4

Preservative: ProClin

Precaution of Use: This product contains ProClin: a POISONOUS AND HAZARDOUS SUBSTANCE which should be handled by trained staff only.

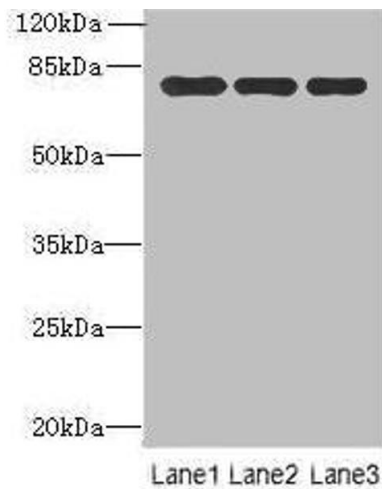
Storage: -20 °C,-80 °C

Storage Comment: Upon receipt, store at -20°C or -80°C. Avoid repeated freeze.



### Immunohistochemistry

**Image 1.** Immunohistochemistry of paraffin-embedded human colon cancer using ABIN7175909 at dilution of 1:100



### Western Blotting

**Image 2.** Western blot All lanes: Xaa-Pro aminopeptidase 1 antibody at 8  $\mu$ g/mL Lane 1: Mouse small intestine tissue Lane 2: Mouse stomach tissue Lane 3: Mouse kidney tissue Secondary Goat polyclonal to rabbit IgG at 1/10000 dilution Predicted band size: 70, 68, 75, 73 kDa Observed band size: 70 kDa