



[Go to Product page](#)

Datasheet for ABIN7175925
anti-XIRP2 antibody (AA 2861-3004)

2 Images

Overview

Quantity:	100 µg
Target:	XIRP2
Binding Specificity:	AA 2861-3004
Reactivity:	Human
Host:	Rabbit
Clonality:	Polyclonal
Conjugate:	This XIRP2 antibody is un-conjugated
Application:	ELISA, Immunohistochemistry (IHC)

Product Details

Immunogen:	Recombinant Human Xin actin-binding repeat-containing protein 2 protein (2861-3004AA)
Isotype:	IgG
Cross-Reactivity:	Human
Purification:	>95%, Protein G purified

Target Details

Target:	XIRP2
Alternative Name:	XIRP2 (XIRP2 Products)
Background:	Background: Protects actin filaments from depolymerization. Aliases: Beta-xin antibody, Cardiomyopathy associated 3 antibody, Cardiomyopathy-associated

Target Details

protein 3 antibody, CMYA3 antibody, DKFZp451G055 antibody, DKFZp779G1747 antibody, FLJ39111 antibody, FLJ40200 antibody, Myomaxin antibody, Xeplin antibody, Xin actin binding repeat containing 2 antibody, Xin actin-binding repeat-containing protein 2 antibody, Xin repeat protein 2 antibody, Xirp2 antibody, XIRP2_HUMAN antibody

UniProt: [A4UGR9](#)

Pathways: [Cell-Cell Junction Organization](#)

Application Details

Application Notes: Recommended dilution: IHC:1:200-1:500,

Restrictions: For Research Use only

Handling

Format: Liquid

Buffer: Preservative: 0.03 % Proclin 300
Constituents: 50 % Glycerol, 0.01M PBS, pH 7.4

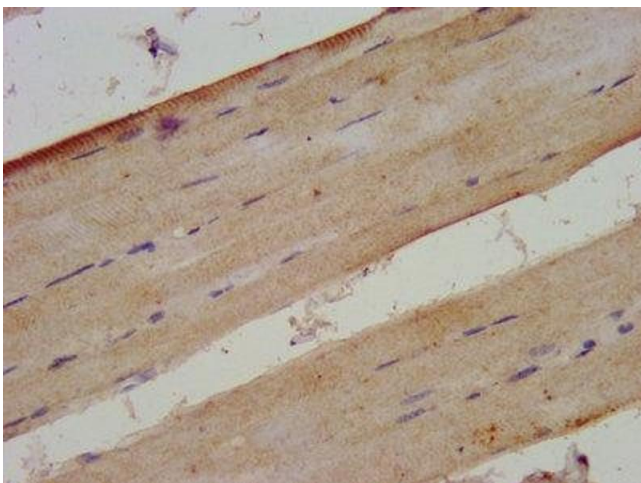
Preservative: ProClin

Precaution of Use: This product contains ProClin: a POISONOUS AND HAZARDOUS SUBSTANCE which should be handled by trained staff only.

Storage: -20 °C,-80 °C

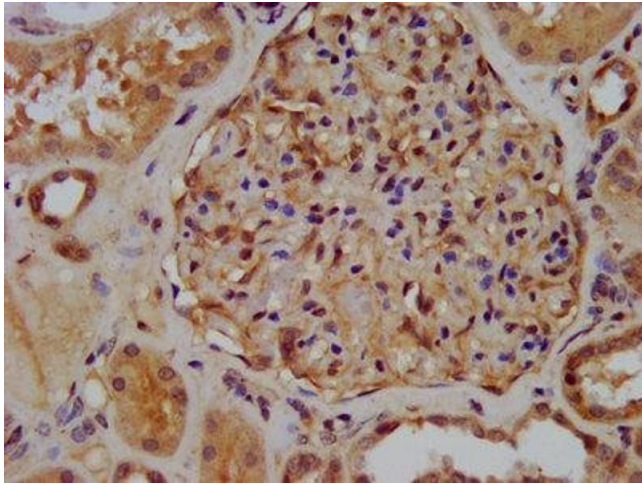
Storage Comment: Upon receipt, store at -20°C or -80°C. Avoid repeated freeze.

Images



Immunohistochemistry

Image 1. IHC image of ABIN7175925 diluted at 1:300 and staining in paraffin-embedded human skeletal muscle tissue performed on a Leica Bond™ system. After dewaxing and hydration, antigen retrieval was mediated by high pressure in a citrate buffer (pH 6.0). Section was blocked with 10% normal goat serum 30min at RT. Then primary antibody (1% BSA) was incubated at 4°C overnight. The primary is detected by a biotinylated secondary antibody and



visualized using an HRP conjugated SP system.

Immunohistochemistry

Image 2. IHC image of ABIN7175925 diluted at 1:300 and staining in paraffin-embedded human kidney tissue performed on a Leica Bond™ system. After dewaxing and hydration, antigen retrieval was mediated by high pressure in a citrate buffer (pH 6.0). Section was blocked with 10% normal goat serum 30min at RT. Then primary antibody (1% BSA) was incubated at 4°C overnight. The primary is detected by a biotinylated secondary antibody and visualized using an HRP conjugated SP system.