



[Go to Product page](#)

Datasheet for ABIN7175929

## anti-XKR8 antibody (AA 69-158)

### 4 Images

#### Overview

Quantity:	100 µg
Target:	XKR8
Binding Specificity:	AA 69-158
Reactivity:	Human
Host:	Rabbit
Clonality:	Polyclonal
Conjugate:	This XKR8 antibody is un-conjugated
Application:	ELISA, Western Blotting (WB), Immunohistochemistry (IHC), Immunofluorescence (IF)

#### Product Details

Immunogen:	Recombinant Human XK-related protein 8 protein (69-158AA)
Isotype:	IgG
Cross-Reactivity:	Human
Purification:	>95%, Protein G purified

#### Target Details

Target:	XKR8
Alternative Name:	XKR8 ( <a href="#">XKR8 Products</a> )
Background:	Background: Promotes phosphatidylserine exposure on apoptotic cell surface, possibly by mediating phospholipid scrambling. Phosphatidylserine is a specific marker only present at the

## Target Details

---

surface of apoptotic cells and acts as a specific signal for engulfment. Has no effect on calcium-induced exposure of phosphatidylserine. Activated upon caspase cleavage, suggesting that it does not act prior the onset of apoptosis.

Aliases: FLJ10307 antibody, hXkr8 antibody, RP11-460I13.3 antibody, X Kell blood group precursor-related family, member 8 antibody, XK-related protein 8 antibody, XKR8 antibody, XKR8\_HUMAN antibody, XRG8 antibody

---

UniProt: [Q9H6D3](#)

## Application Details

---

Application Notes: Recommended dilution: WB:1:500-1:5000, IHC:1:1000-1:2000, IF:1:200-1:500,

Restrictions: For Research Use only

## Handling

---

Format: Liquid

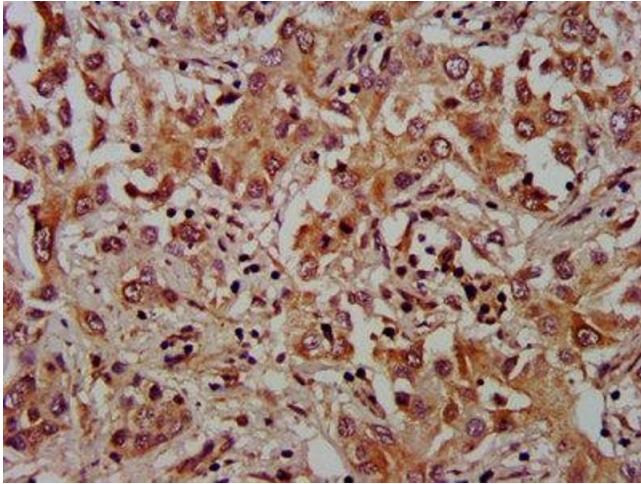
Buffer: Preservative: 0.03 % Proclin 300  
Constituents: 50 % Glycerol, 0.01M PBS, PH 7.4

Preservative: ProClin

Precaution of Use: This product contains ProClin: a POISONOUS AND HAZARDOUS SUBSTANCE which should be handled by trained staff only.

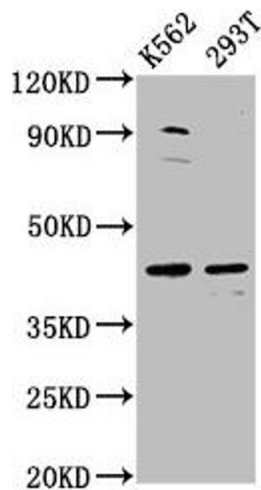
Storage: -20 °C,-80 °C

Storage Comment: Upon receipt, store at -20°C or -80°C. Avoid repeated freeze.



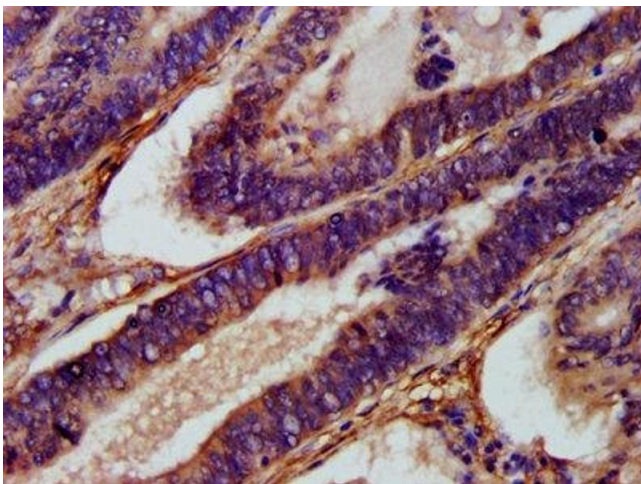
### Immunohistochemistry

**Image 1.** IHC image of ABIN7175929 diluted at 1:1000 and staining in paraffin-embedded human liver cancer performed on a Leica Bond™ system. After dewaxing and hydration, antigen retrieval was mediated by high pressure in a citrate buffer (pH 6.0). Section was blocked with 10% normal goat serum 30min at RT. Then primary antibody (1% BSA) was incubated at 4°C overnight. The primary is detected by a biotinylated secondary antibody and visualized using an HRP conjugated SP system.



### Western Blotting

**Image 2.** Western Blot Positive WB detected in: K562 whole cell lysate, 293T whole cell lysate All lanes: XKR8 antibody at 3.4 µg/mL Secondary Goat polyclonal to rabbit IgG at 1/50000 dilution Predicted band size: 45 kDa Observed band size: 45 kDa



### Immunohistochemistry

**Image 3.** IHC image of ABIN7175929 diluted at 1:1000 and staining in paraffin-embedded human colon cancer performed on a Leica Bond™ system. After dewaxing and hydration, antigen retrieval was mediated by high pressure in a citrate buffer (pH 6.0). Section was blocked with 10% normal goat serum 30min at RT. Then primary antibody (1% BSA) was incubated at 4°C overnight. The primary is detected by a biotinylated secondary antibody and visualized using an HRP conjugated SP system.

Please check the [product details page](#) for more images. Overall 4 images are available for ABIN7175929.