

Datasheet for ABIN7175933  
**anti-SLC7A7 antibody (AA 325-382)**[Go to Product page](#)

## 4 Images

## Overview

Quantity:	100 µg
Target:	SLC7A7 (Slc7a7)
Binding Specificity:	AA 325-382
Reactivity:	Human
Host:	Rabbit
Clonality:	Polyclonal
Conjugate:	This SLC7A7 antibody is un-conjugated
Application:	ELISA, Western Blotting (WB), Immunohistochemistry (IHC), Immunofluorescence (IF)

## Product Details

Immunogen:	Recombinant Human Y+L amino acid transporter 1 protein (325-382AA)
Isotype:	IgG
Cross-Reactivity:	Human, Mouse
Purification:	>95%, Protein G purified

## Target Details

Target:	SLC7A7 (Slc7a7)
Alternative Name:	SLC7A7 ( <a href="#">Slc7a7 Products</a> )
Background:	Background: Involved in the sodium-independent uptake of dibasic amino acids and sodium-dependent uptake of some neutral amino acids. Requires coexpression with SLC3A2/4F2hc to

## Target Details

mediate the uptake of arginine, leucine and glutamine. Plays a role in nitric oxide synthesis in human umbilical vein endothelial cells (HUVECs) via transport of L-arginine. Involved in the transport of L-arginine in monocytes.

Aliases: LAT3 antibody, LPI antibody, Monocyte amino acid permease 2 antibody, MOP-2 antibody, MOP2 antibody, SLC7A 7 antibody, Slc7a7 antibody, Solute carrier family 7 (cationic amino acid transporter, y+ system), member 7 antibody, Solute carrier family 7 member 7 antibody, y(+)L type amino acid transporter 1 antibody, y(+)L-type amino acid transporter 1 antibody, Y+L amino acid transporter 1 antibody, y+LAT-1 antibody, Y+LAT1 antibody, YLAT1\_HUMAN antibody

UniProt: [Q9UM01](#)

## Application Details

Application Notes: Recommended dilution: WB:1:500-1:5000, IHC:1:20-1:200, IF:1:50-1:200,

Restrictions: For Research Use only

## Handling

Format: Liquid

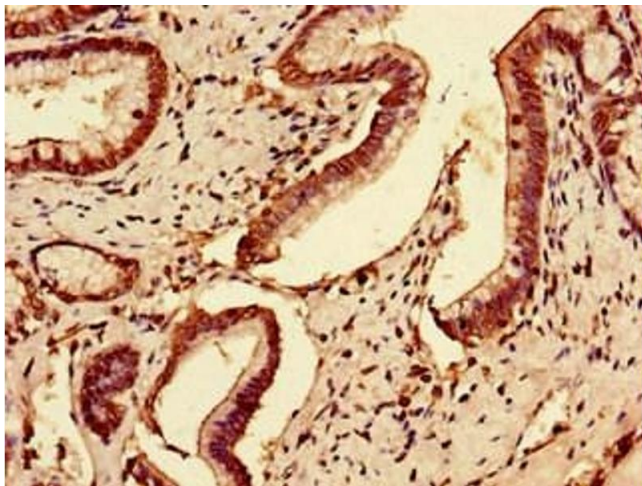
Buffer: Preservative: 0.03 % Proclin 300  
Constituents: 50 % Glycerol, 0.01M PBS, PH 7.4

Preservative: ProClin

Precaution of Use: This product contains ProClin: a POISONOUS AND HAZARDOUS SUBSTANCE which should be handled by trained staff only.

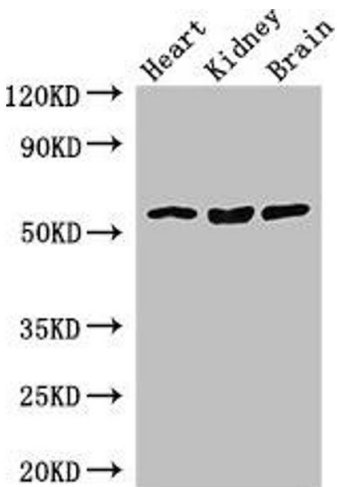
Storage: -20 °C, -80 °C

Storage Comment: Upon receipt, store at -20°C or -80°C. Avoid repeated freeze.



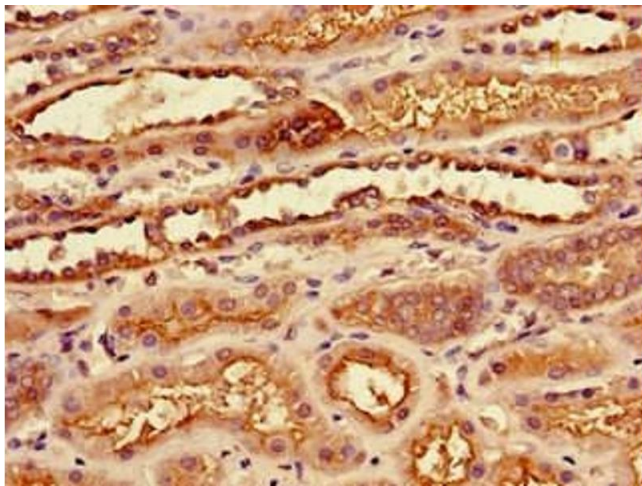
#### Immunohistochemistry

**Image 1.** Immunohistochemistry of paraffin-embedded human pancreatic tissue using ABIN7175933 at dilution of 1:100



#### Western Blotting

**Image 2.** Western Blot Positive WB detected in: Mouse heart tissue, Mouse kidney tissue, Mouse brain tissue All lanes: SLC7A7 antibody at 3.5 µg/mL Secondary Goat polyclonal to rabbit IgG at 1/50000 dilution Predicted band size: 56 kDa Observed band size: 56 kDa



#### Immunohistochemistry

**Image 3.** Immunohistochemistry of paraffin-embedded human kidney tissue using ABIN7175933 at dilution of 1:100

Please check the [product details page](#) for more images. Overall 4 images are available for ABIN7175933.