

Datasheet for ABIN7175958
anti-YY1AP1 antibody (AA 335-466)[Go to Product page](#)

3 Images

Overview

Quantity:	100 µg
Target:	YY1AP1
Binding Specificity:	AA 335-466
Reactivity:	Human
Host:	Rabbit
Clonality:	Polyclonal
Conjugate:	This YY1AP1 antibody is un-conjugated
Application:	Western Blotting (WB), ELISA, Immunofluorescence (IF), Immunohistochemistry (IHC)

Product Details

Immunogen:	Recombinant Human YY1-associated protein 1 protein (335-466AA)
Isotype:	IgG
Cross-Reactivity:	Human
Purification:	>95%, Protein G purified

Target Details

Target:	YY1AP1
Alternative Name:	YY1AP1 (YY1AP1 Products)
Background:	Background: Associates with the INO80 chromatin remodeling complex, which is responsible for transcriptional regulation, DNA repair, and replication (PubMed:27939641). Enhances

Target Details

transcription activation by YY1 (PubMed:14744866). Plays a role in cell cycle regulation (PubMed:17541814, PubMed:27939641).

Aliases: FLJ10875 antibody, FLJ13914 antibody, GRNG antibody, HCCA1 antibody, HCCA2 antibody, Hepatocellular carcinoma susceptibility protein antibody, Hepatocellular carcinoma-associated protein 2 antibody, OTTHUMP00000033475 antibody, OTTHUMP00000033476 antibody, OTTHUMP00000200831 antibody, OTTHUMP00000200832 antibody, OTTHUMP00000200833 antibody, OTTHUMP00000200836 antibody, YAP antibody, YY1-associated protein 1 antibody, YY1AP antibody, YY1AP1 antibody, YYAP1_HUMAN antibody

UniProt: [Q9H869](#)

Application Details

Application Notes: Recommended dilution: WB:1:1000-1:5000, IHC:1:200-1:500, IF:1:50-1:200,

Restrictions: For Research Use only

Handling

Format: Liquid

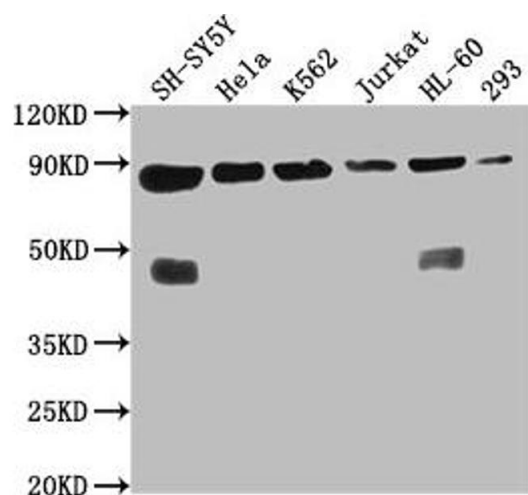
Buffer: Preservative: 0.03 % Proclin 300
Constituents: 50 % Glycerol, 0.01M PBS, pH 7.4

Preservative: ProClin

Precaution of Use: This product contains ProClin: a POISONOUS AND HAZARDOUS SUBSTANCE which should be handled by trained staff only.

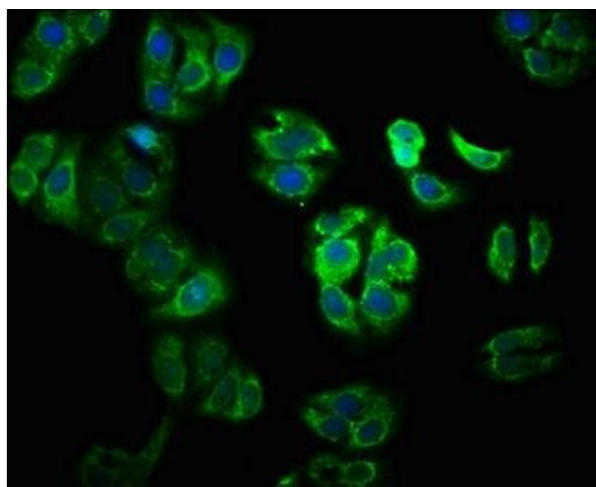
Storage: -20 °C, -80 °C

Storage Comment: Upon receipt, store at -20°C or -80°C. Avoid repeated freeze.



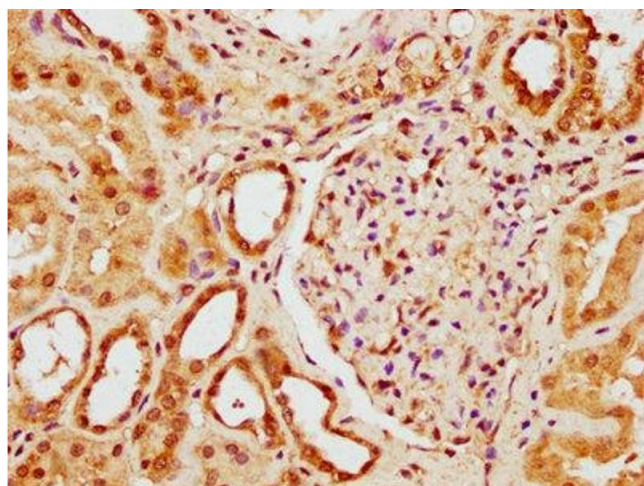
Western Blotting

Image 1. Western Blot Positive WB detected in: SH-SY5Y whole cell lysate, HeLa whole cell lysate, K562 whole cell lysate, Jurkat whole cell lysate, HL60 whole cell lysate, 293 whole cell lysate. All lanes: YY1AP1 antibody at 1:2000. Secondary Goat polyclonal to rabbit IgG at 1/50000 dilution. Predicted band size: 88, 84, 82, 81, 76, 80, 51, 96, 98 kDa. Observed band size: 88 kDa.



Immunofluorescence

Image 2. Immunofluorescence staining of HepG2 cells with ABIN7175958 at 1:100, counter-stained with DAPI. The cells were fixed in 4% formaldehyde, permeabilized using 0.2% Triton X-100 and blocked in 10% normal Goat Serum. The cells were then incubated with the antibody overnight at 4°C. The secondary antibody was Alexa Fluor 488-conjugated AffiniPure Goat Anti-Rabbit IgG(H+L).



Immunohistochemistry

Image 3. IHC image of ABIN7175958 diluted at 1:300 and staining in paraffin-embedded human kidney tissue performed on a Leica Bond™ system. After dewaxing and hydration, antigen retrieval was mediated by high pressure in a citrate buffer (pH 6.0). Section was blocked with 10% normal goat serum 30min at RT. Then primary antibody (1% BSA) was incubated at 4°C overnight. The primary is detected by a biotinylated secondary antibody and visualized using an HRP conjugated SP system.