



[Go to Product page](#)

Datasheet for ABIN7175962  
**anti-C7orf29 antibody (C-Term)**

1 Image

Overview

Quantity:	100 µg
Target:	C7orf29 (C7ORF29)
Binding Specificity:	AA 1-236, C-Term
Reactivity:	Human
Host:	Rabbit
Clonality:	Polyclonal
Conjugate:	This C7orf29 antibody is un-conjugated
Application:	ELISA, Immunohistochemistry (IHC)

Product Details

Immunogen:	Recombinant Human ZBED6 C-terminal-like protein (1-236AA)
Isotype:	IgG
Cross-Reactivity:	Human
Purification:	>95%, Protein G purified

Target Details

Target:	C7orf29 (C7ORF29)
Alternative Name:	ZBED6CL ( <a href="#">C7ORF29 Products</a> )
Background:	ZBED6CL antibody, C7orf29 antibody, ZBED6 C-terminal-like protein antibody
UniProt:	<a href="#">Q96FA7</a>

## Application Details

---

Application Notes: Recommended dilution: IHC:1:20-1:200,

Restrictions: For Research Use only

## Handling

---

Format: Liquid

Buffer: Preservative: 0.03 % Proclin 300  
Constituents: 50 % Glycerol, 0.01M PBS, PH 7.4

Preservative: ProClin

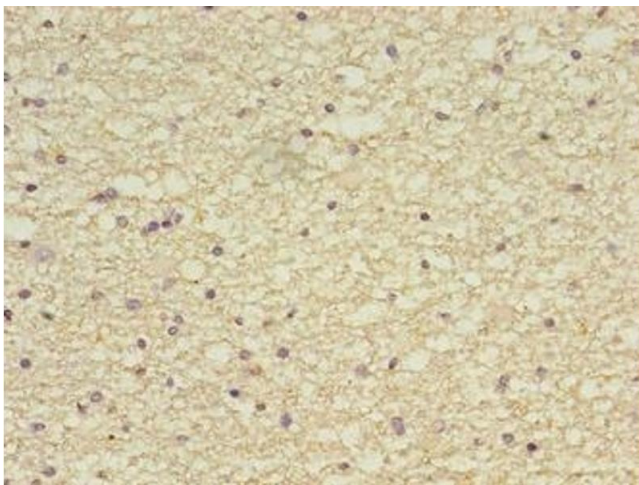
Precaution of Use: This product contains ProClin: a POISONOUS AND HAZARDOUS SUBSTANCE which should be handled by trained staff only.

Storage: -20 °C,-80 °C

Storage Comment: Upon receipt, store at -20°C or -80°C. Avoid repeated freeze.

## Images

---



### Immunohistochemistry

**Image 1.** Immunohistochemistry of paraffin-embedded human brain tissue using ABIN7175962 at dilution of 1:100