



[Go to Product page](#)

Datasheet for ABIN7176057
anti-ZFYVE1 antibody (AA 1-280)

2 Images

Overview

Quantity:	100 µL
Target:	ZFYVE1
Binding Specificity:	AA 1-280
Reactivity:	Human
Host:	Rabbit
Clonality:	Polyclonal
Conjugate:	This ZFYVE1 antibody is un-conjugated
Application:	Western Blotting (WB), ELISA, Immunohistochemistry (IHC)

Product Details

Immunogen:	Recombinant Human Zinc finger FYVE domain-containing protein 1 protein (1-280AA)
Isotype:	IgG
Cross-Reactivity:	Human, Mouse
Purification:	Antigen Affinity Purified

Target Details

Target:	ZFYVE1
Alternative Name:	ZFYVE1 (ZFYVE1 Products)
Background:	Background: autophagosome, endoplasmic reticulum, ER-mitochondrion membrane contact site, extrinsic component of omegasome membrane, Golgi stack, perinuclear region of

Target Details

cytoplasm, pre-autophagosomal structure, 1-phosphatidylinositol binding, phosphatidylinositol-3,4,5-trisphosphate binding, phosphatidylinositol-3,4-bisphosphate binding

Aliases: ZFYVE1 antibody, DFCP1 antibody, KIAA1589 antibody, TAFF1 antibody, ZNFN2A1 antibody, PP10436Zinc finger FYVE domain-containing protein 1 antibody, Double FYVE-containing protein 1 antibody, SR3 antibody, Tandem FYVE fingers-1 antibody

UniProt: [Q9HBF4](#)

Application Details

Application Notes: Recommended dilution: WB:1:1000-1:5000, IHC:1:20-1:200,

Restrictions: For Research Use only

Handling

Format: Liquid

Buffer: PBS with 0.02 % sodium azide, 50 % glycerol, pH 7.3.

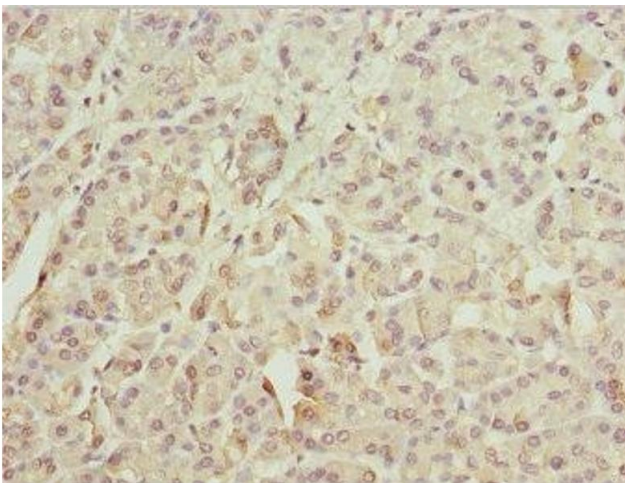
Preservative: Sodium azide

Precaution of Use: This product contains Sodium azide: a POISONOUS AND HAZARDOUS SUBSTANCE which should be handled by trained staff only.

Storage: -20 °C,-80 °C

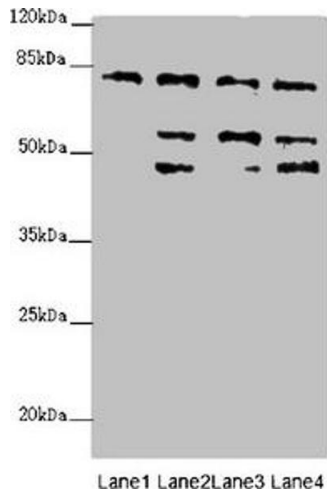
Storage Comment: Upon receipt, store at -20°C or -80°C. Avoid repeated freeze.

Images



Immunohistochemistry

Image 1. Immunohistochemistry of paraffin-embedded human pancreatic tissue using ABIN7176057 at dilution of 1:100



Western Blotting

Image 2. Western blot All lanes: ZFYVE1 antibody at 6.89 μ g/mL Lane 1: Hela whole cell lysate Lane 2: 293T whole cell lysate Lane 3: Mouse liver tissue Lane 4: Mouse kidney tissue Secondary Goat polyclonal to rabbit IgG at 1/10000 dilution Predicted band size: 88, 41, 86 kDa Observed band size: 81, 54, 47 kDa