

Datasheet for ABIN7176059  
**anti-ZFYVE1 antibody (AA 544-762)**[Go to Product page](#)

## 1 Image

## Overview

Quantity:	100 µL
Target:	ZFYVE1
Binding Specificity:	AA 544-762
Reactivity:	Human
Host:	Rabbit
Clonality:	Polyclonal
Conjugate:	This ZFYVE1 antibody is un-conjugated
Application:	ELISA, Immunohistochemistry (IHC)

## Product Details

Immunogen:	Recombinant Human Zinc finger FYVE domain-containing protein 1 protein (544-762aa)
Isotype:	IgG
Cross-Reactivity:	Human
Purification:	>95%, Protein G purified

## Target Details

Target:	ZFYVE1
Alternative Name:	ZFYVE1 ( <a href="#">ZFYVE1 Products</a> )
Background:	Background: autophagosome, endoplasmic reticulum, ER-mitochondrion membrane contact site, extrinsic component of omegasome membrane, Golgi stack, perinuclear region of

## Target Details

cytoplasm, pre-autophagosomal structure, 1-phosphatidylinositol binding, phosphatidylinositol-3,4,5-trisphosphate binding, phosphatidylinositol-3,4-bisphosphate binding  
Aliases: Zinc finger FYVE domain-containing protein 1 (Double FYVE-containing protein 1) (SR3) (Tandem FYVE fingers-1), ZFYVE1, DFCP1 KIAA1589 TAFF1 ZNFN2A1

UniProt: [Q9HBF4](#)

## Application Details

Application Notes: Recommended dilution: IHC:1:100-1:500,

Restrictions: For Research Use only

## Handling

Format: Liquid

Buffer: Preservative: 0.03 % Proclin 300  
Constituents: 50 % Glycerol, 0.01M PBS, pH 7.4

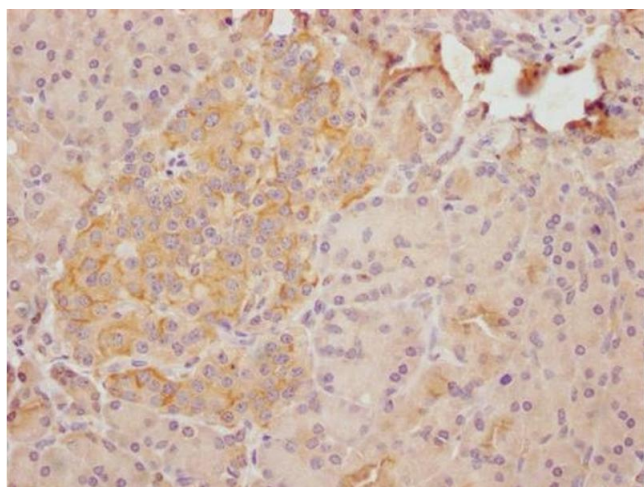
Preservative: ProClin

Precaution of Use: This product contains ProClin: a POISONOUS AND HAZARDOUS SUBSTANCE which should be handled by trained staff only.

Storage: -20 °C,-80 °C

Storage Comment: Upon receipt, store at -20°C or -80°C. Avoid repeated freeze.

## Images



### Immunohistochemistry

**Image 1.** IHC image of ABIN7176059 diluted at 1:100 and staining in paraffin-embedded human pancreatic tissue performed on a Leica Bond™ system. After dewaxing and hydration, antigen retrieval was mediated by high pressure in a citrate buffer (pH 6.0). Section was blocked with 10 % normal goat serum 30 min at RT. Then primary antibody (1 % BSA) was incubated at 4 °C overnight. The primary is detected by a Goat anti-rabbit polymer IgG labeled by HRP and visualized using 0.05 % DAB.