

Datasheet for ABIN7176068
anti-ZFYVE9 antibody (AA 683-926)[Go to Product page](#)

2 Images

Overview

Quantity:	100 µL
Target:	ZFYVE9
Binding Specificity:	AA 683-926
Reactivity:	Human
Host:	Rabbit
Clonality:	Polyclonal
Conjugate:	This ZFYVE9 antibody is un-conjugated
Application:	Western Blotting (WB), ELISA, Immunofluorescence (IF)

Product Details

Immunogen:	Recombinant Human Zinc finger FYVE domain-containing protein 9 protein (683-926AA)
Isotype:	IgG
Cross-Reactivity:	Human
Purification:	Antigen Affinity Purified

Target Details

Target:	ZFYVE9
Alternative Name:	ZFYVE9 (ZFYVE9 Products)
Background:	Background: Early endosomal protein that functions to recruit SMAD2/SMAD3 to intracellular membranes and to the TGF-beta receptor. Plays a significant role in TGF-mediated signaling by

Target Details

regulating the subcellular location of SMAD2 and SMAD3 and modulating the transcriptional activity of the SMAD3/SMAD4 complex. Possibly associated with TGF-beta receptor internalization.

Aliases: CG15667 antibody, hSARA antibody, LD33044p antibody, Madh-interacting protein antibody, MADHIP antibody, Mothers against decapentaplegic homolog-interacting protein antibody, Novel serine protease antibody, NSP antibody, Receptor activation anchor antibody, SAR1 antibody, SARA antibody, SARA1 antibody, Smad anchor for receptor activation antibody, SMADIP antibody, ZFYV9_HUMAN antibody, ZFYVE9 antibody, Zinc finger FYVE domain-containing protein 9 antibody

UniProt: [O95405](#)

Pathways: [Protein targeting to Nucleus](#)

Application Details

Application Notes: Recommended dilution: WB:1:500-1:2000, IF:1:50-1:200,

Restrictions: For Research Use only

Handling

Format: Liquid

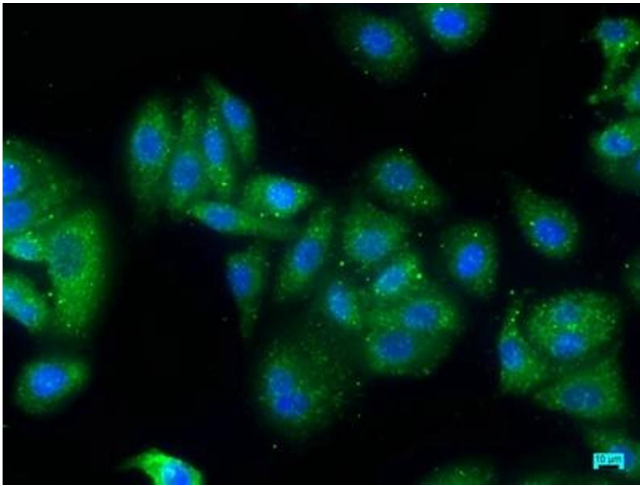
Buffer: Preservative: 0.03 % Proclin 300
Constituents: 50 % Glycerol, 0.01M PBS, pH 7.4

Preservative: ProClin

Precaution of Use: This product contains ProClin: a POISONOUS AND HAZARDOUS SUBSTANCE which should be handled by trained staff only.

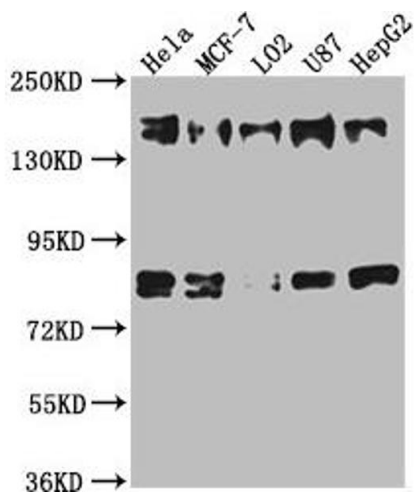
Storage: -20 °C,-80 °C

Storage Comment: Upon receipt, store at -20°C or -80°C. Avoid repeated freeze.



Immunofluorescence

Image 1. Immunofluorescence staining of HepG2 cells with ABIN7176068 at 1:50, counter-stained with DAPI. The cells were fixed in 4 % formaldehyde, permeabilized using 0.2 % Triton X-100 and blocked in 10 % normal Goat Serum. The cells were then incubated with the antibody overnight at 4 °C. The secondary antibody was Alexa Fluor 488-conjugated AffiniPure Goat Anti-Rabbit IgG(H+L).



Western Blotting

Image 2. Western Blot Positive WB detected in: HeLa whole cell lysate, MCF-7 whole cell lysate, L02 whole cell lysate, U87 whole cell lysate, HepG2 whole cell lysate. All lanes: ZFYVE9 antibody at 1:1000. Secondary Goat polyclonal to rabbit IgG at 1/50000 dilution. Predicted band size: 157, 151, 84 kDa. Observed band size: 157 kDa.