



Datasheet for ABIN7176539

anti-Zinc Finger Protein 816A (ZNF816A) (AA 1-200) antibody



[Go to Product page](#)

3 Images

Overview

| | |
|----------------------|--|
| Quantity: | 100 µg |
| Target: | Zinc Finger Protein 816A (ZNF816A) |
| Binding Specificity: | AA 1-200 |
| Reactivity: | Human |
| Host: | Rabbit |
| Clonality: | Polyclonal |
| Conjugate: | Un-conjugated |
| Application: | ELISA, Immunohistochemistry (IHC), Immunofluorescence (IF) |

Product Details

| | |
|-------------------|---|
| Immunogen: | Recombinant Human Zinc finger protein 816 protein (1-200AA) |
| Isotype: | IgG |
| Cross-Reactivity: | Human |
| Purification: | >95%, Protein G purified |

Target Details

| | |
|-------------------|--|
| Target: | Zinc Finger Protein 816A (ZNF816A) |
| Alternative Name: | ZNF816 (ZNF816A Products) |
| Background: | Background: May be involved in transcriptional regulation. Aliases: ZNF816 antibody, ZNF816A antibody, Zinc finger protein 816 antibody |

Target Details

UniProt: [Q0VGE8](#)

Application Details

Application Notes: Recommended dilution: IHC:1:20-1:200, IF:1:50-1:200,

Restrictions: For Research Use only

Handling

Format: Liquid

Buffer: Preservative: 0.03 % Proclin 300
Constituents: 50 % Glycerol, 0.01M PBS, pH 7.4

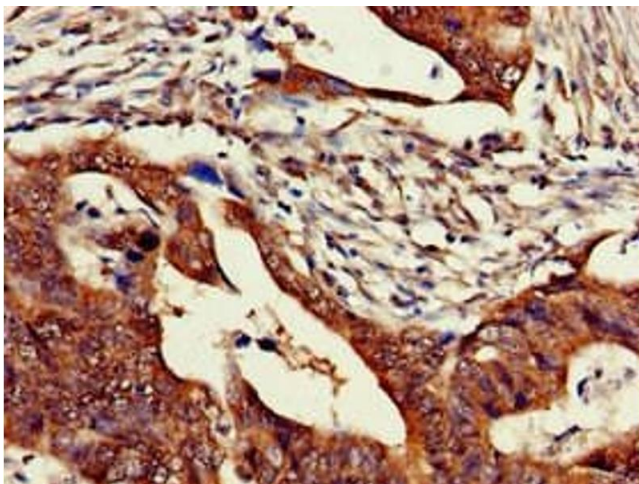
Preservative: ProClin

Precaution of Use: This product contains ProClin: a POISONOUS AND HAZARDOUS SUBSTANCE which should be handled by trained staff only.

Storage: -20 °C,-80 °C

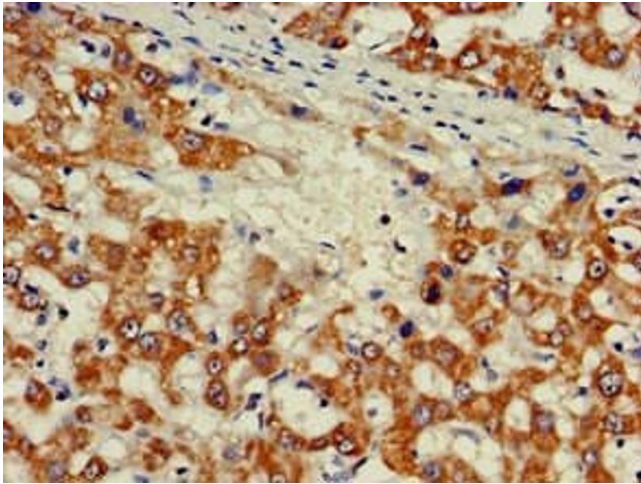
Storage Comment: Upon receipt, store at -20°C or -80°C. Avoid repeated freeze.

Images



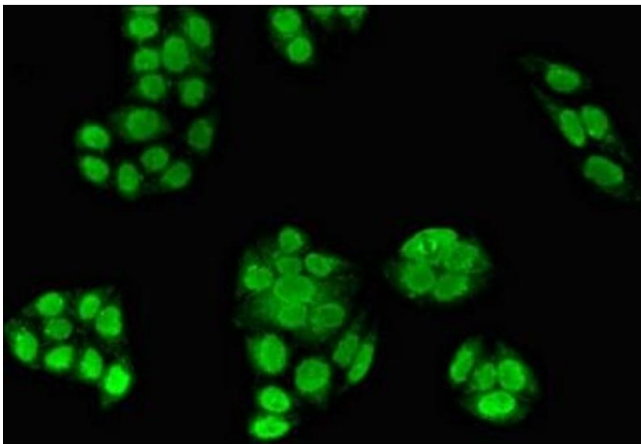
Immunohistochemistry

Image 1. Immunohistochemistry of paraffin-embedded human colon cancer using ABIN7176539 at dilution of 1:100



Immunohistochemistry

Image 2. Immunohistochemistry of paraffin-embedded human liver cancer using ABIN7176539 at dilution of 1:100



Immunofluorescence

Image 3. Immunofluorescent analysis of PC-3 cells using ABIN7176539 at dilution of 1:100 and Alexa Fluor 488-conjugated AffiniPure Goat Anti-Rabbit IgG(H+L)